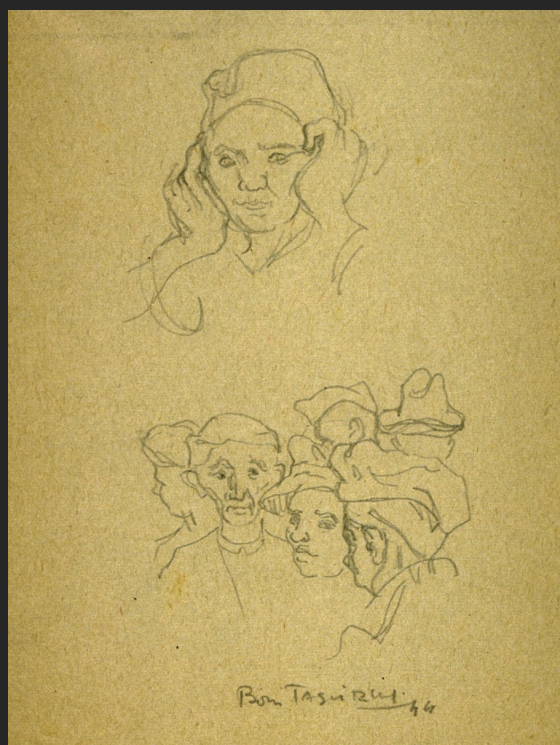


Boris TASLITZKY

Gallery

War drawings, 1944 – 1945

Buchenwald Camp 3





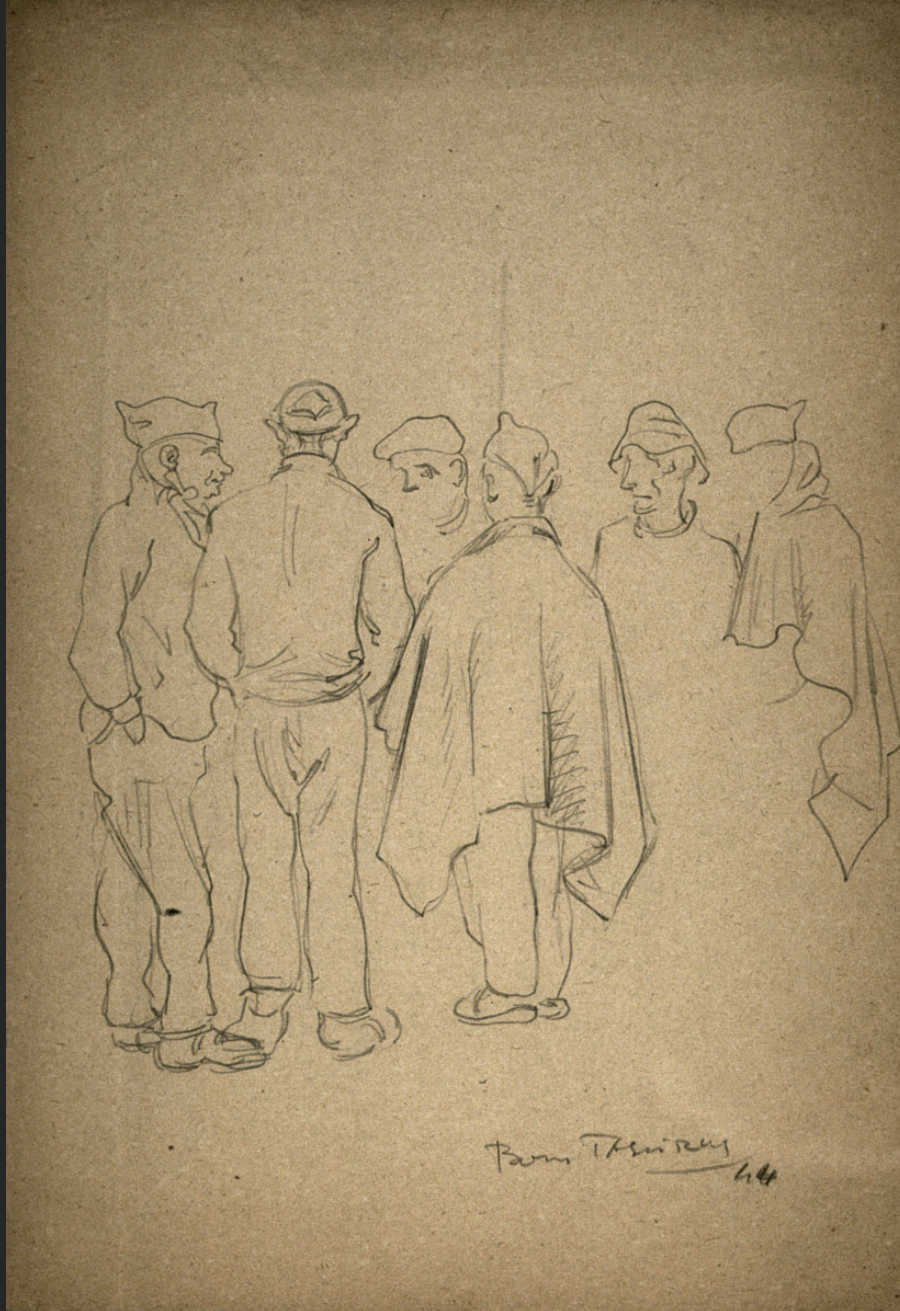
WORKING WHILE THE SS OFFICER IS LOOKING THE OTHER WAY, Buchenwald concentration camp, 1944, pencil on paper



DURING THE HALF-HOUR BREAK, A BIT OF COOKING, Buchenwald concentration camp, 1944, pencil on paper, 6,9 x 5,2 in



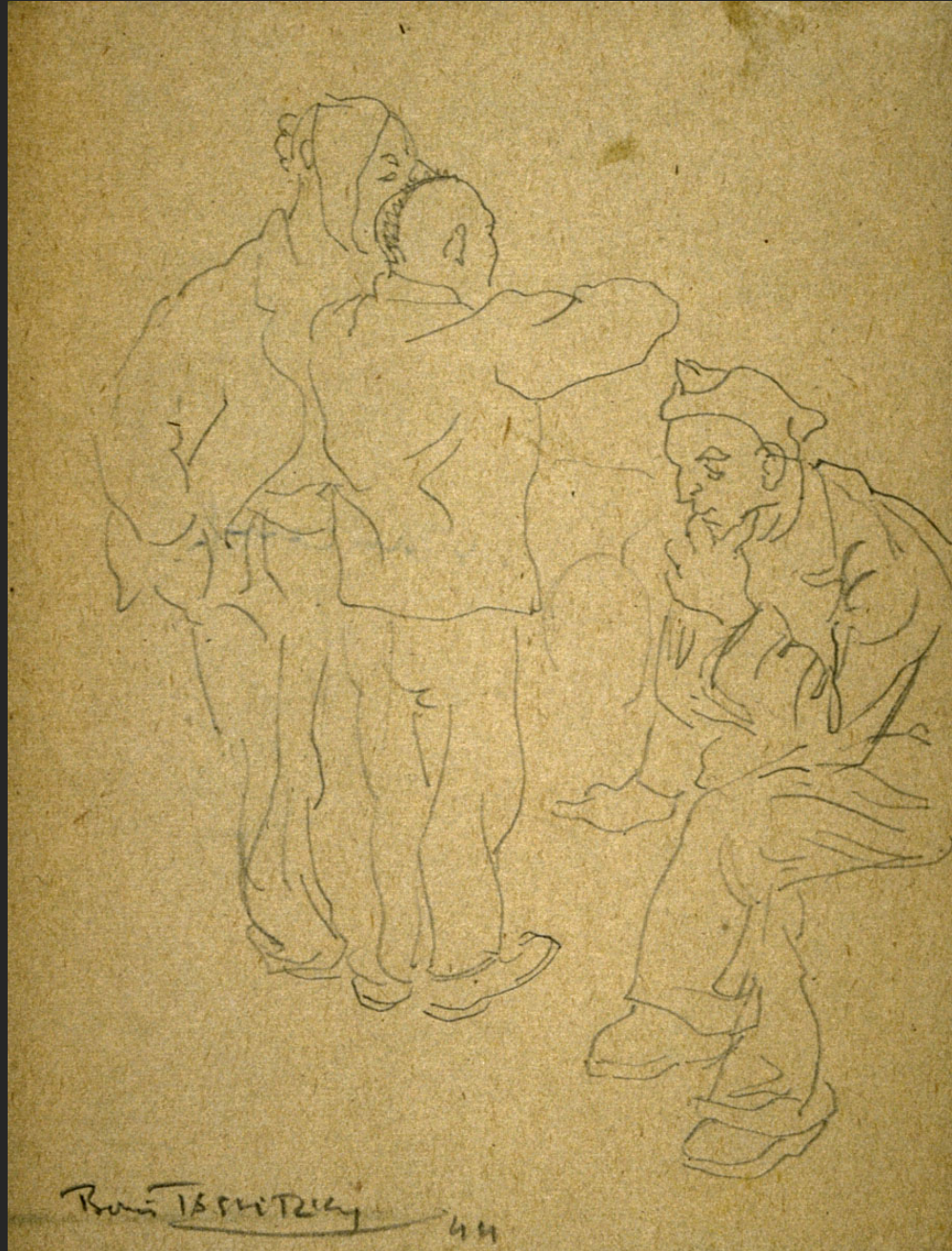
HALF-HOUR REST, Buchenwald concentration camp, 1944, pencil on paper



GROUP OF DEPORTED, Buchenwald concentration camp, 1944, pencil on paper, 8,1 x 5,7 in



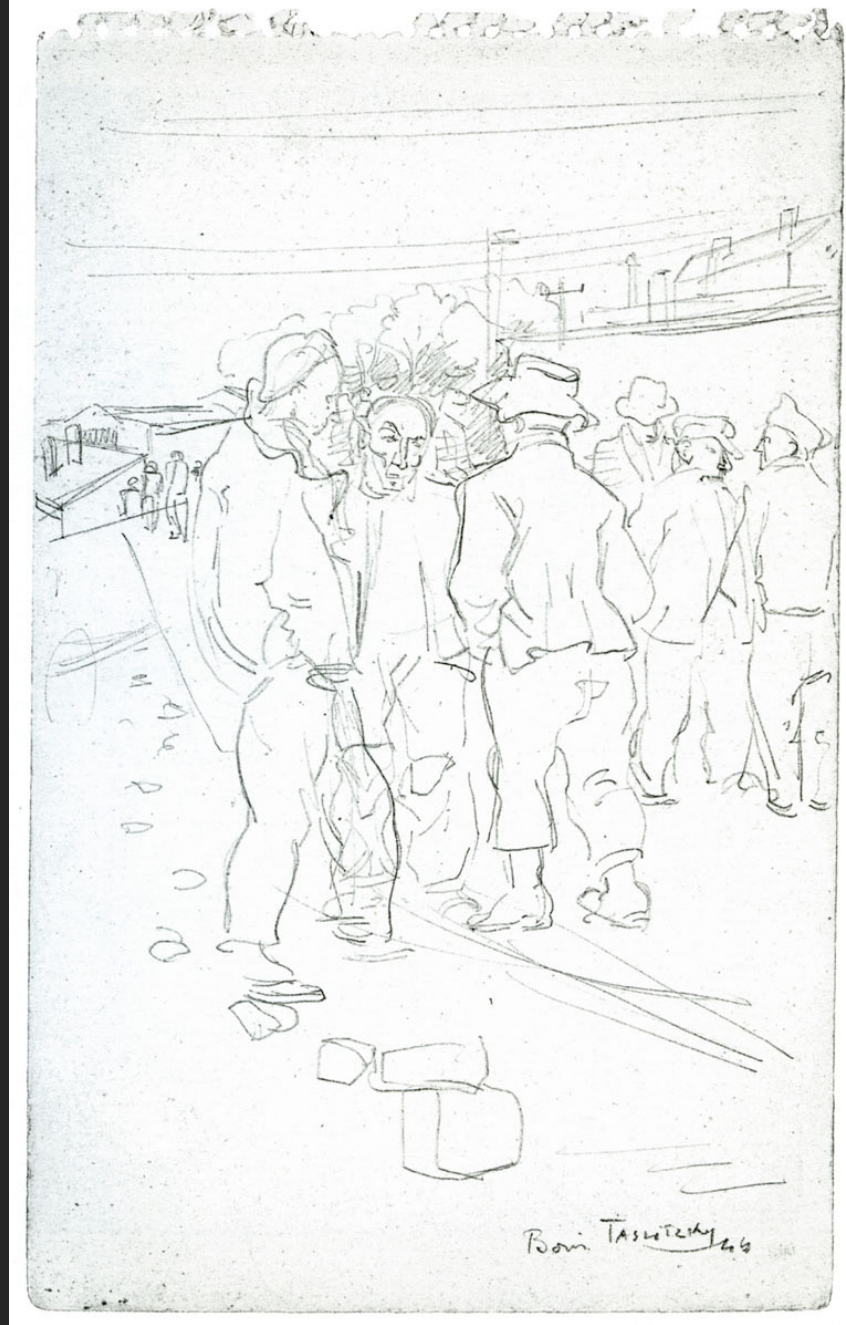
A GROUP, Buchenwald concentration camp, 1944, pencil on paper, 5,4 x 5,7 in



SILHOUETTES, Buchenwald concentration camp, 1944, pencil on paper, 5,2 x 4 in



THOSE OF THE «QUARANTINE» LOITERING AROUND THE CONSTRUCTION SITE IN SEARCH FOR DRY WOOD, Buchenwald concentration camp, 1944, pencil on paper



UNTITLED, Buchenwald concentration camp, 1944, pencil on paper



SKETCH, Buchenwald concentration camp, 1944, pencil on paper, 8,3 x 5 in



Bon. TASHIRU
44

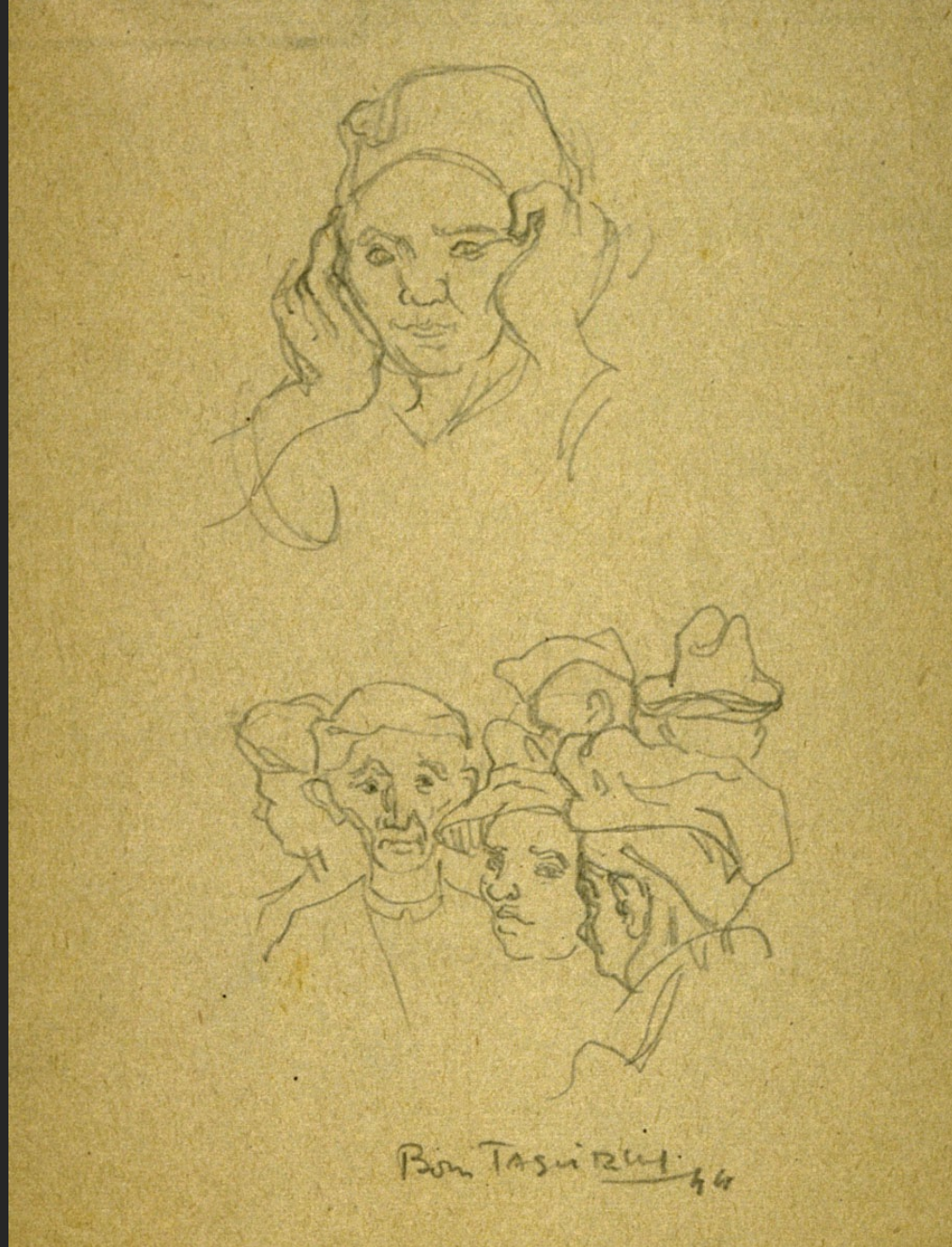
TWO SKETCHES, Buchenwald concentration camp, 1944, pencil on paper, 5,1 x 8,3 in



SKETCH, Buchenwald concentration camp, 1944, pencil on paper, 5 x 4 in



SILHOUETTE, Buchenwald concentration camp, 1944, pencil on paper, 5 x 3,7 in



SILHOUETTES, Buchenwald concentration camp, 1944, pencil on paper, 5,2 x 4 in



WAITING FOR THE DISTRIBUTION OF SHOVELS AND PICKAXES, Buchenwald concentration camp, 1944, pencil on paper



A BIT OF FIRE, Buchenwald concentration camp, 1944, pencil on paper



RESTING AT THE CONSTRUCTION SITE, Buchenwald concentration camp, 1944, pencil on paper, 6,9 x 4,8 in



MEAL DURING THE HALF-HOUR REST, Buchenwald concentration camp, 1944, pencil on paper



MEAL DURING THE HALF-HOUR REST, Buchenwald concentration camp, 1944, pencil on paper



MEAL DURING THE HALF-HOUR REST, Buchenwald concentration camp, 1944, pencil on paper



AFTER THE KOMMANDO'S ROLL CALL, WAITING FOR THE HOUR OF RETURN TO THE CAMP, Buchenwald concentration camp, 1944, pencil on paper



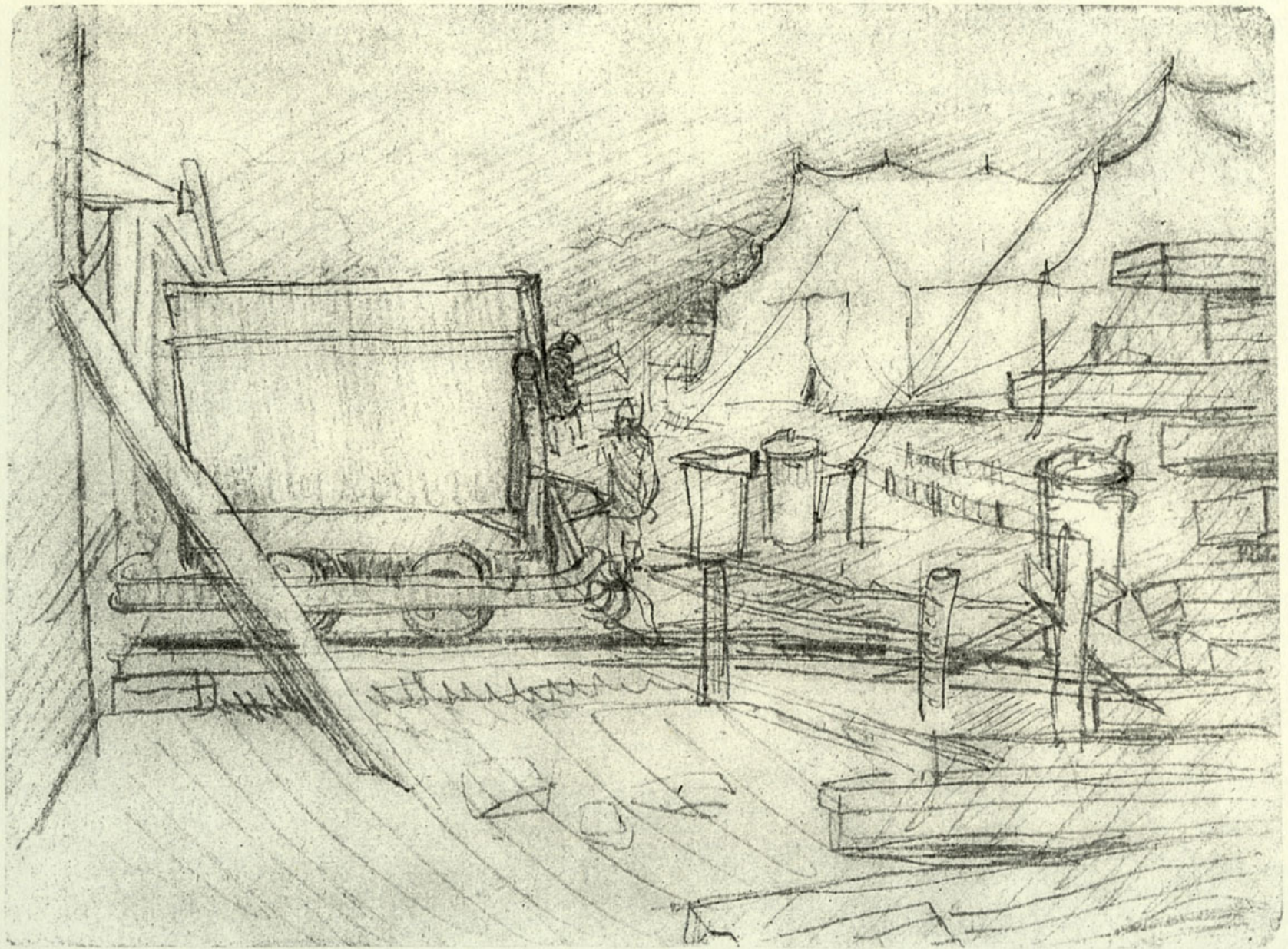
IN THE WAGON, RETURN FROM WORKFARE IN WEIMAR, Buchenwald concentration camp, 1944, pencil on paper, 5,6 x 8,3 in



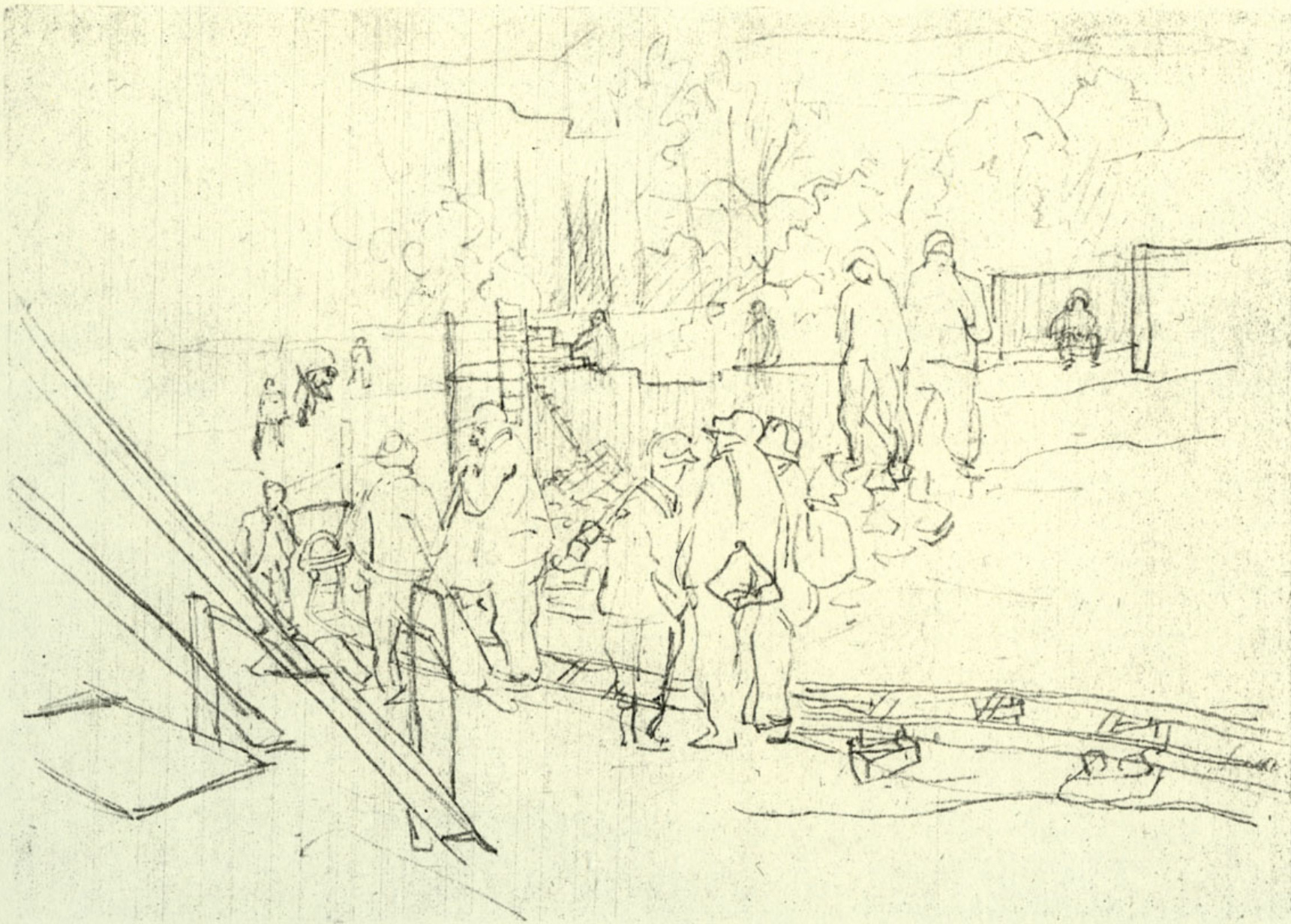
DURING AN ALERT ON A CONSTRUCTION SITE OF WEIMAR, Buchenwald concentration camp, 1944, pencil on paper, 5,6 x 8,3 in



DURING AN ALERT ON A CONSTRUCTION SITE OF WEIMAR, Buchenwald concentration camp, 1944, pencil on paper, 5,7 x 8,3 in



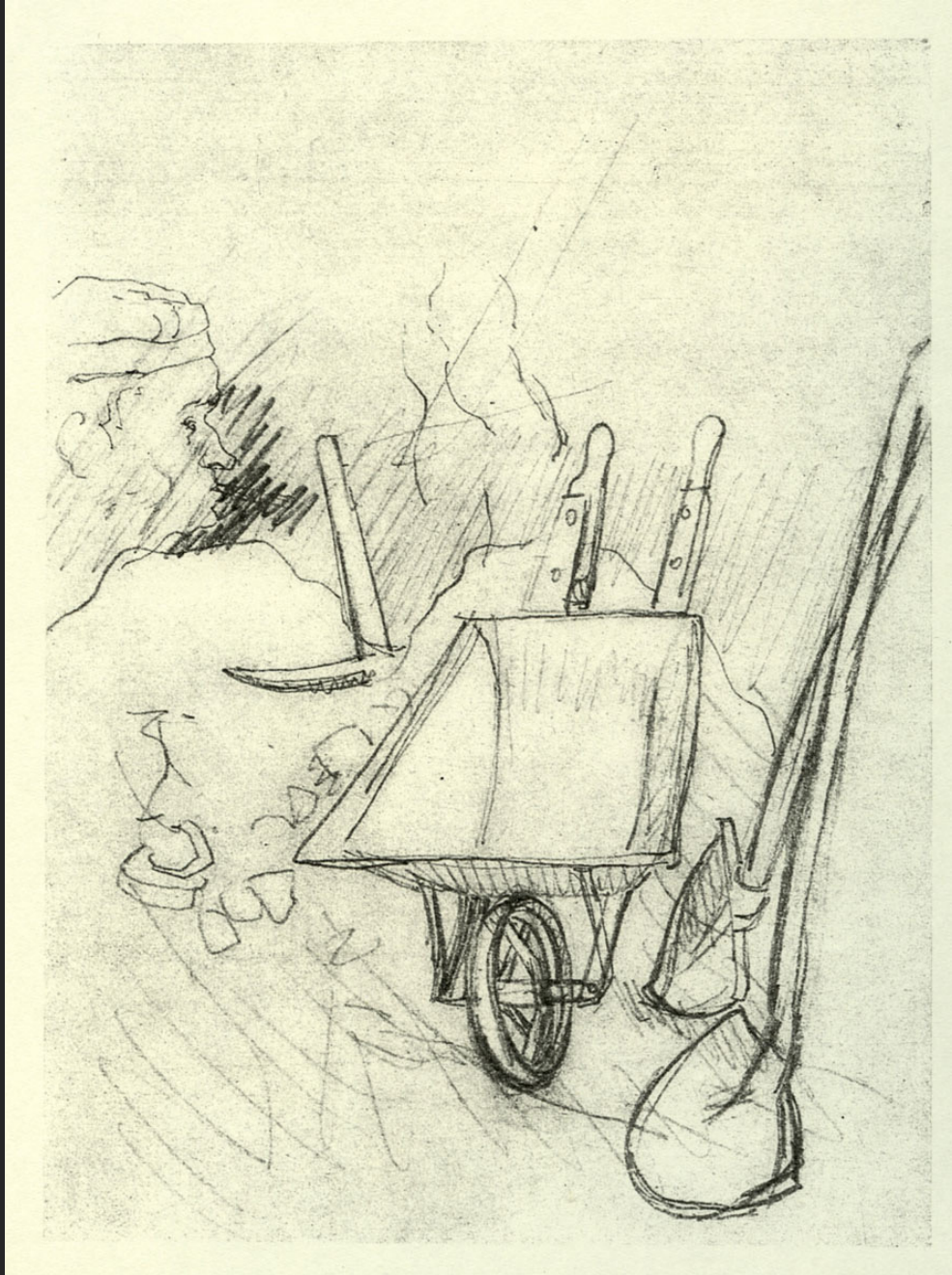
CONSTRUCTION SITE IN THE LITTLE CAMP, CLOSE TO THE TENTS, Buchenwald concentration camp, 1945, pencil on paper, 5,2 x 7 in



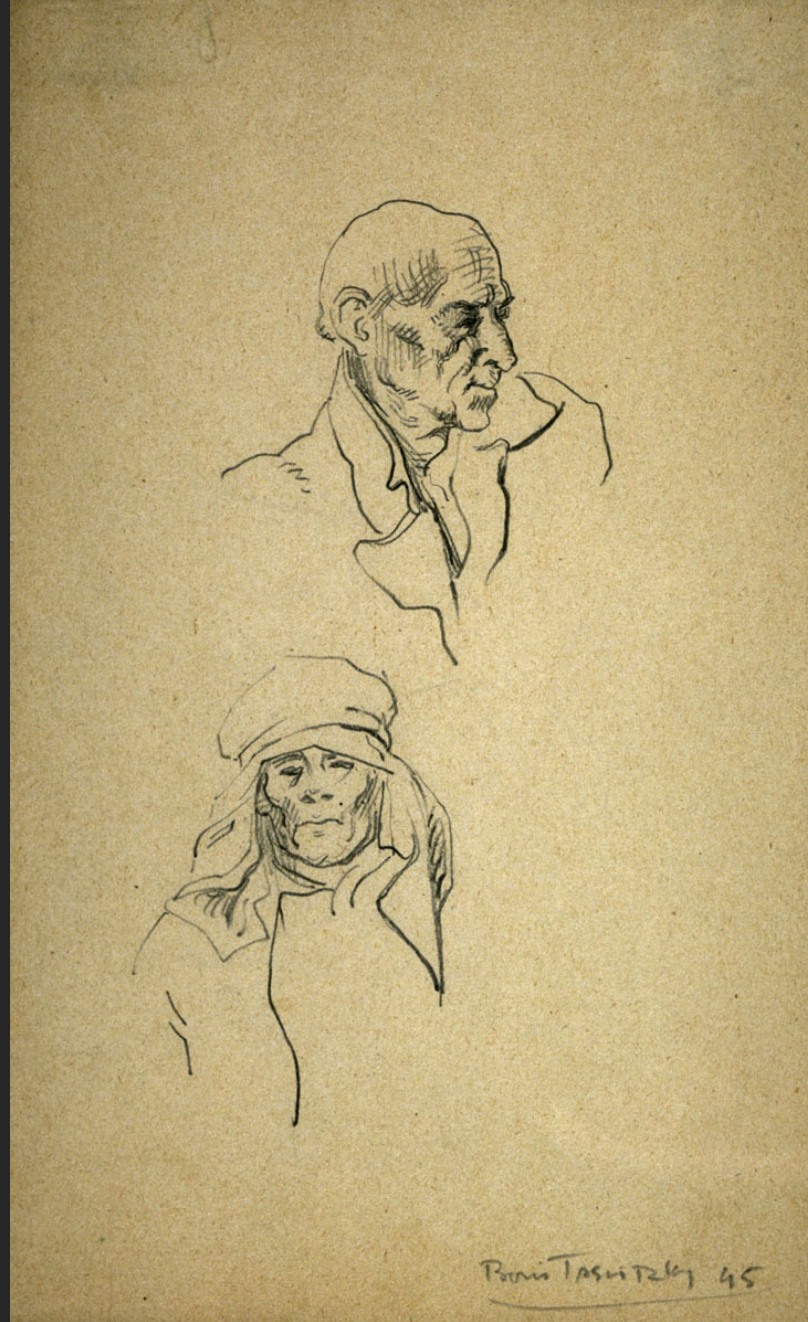
CONSTRUCTION SITE IN THE LITTLE CAMP, THE BUILDING OF NEW UNIT BLOCKS, Buchenwald concentration camp, 1944, pencil on paper



CONSTRUCTION SITE IN THE LITTLE CAMP, IN FRONT OF A WATCHTOWER, Buchenwald concentration camp, 1944, pencil on paper



OUR TOOLS, Buchenwald concentration camp, 1945, pencil on paper, 2,4 x 5 in



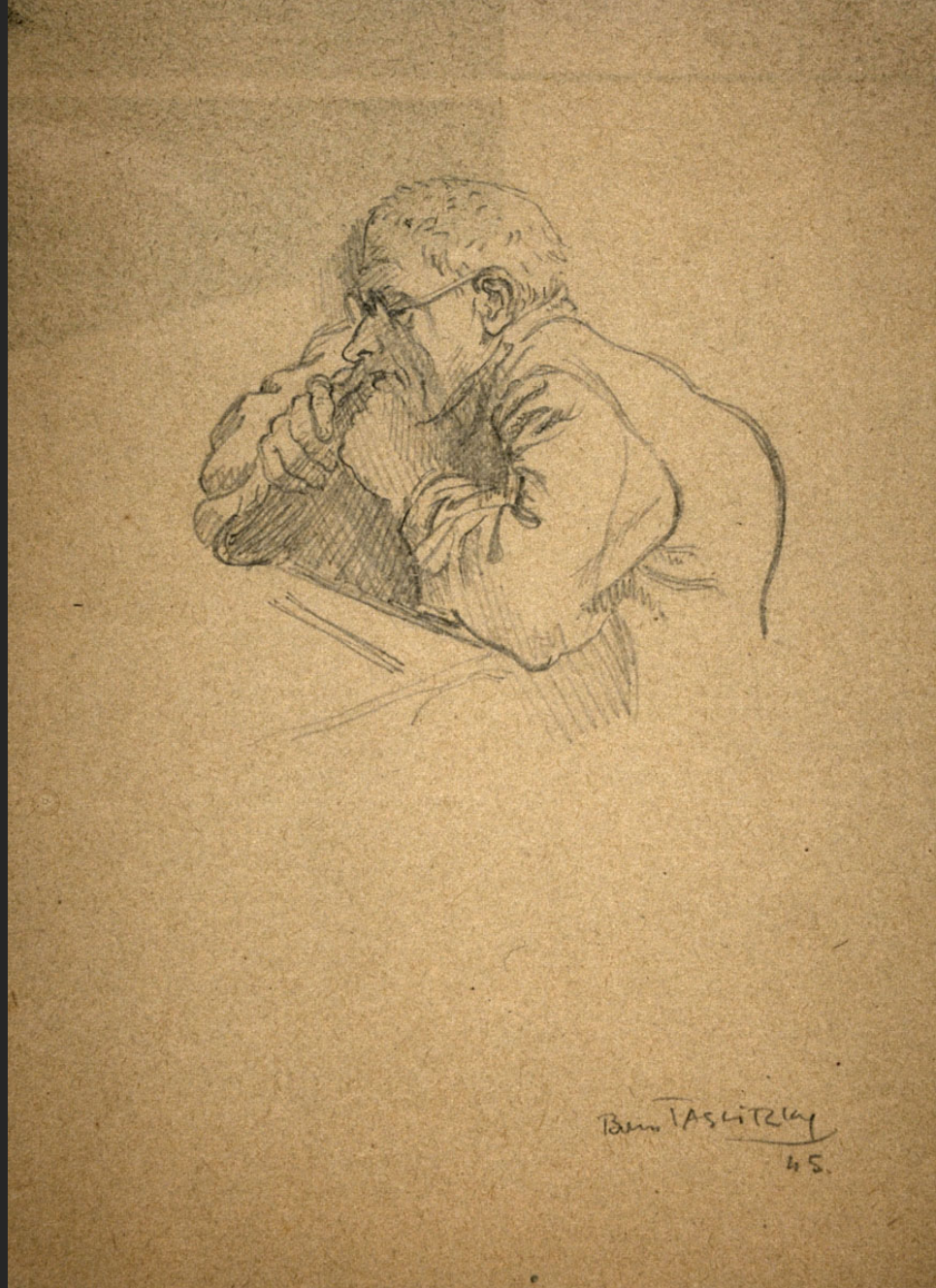
PORTRAITS OF FRENCH MEN, Buchenwald concentration camp, 1945, pencil on paper, 8,2 x 5,1 in



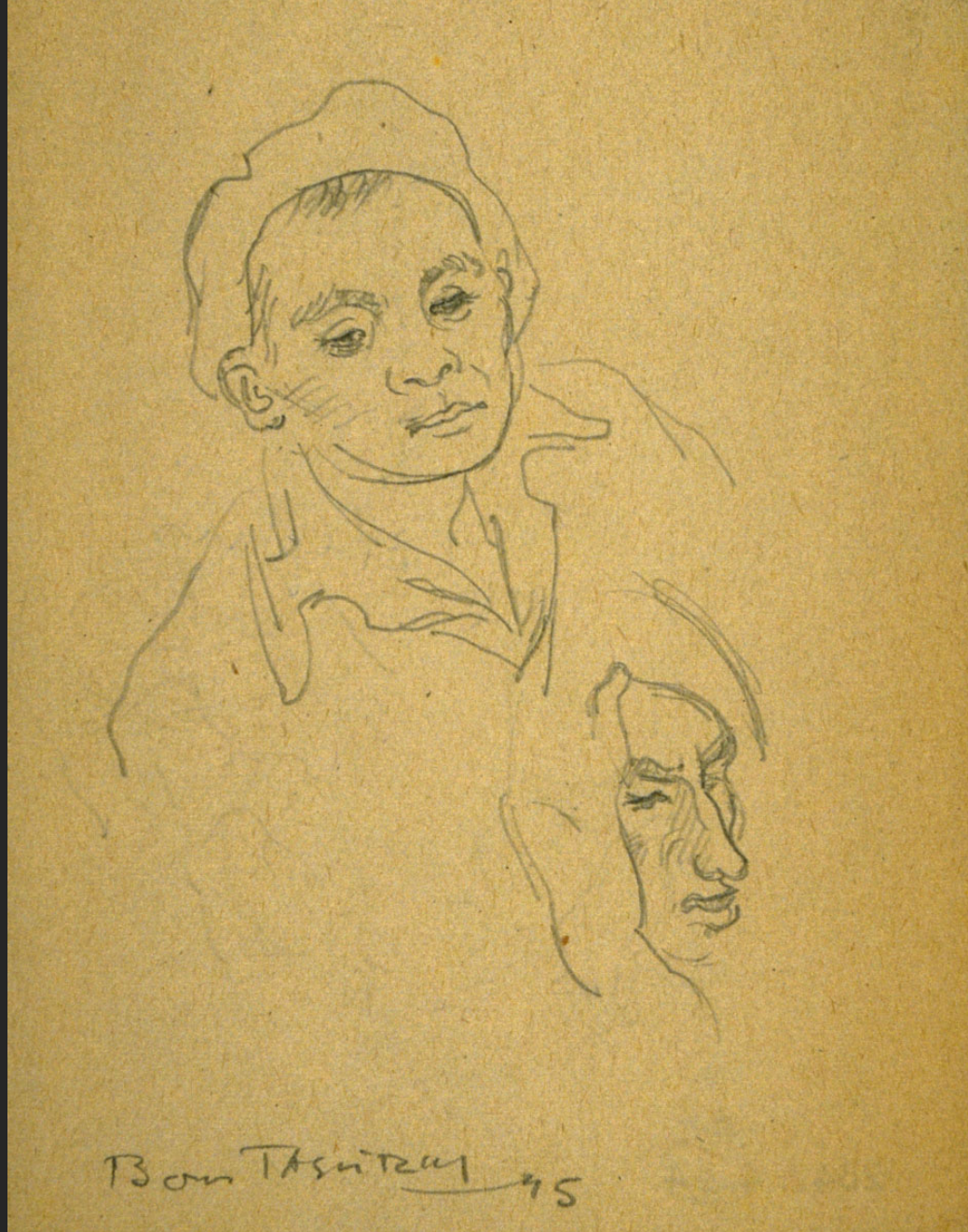
SILHOUETTE OF FRENCH MEN, Buchenwald concentration camp, 1945, pencil on paper, 6,9 x 5,2 in



A FRENCH MAN, Buchenwald concentration camp, 1945, pencil on paper, 8,3 x 5,2 in



A HUNCHBACKED SPANIARD, Buchenwald concentration camp, 1945, pencil on paper, 7 x 5,1 in



Bon Tashitzky 45

TWO FACES OF FRENCH MEN, Buchenwald concentration camp, 1945, pencil on paper, 5,2 x 4 in



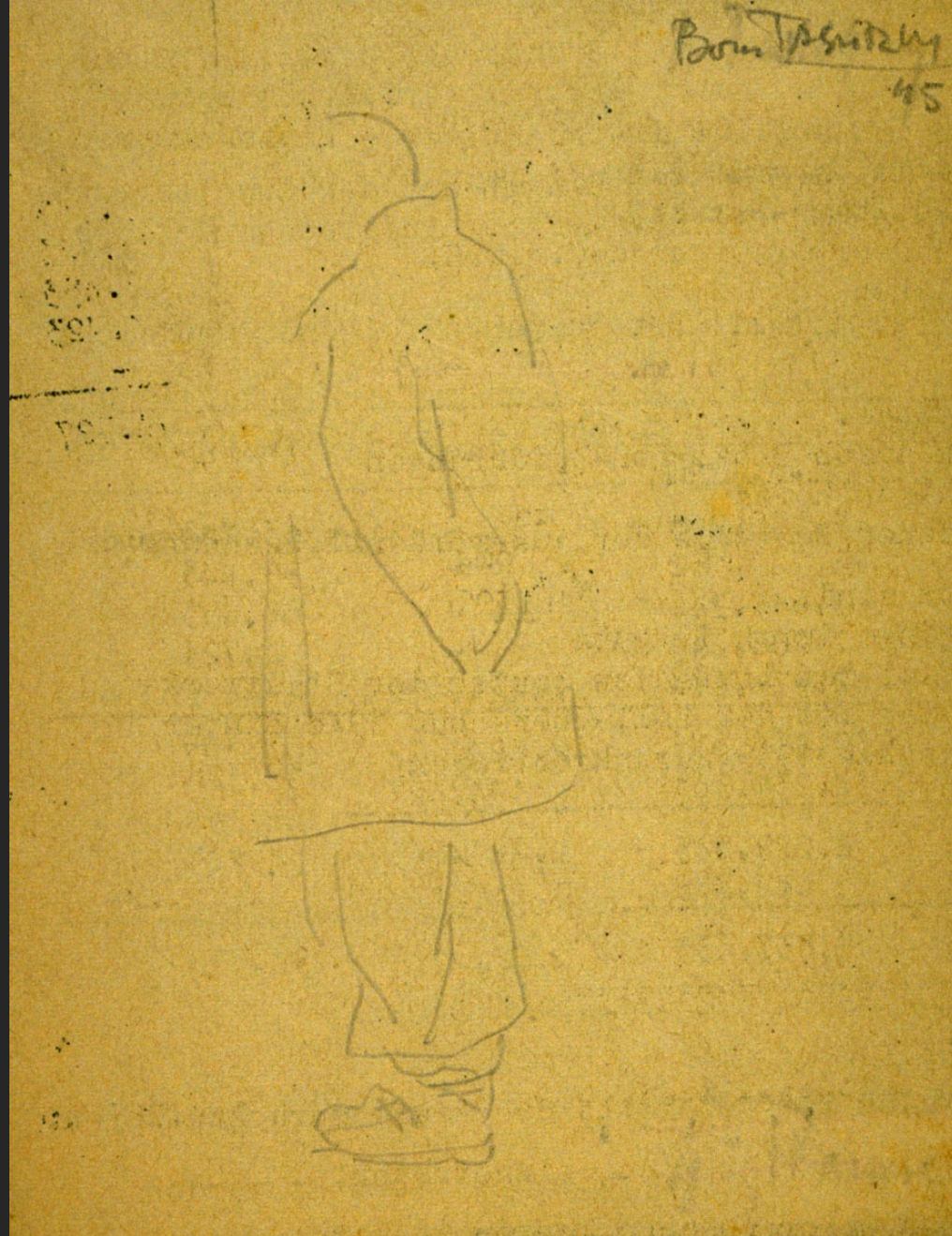
PORTRAITS, Buchenwald concentration camp, 1945, pencil on paper, 4 x 5 in



SILHOUETTES, Buchenwald concentration camp, 1945, pencil on paper, 5,7 x 9,2 in



PORTRAITS, Buchenwald concentration camp, 1945, pencil on paper, 2,6 x 4,9 in



SILHOUETTE, Buchenwald concentration camp, 1945, pencil on paper, 5,2 x 4 in



SILHOUETTE, Buchenwald concentration camp, 1945, pencil on paper, 5,5 x 4,1 in

13



AFTER THE SOUP, Buchenwald concentration camp, 1945, pencil on paper, 4,2 x 5,4 in



AFTER THE SOUP, Buchenwald concentration camp, 1945, pencil on paper, 5,4 x 8,2 in



THE SOUP, Buchenwald concentration camp, 1945, pencil on paper, 6,9 x 4,8 in



CONVERSATION, Buchenwald concentration camp, 1945, pencil on paper, 7 x 4,8 in



THE CARTS RAIL, Buchenwald concentration camp, 1945, pencil on paper



FOUNDATIONS FOR THE NEW COMMANDER'S HOUSE, AFTER THE BOMBINGS OF THE 24TH AUGUST 1944, Buchenwald concentration camp, 1944, pencil on paper



PORTRAIT OF ÉMILE CHEVALLIER, Buchenwald concentration camp, 1945, pencil on paper, 8,3 x 5 in



ÉMILE CHEVALLIER, Buchenwald concentration camp, 1945, pencil on paper, 5,3 x 4,1 in



PORTRAIT, Camp de Buchenwald, 1945, pencil on paper, 10,5 x 7,3 cm



Boon Tassiray

45.

A BOY WHO PROTECTS HIMSELF FROM COLD, Buchenwald concentration camp, 1945, pencil on paper, 4 x 2,9 in



TWO CHARACTERS, Buchenwald concentration camp, 1945, pencil on paper, 6,9 x 5,1 in



PORTRAITS, Buchenwald concentration camp, 1945, pencil on paper, 5,3 x 4,2 in



FACES, Buchenwald concentration camp, 1945, pencil on paper, 5,1 x 4 in