

*Boris TASLITZKY*

# Gallery

## Landscapes drawings

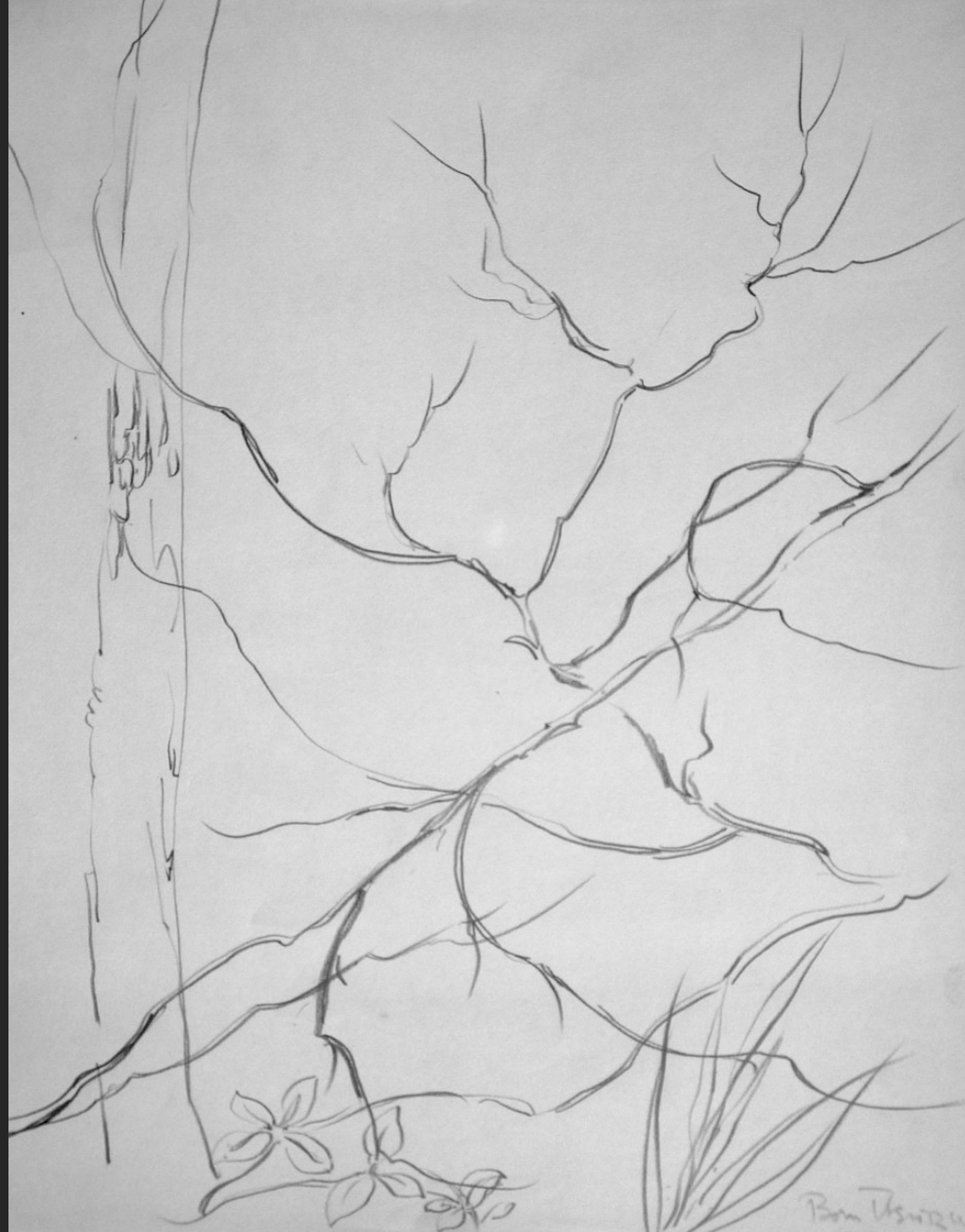




TREES, undated, ink on cardboard, 19,7 x 25,6 in



TREE TRUNK, undated, pencil, 13 x 10,2 in



BRANCH, undated, pencil, 13 x 10,2 in





THE TREE BY THE RIVER, undated, unsigned, ink, 15 x 18,3 in

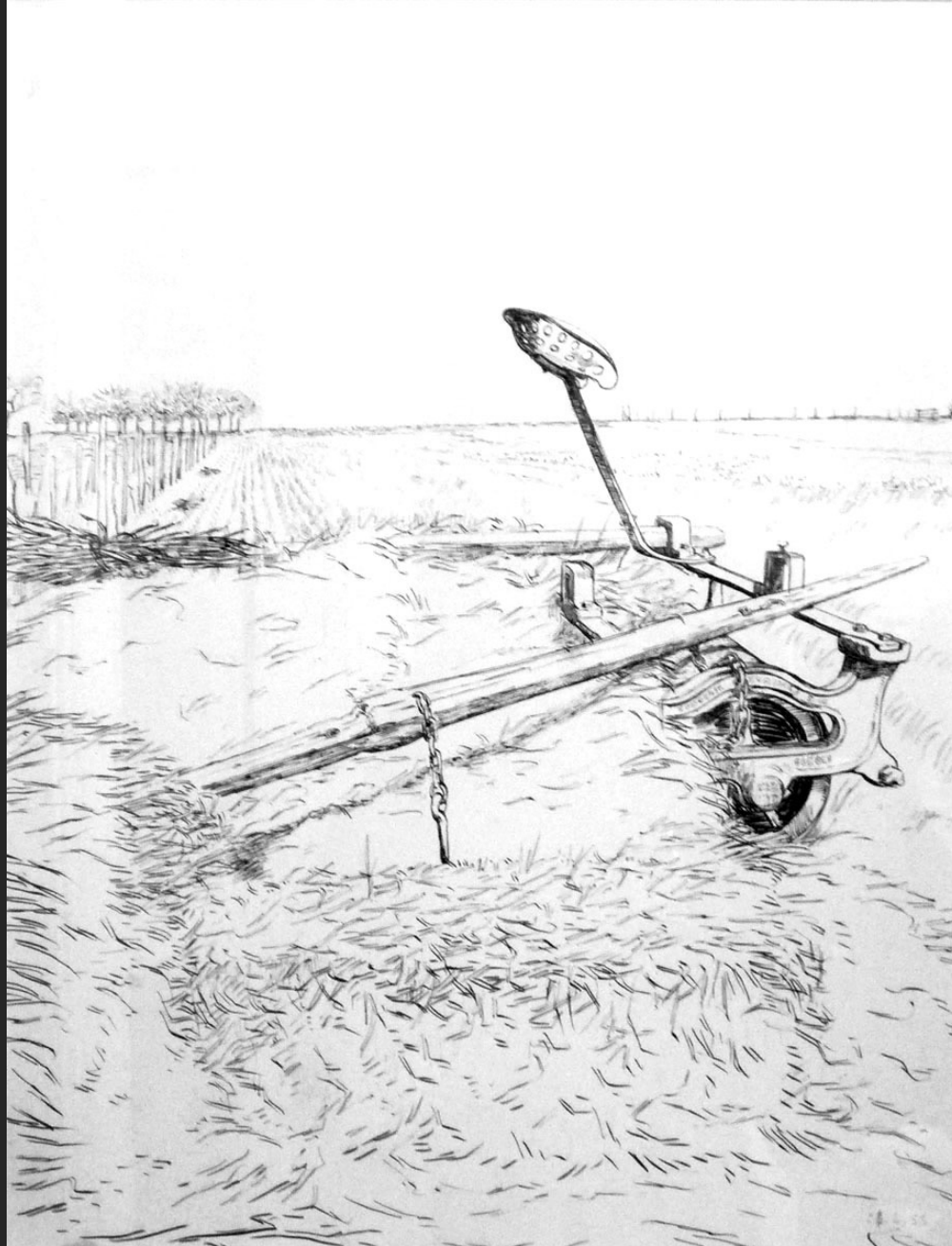


BOATS ON LAND, 1947, ink, 18,7 x 25 in





MAHIEDDINE CITY IN ALGIERS, 1952, pencil, 19,3 x 25,6 in

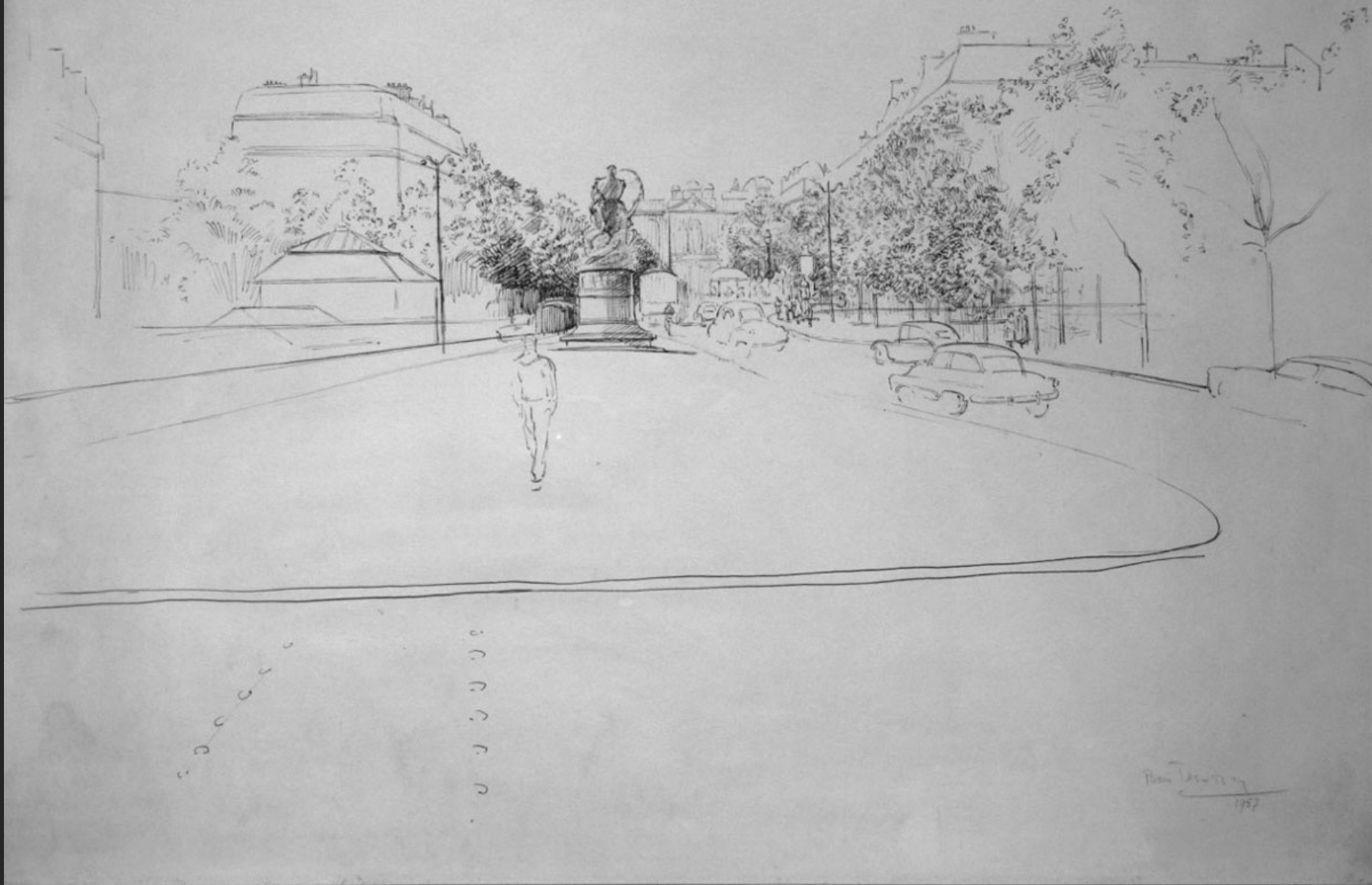


THE PLOUGH, 24th April 1955, ink, 23,8 x 18,1 in



FISHING PORT, 5th July 1956, ink, 19,7 x 25,6 in



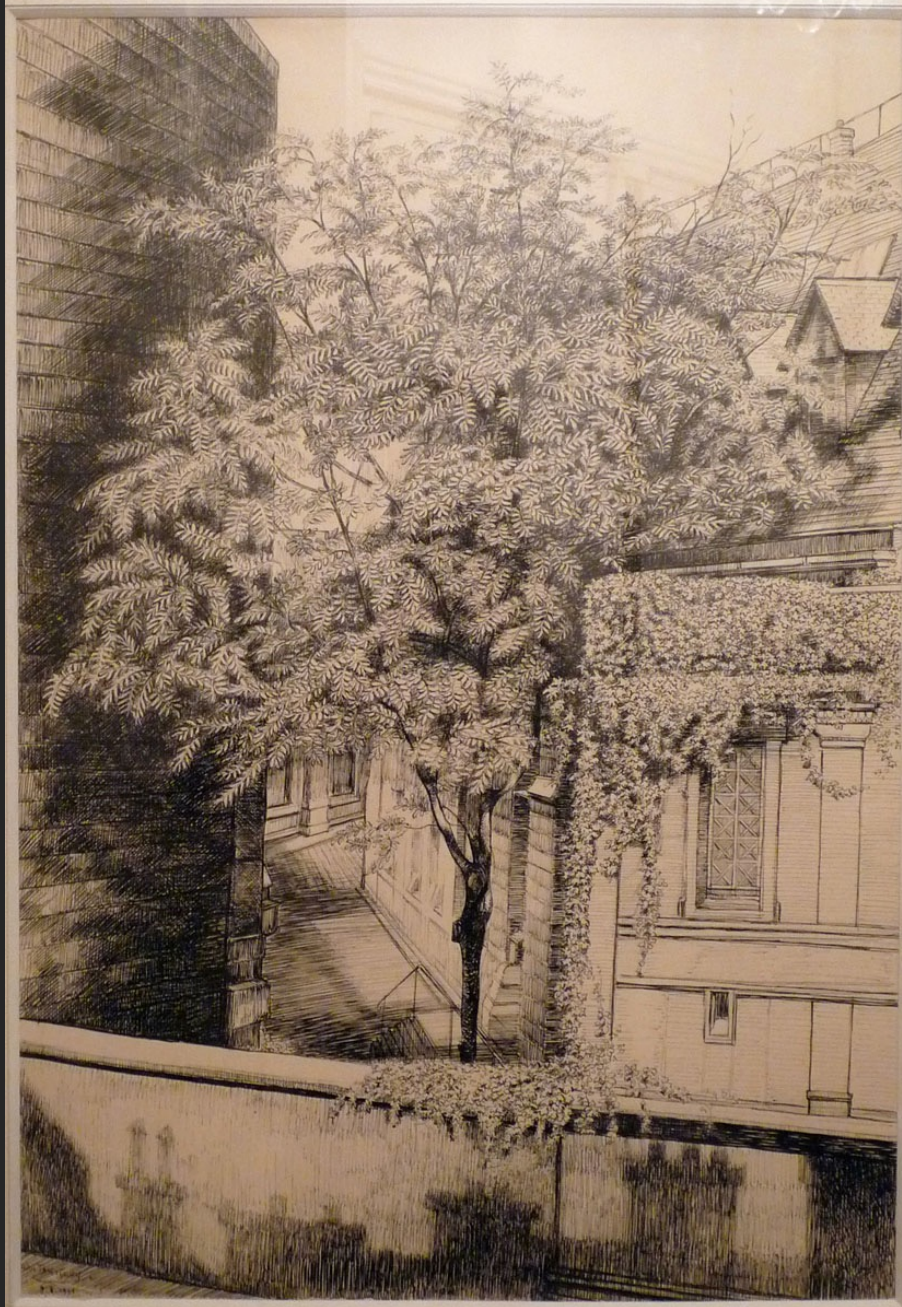


OBSERVATORY PLAZA, 1957, ink on paper, 18,9 x 24,8 in



PINE BY THE SEA, 1960, ink on paper and watercolor, 19,7 x 26 in





THE TREE IN RUE RACINE, 2nd July 1961, ink, 29,1 x 19,7 in



TAMARIS, 21th July 1961, ink, 19,7 x 26 in





ORNANS, HOUSES BY THE RIVER, 26th July 1962, wash, 9 x 11,4 in





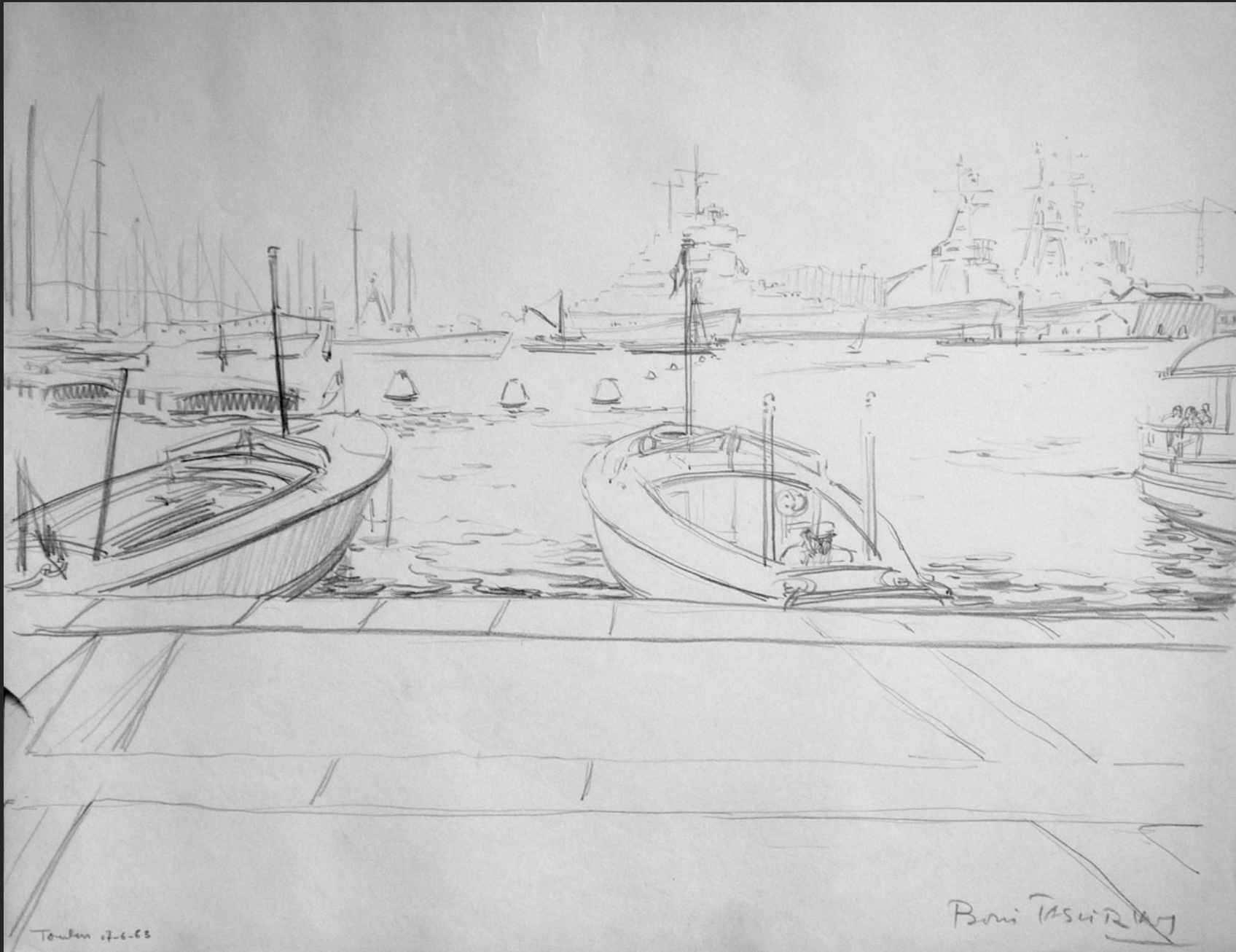
LANDSCAPE, THE HILL, VÉZELAY, 2nd November 1962, pencil, 10,2 x 13 in



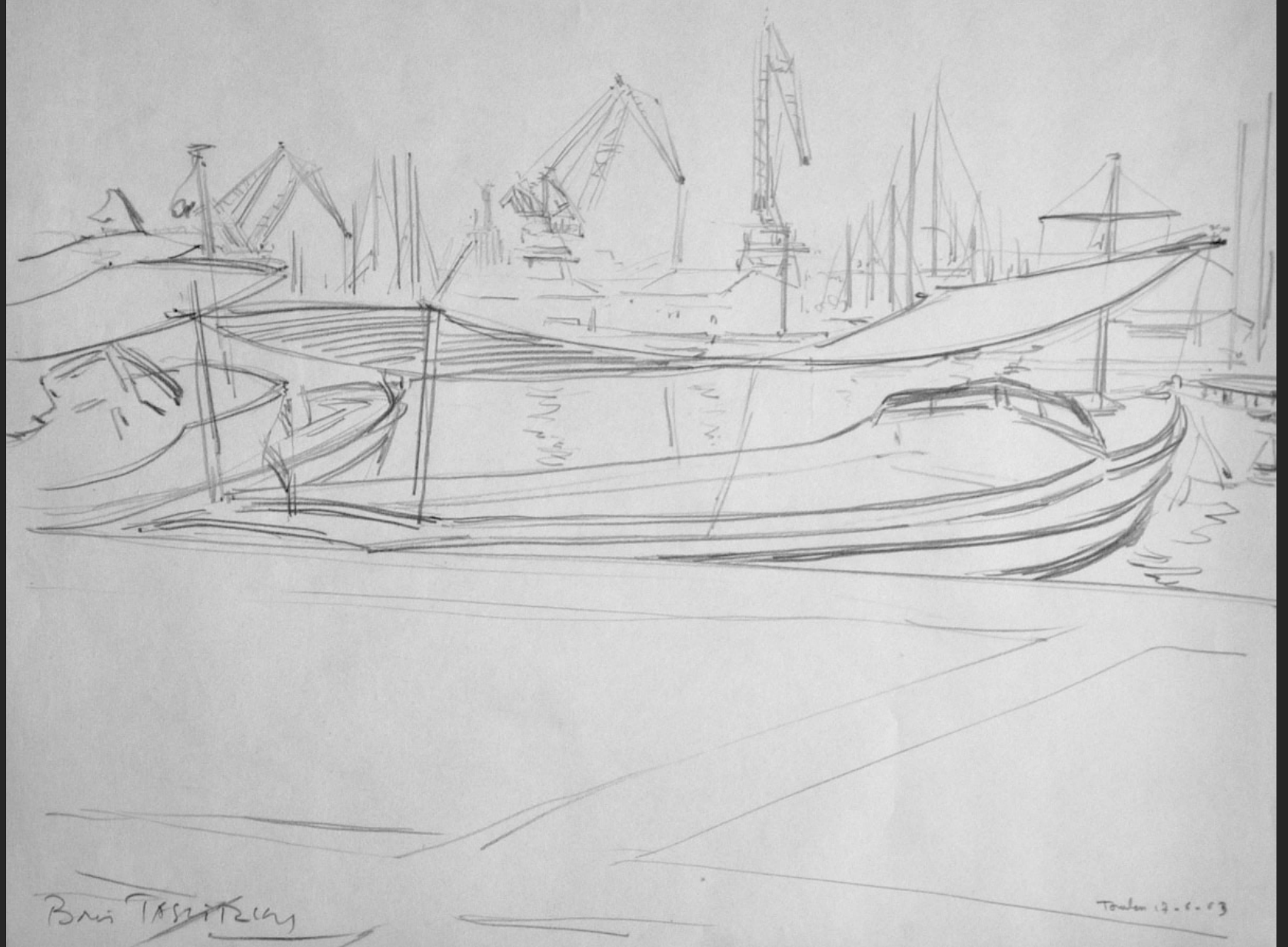
Avalon 3.11.62

Boris Tasui 12/62

LANDSCAPE WITH HORSE, AVALLON, 3rd November 1962, pencil, 10,2 x 13 in



THE PORT OF TOULON I, 17th June 1963, pencil, 10,2 x 13 in



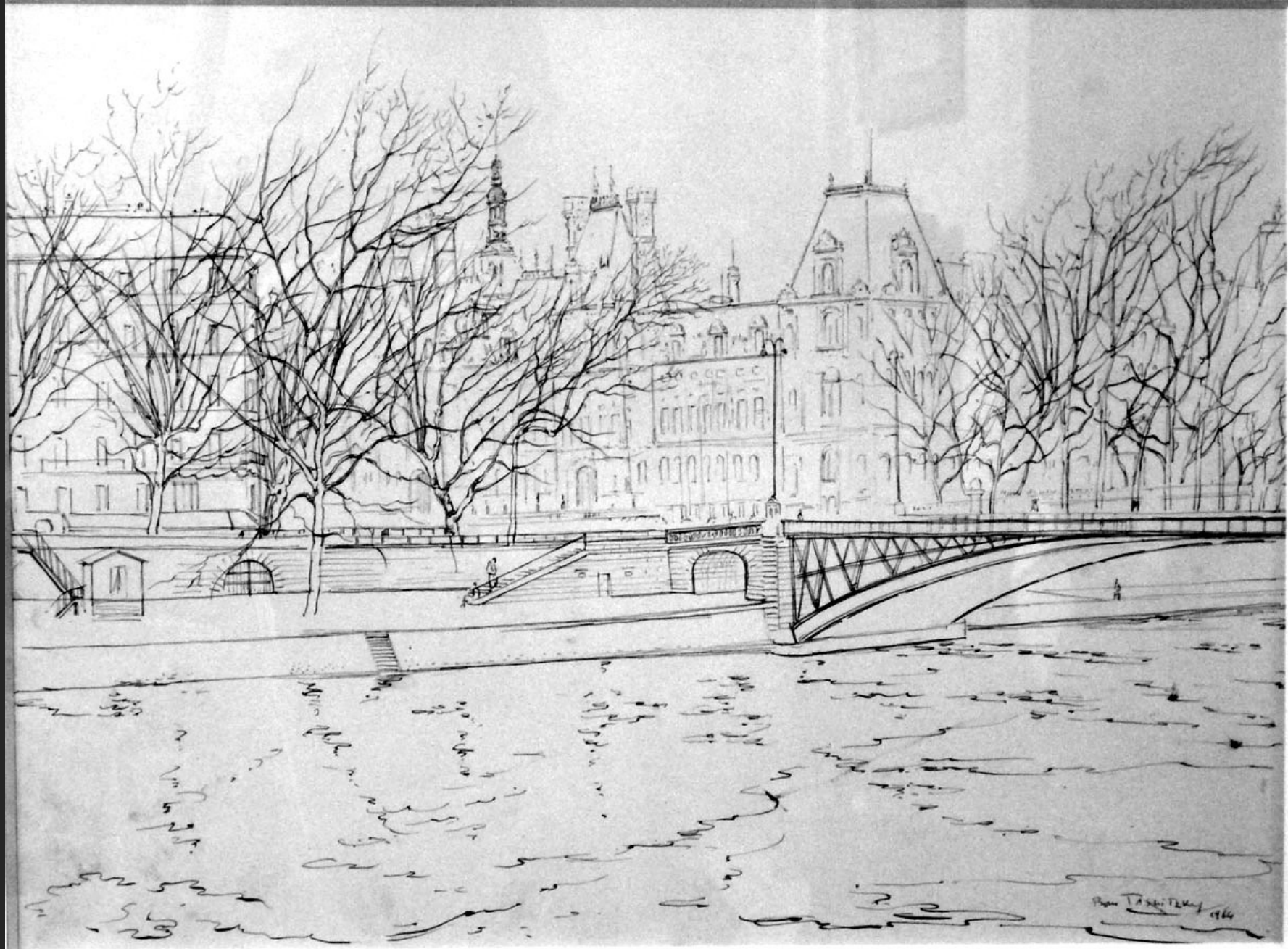
THE PORT OF TOULON II, 17th June 1963, pencil, 10,2 x 13 in





MOORING BOATS, 1963, watercolor, 20 x 26,4 in





LE PONT DES ARTS, 1964, ink, 13,6 x 18,9 in



LANDSCAPE WITH TREES, BANDOL, 15th September 1967, ink on paper, 19,8 x 25,7 in





TREES IN SANARY, 17th September 1967, pencil on paper, 19,7 X 25,6 in



CAP COZ, 25th July 1968, ink, 19,7 x 25,6 in



CAP COZ, 25th July 1968, ink, 19,7 x 25,6 in





TUDY ISLAND, 13th July 1972, ink, 19,7 x 25,6 in





LOCTUDY, BOAT AT THE COAST, 19th July 1972, ink, 19,7 x 25,6 in



LANDSCAPE IN LANGON, 15th August 1972, pencil on paper, 19,7 X 25,6 in





WRECK, 2nd September 1972, ink, 19,7 x 25,6 in





SAINTE MARINE, ROCKS, 22nd July 1973, ink on cardboard, 19,3 x 25,3 in



SAINTE MARINE, THE SMALL CRIB, 27th July 1973, ink on cardboard, 19,5 x 25,6 in





SAINTE MARINE, TREE, 24th July 1974, ink on cardboard, 19,6 x 25,5 in



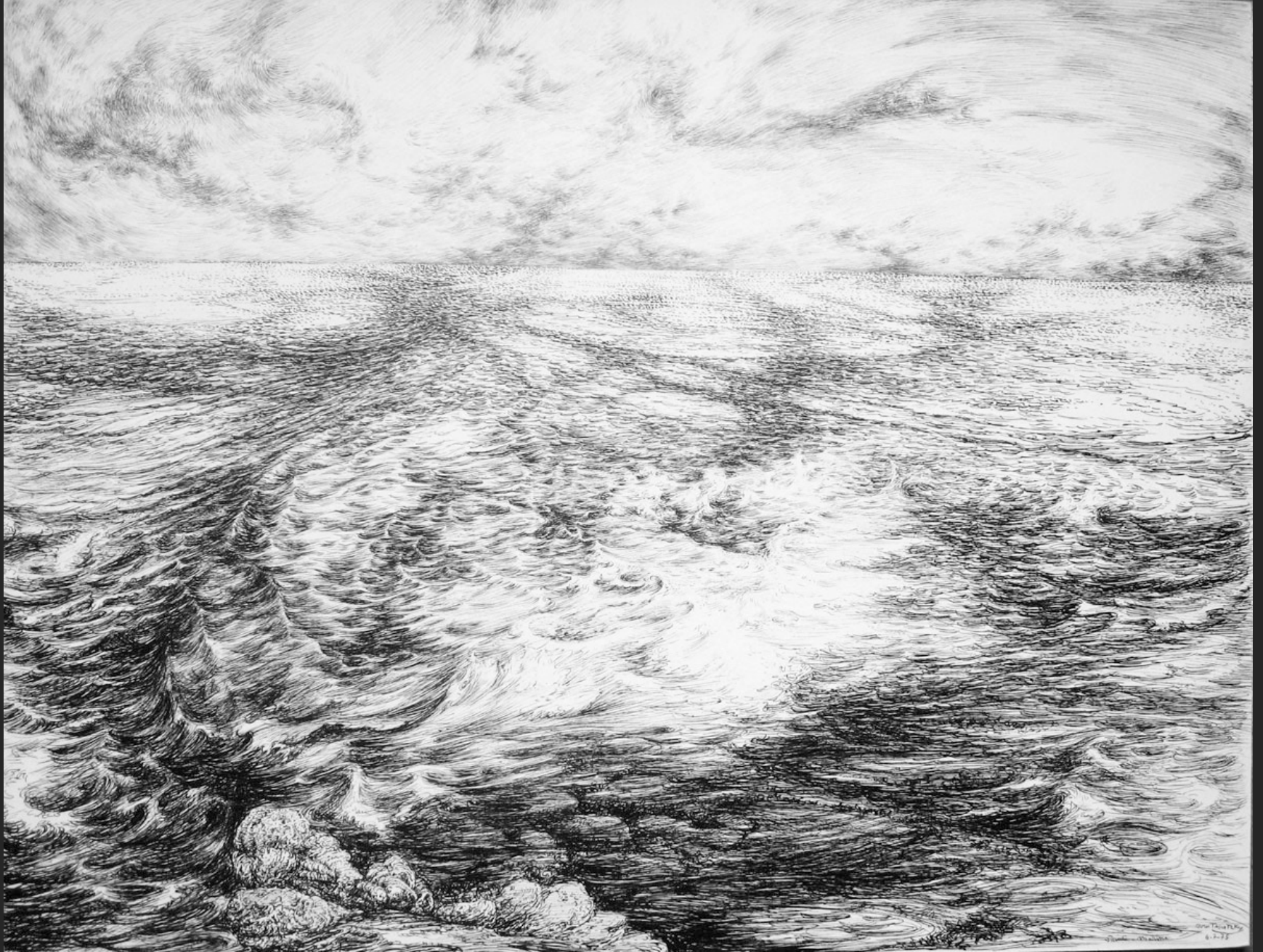
SAINTE MARINE, WAVES, 27th July 1974, ink on cardboard, 19,5 x 25,6 in





APPLE TREE BRANCHES, 7th August 1974, ink, 15,4 x 18,9 in

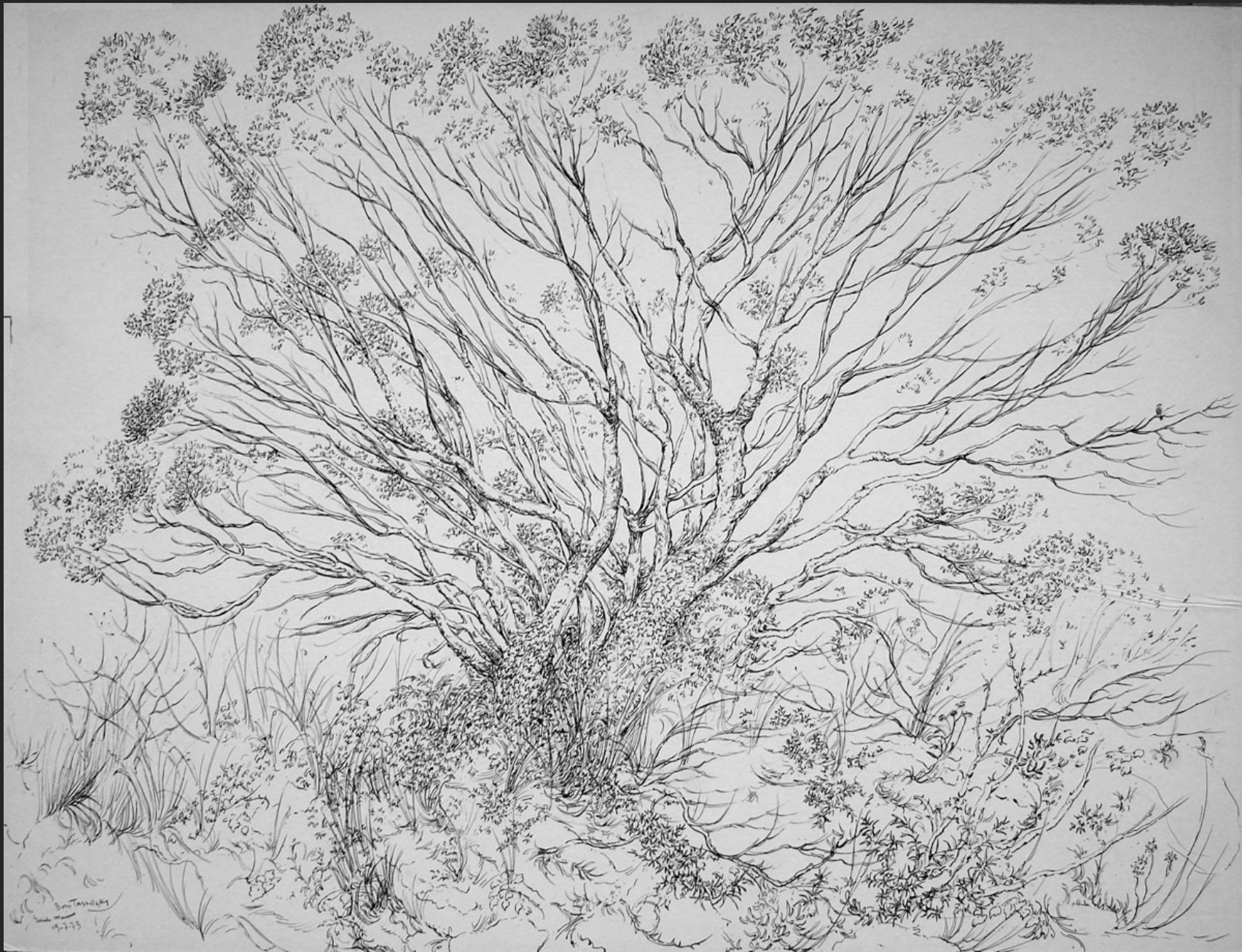




SAINTE MARINE, WAVE, 6th July 1975, ink on cardboard, 19,5 x 25,6 in



SAINTE MARINE, BEACH AND ROCKS, 16th July 1975, ink, 19,5 x 25,6 in



SAINTE MARINE, TREE, 19th July 1975, ink on cardboard, 19,6 x 25,5 in





THE TREE, ÎLE D'AIX, 16th July 1978, ink, 13,8 x 18,7 in



ÎLE D'AIX, 7th July 1979, pencil, 14,4 x 19,2 in





ÎLE D'AIX, 10th July 1979, pencil, 14,4 x 19,2 in





ÎLE D'AIX, HOLLYHOCKS, 21th July 1979, pencil, 14,4 x 19,2 in





ÎLE D'AIX, 18th October 1979, pencil, 14,2 x 18,9 in





ÎLE D'AIX, 6th July 1980, ink, 15,4 x 18,9 in





ÎLE D'AIX, 21th July 1980, ink, 15,2 x 18,9 in





THE TRECH AT ÎLE-AUX-MOINES, 31st August 1980, ink on paper, 15,4 x 18,1 in





ÎLE D'AIX, 12th June 1981, watercolor, 11,5 x 15,7 in





CORFU, 29th July 1982, ink, 18,9 x 15,2 in





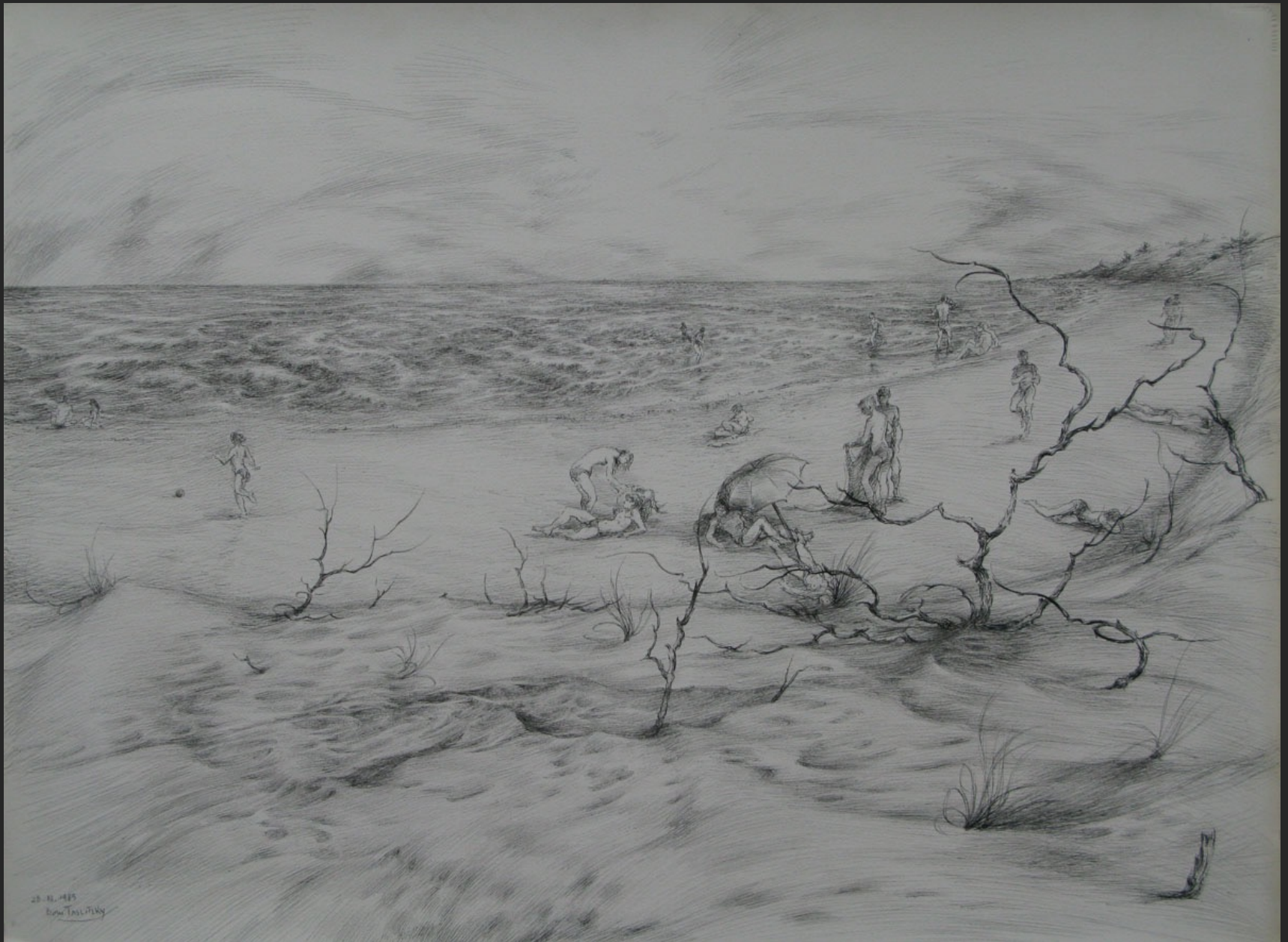
THE HERBAUDIÈRE, 15th September 1984, ink, 15,2 x 18,9 in





THE HERBAUDIÈRE AT NOIRMOUTIER, 23th September 1984, ink, 15,4 x 18,9 in





23-11-1985  
Dora Tassler

BEACH SCENE, 28th October 1985, ink, 22,3 x 30,2 in





DONKEY AND GOAT, 7th November 1985, ink, 22,2 x 30,2 in





WOODED LANDSCAPE, 17th December 1985, ink, 22,1 x 30,2 in