

Boris TASLITZKY

Gallery

STILL LIFES 2





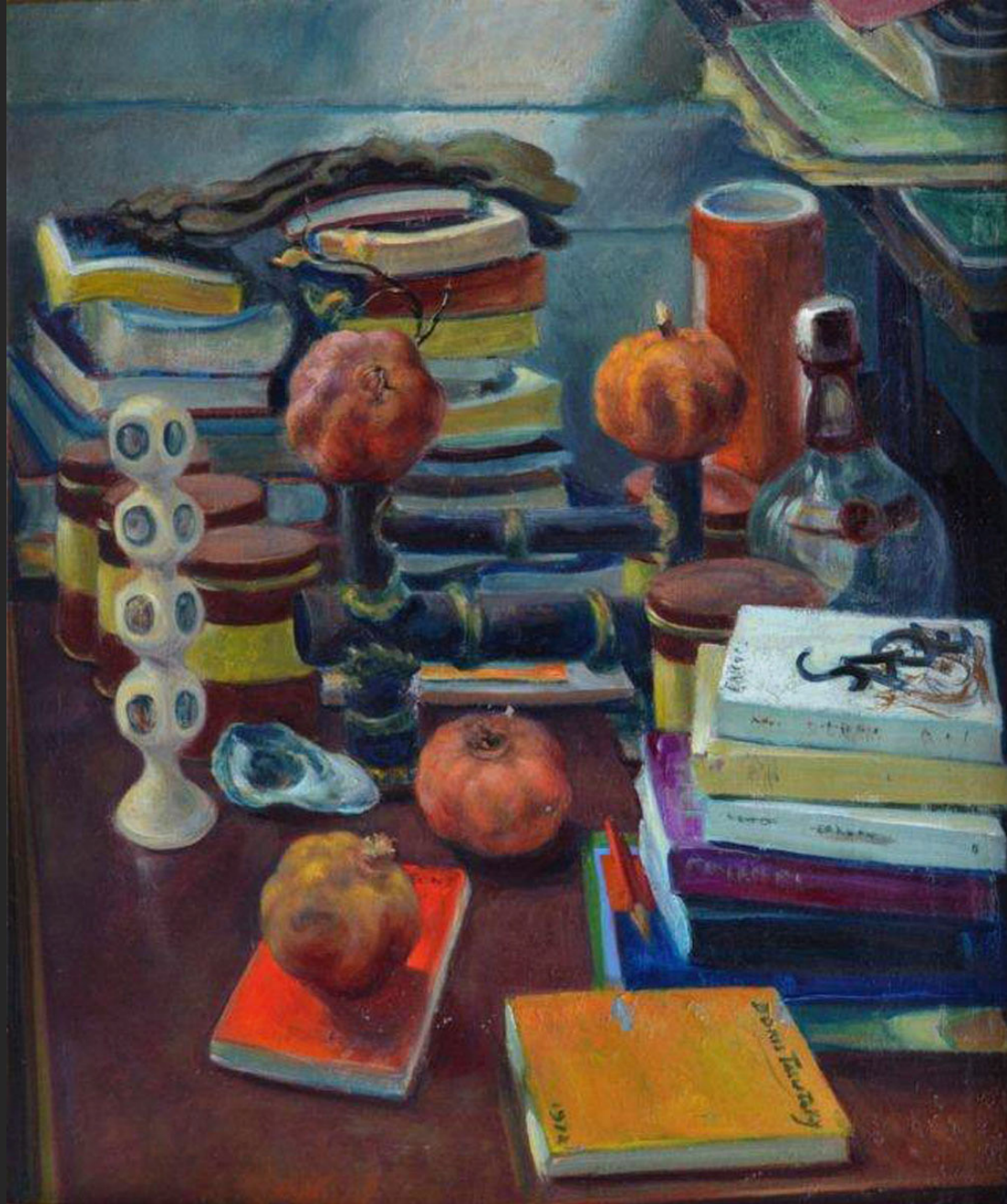
FOUR SHELLS, 1974, oil on canvas, 21,3 x 25,6 in



FIVE WALNUTS, 1974, oil on canvas, 4,7 x 8,7 in



STILL LIFE WITH JUG AND SHELLS, 1974, oil on canvas, 21,3 x 25,6 in



STILL LIFE, 1974, oil on canvas, 25,6 x 21,3 in



PEBBLE AND EGG, 1974, oil on canvas, 5,5 x 7 in



THE SPINY LOBSTER, 1974, oil on canvas, 11,8 x 35,4 in



THE SPINY LOBSTER, 1974, oil on canvas, 15 x 18,1 in



THE HUNGARIAN VASE, 1974, oil on canvas, 18,1 x 10,6 in



THE STUDIO SHELVES, 1975, oil on canvas, 39,4 x 31,9 in



APPLE ON THE BLUE TABLE, 1976, oil on canvas, 21,3 x 25,6 in



THE LIBRARY (Exhibited at SALON DES INDÉPENDANTS 1976), 1975, oil on canvas, 23,6 x 36,2 in



BOUQUET, 1976, oil on canvas, 21,7 x 18,1 in



THE STUDIO, TRIBUTE TO JACQUES LIPCHITZ, 1976, oil on canvas, 27,8 x 18,3 in



THE COLOCYNTH, 1976, oil on canvas, 15 x 24 in



STILL LIFE WITH CORAL, 1976, oil on canvas, 13,8 x 10,6 in



STILL LIFE WITH BUST, 1976, oil on canvas, 26 x 40,2 in



SELF-PORTRAIT WITH WALNUT, 1977, oil on canvas, 36,2 x 28,7 in



APRICOTS ON A PLATE, 1977, oil on canvas, 7,5 x 13 in



COLOCYNTH, 12th December 1977, oil on canvas, 8,6 x 13,8 in



WHITE CORAL ON BROWN BACKGROUND, 1977, oil on canvas, 6,3 x 9,4 in



BLACK GRAPES PLATE, 1977, oil on canvas, 7,5 x 10,6 in



TWO GREEN LEMONS, 1978, oil on canvas, 3,9 x 7 in



ORANGE, 1978, oil on canvas, 7,5 x 9,4 in



GREEN APPLE, 1978, oil on canvas, 7,5 x 9,8 in



GRAPES, 1978, oil on cardboard, 11 x 14,6 in



DEAD LEAVES, 1978, oil on canvas, 18,1 x 24 in



ANEMONES, 1978, oil on canvas, 10,6 x 8,7 in



CORN COB, 1978, oil on canvas, 7,5 x 13 in



NARCISSSES, 1978, oil on canvas, 9,4 x 13 in



IMPATIENS, 1978, oil on canvas, 25,6 x 31,5 in



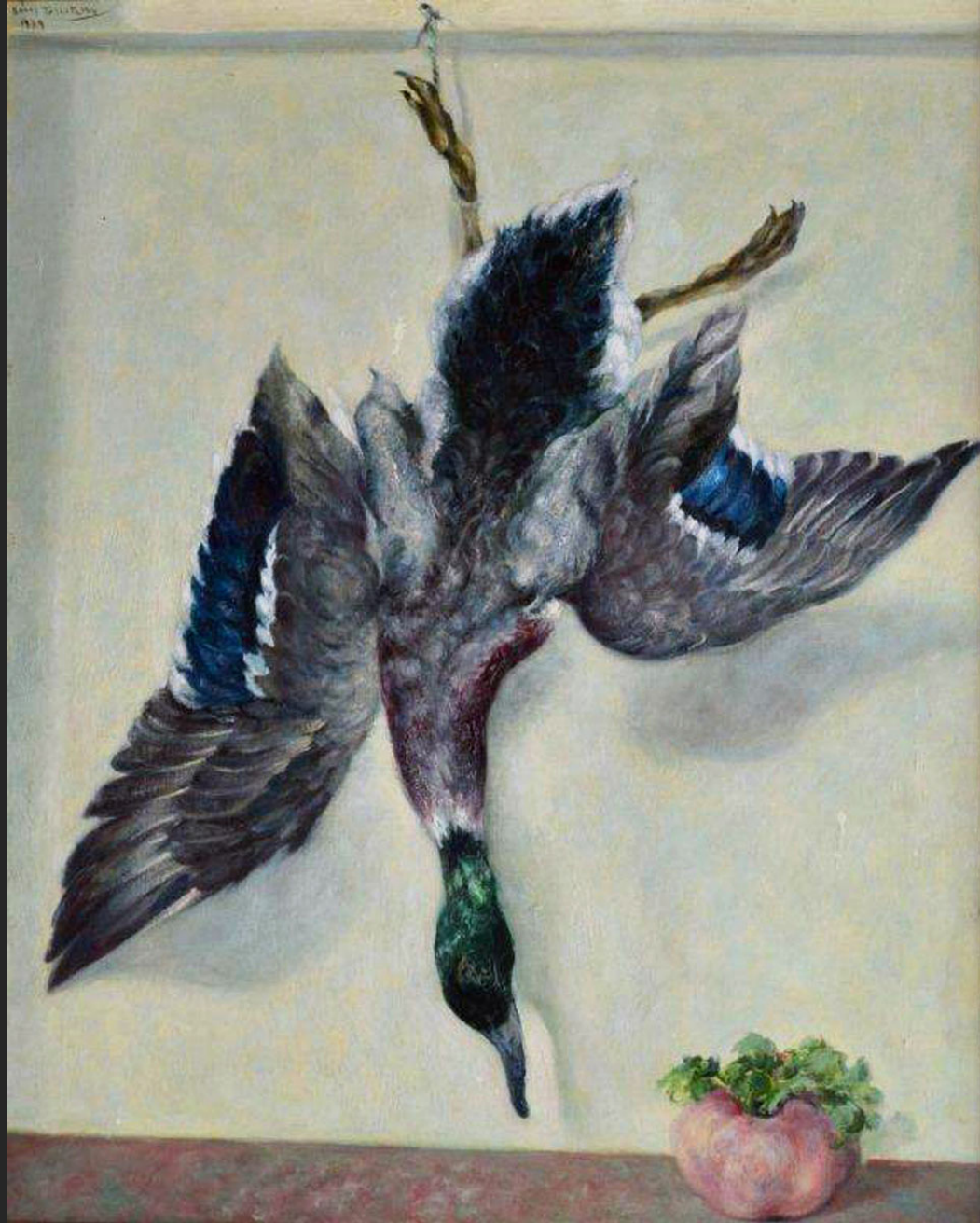
PINE CONE, 1978, oil on canvas, 18,1 x 25,6 in



LYCHEES AND THREE GREEN LEMONS, 1979, oil on canvas, 8,6 x 13 in



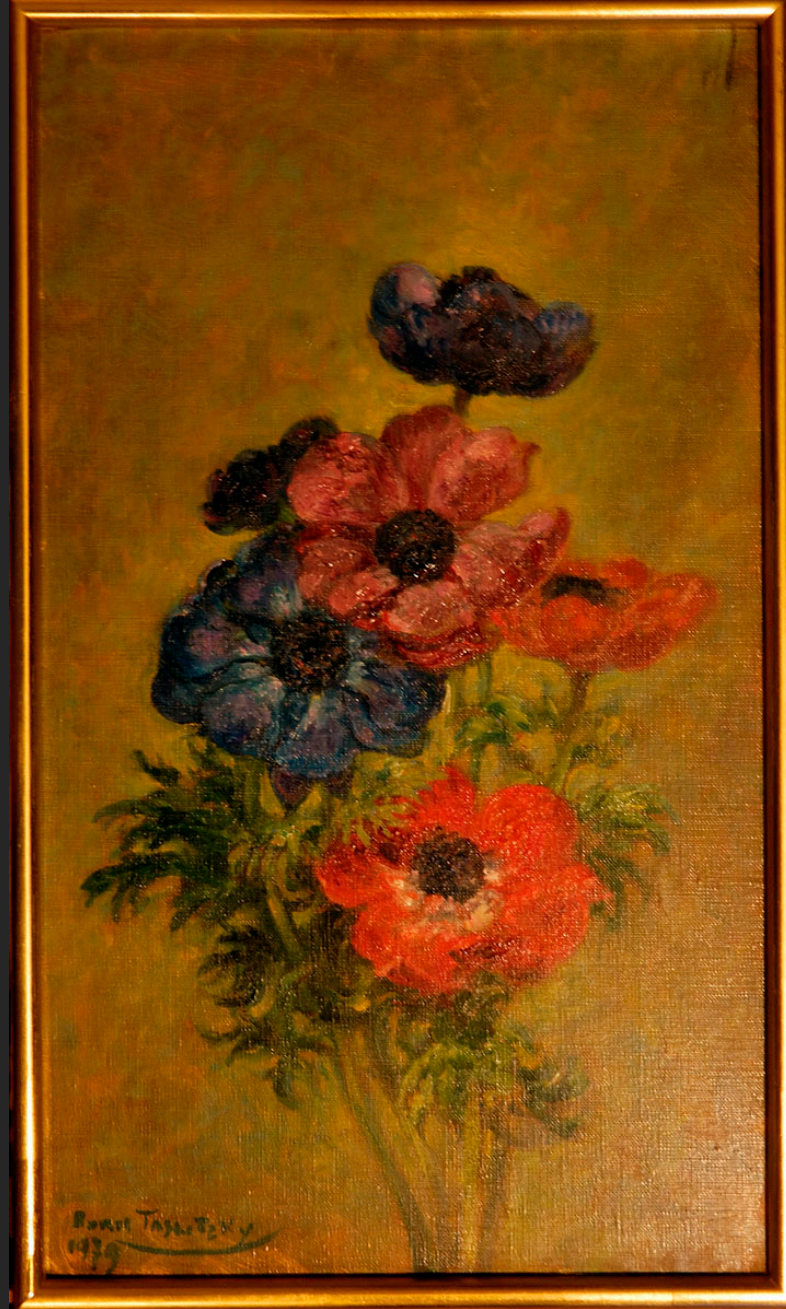
STILL LIFE WITH QUINCES ON RED TABLE, 1979, oil on canvas, 15 x 18,1 in



DUCK WITH TURNIP, 1979, oil on canvas, 31,9 x 26 in



THE NEST, 1979, oil on canvas, 18,1 x 10,6 in



ANEMONES, 1979, oil on canvas, 18,3 x 10,8 in



WHITE GRAPES PLATE, 22nd June 1979, oil on canvas, 7,7 x 10,8 in



Tommaso 1979

THE CROISSANTS, 1979, oil on canvas, 9,4 x 12,6 in



THE DUCK WITH ORANGE, 1979, oil on canvas, 31,9 x 25,6 in



THE NEST, 1979, oil on canvas, 13 x 16,1 in



THE NEST, 1979, oil on canvas, 18,1 x 15 in



PLANT, 1979, oil on canvas, 25,6 x 31,9 in



PITCHERS, 1980, oil on canvas, 18,1 x 10,6 in



TEAPOT, GLASS AND LEMON, 1980, oil on canvas, 21,7 x 13 in



THREE VASES, 1980, oil on canvas, 19,7 x 24 in



THE TIN TEAPOT, 1980, oil on plywood, 10,4 x 13 in



YELLOW FLOWERS, 1980, oil on canvas, 25,6 x 21,3 in



THE NEST, 1980, oil on canvas, 28,7 x 23,6 in



STILL LIFE WITH TUREEN AND WALNUTS, 1980, oil on canvas, 35,8 x 25,6 in



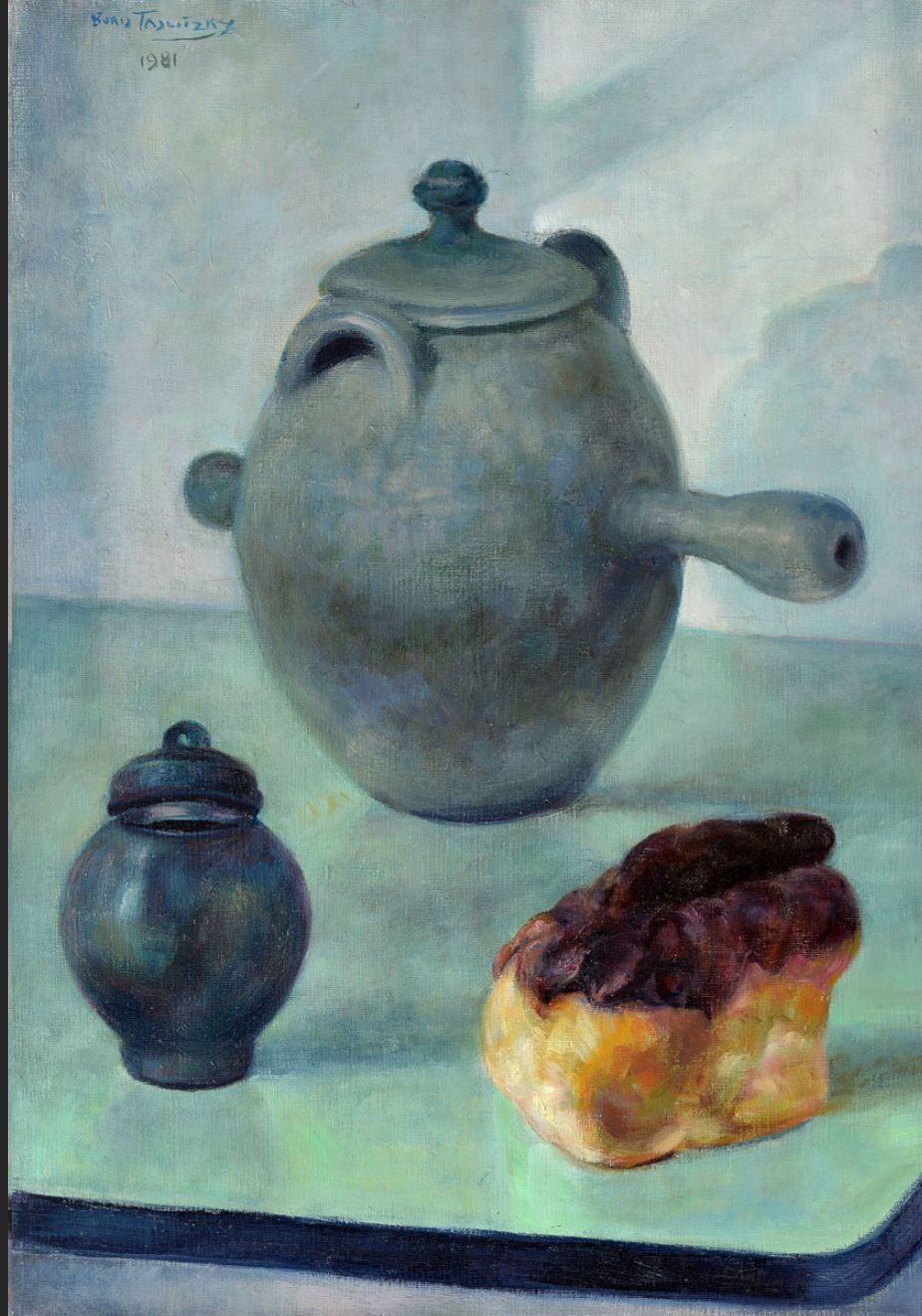
STILL LIFE WITH TUREEN AND WALNUTS, 1980, oil on canvas, 25,6 x 31,9 in



WHITE SANDSTONE POT, 1980, oil on canvas, 18,1 x 31,5 in



STILL LIFE WITH BRIOCHE, 1981, oil on canvas, 21,7 x 15 in



STILL LIFE, 1981, oil on canvas, 21,7 x 15 in



TWO WALNUTS AND BORIS, 1982, oil on cardboard, 3,7 x 5,3 in



BOWL OF WALNUTS, 1982, oil on canvas, 18,1 x 21,7 in



THREE WALNUTS, 1983, oil on plywood, 5,3 x 8,9 in



TWO POMEGRANATES ON A PLATE WITH RED BACKGROUND, 1984, oil on paper, 13 x 12,6 in



STILL LIFE WITH ANEMONES, GRAPES ET CLEMENTINES, 1984, oil on paper, 20,9 x 27,2 in



THE BLACK CHERRIES, 1984, oil on canvas, 10,7 x 16,1 in



THE RED CHERRIES, 1984, oil on canvas, 10,6 x 16,1 in



ANEMONES, 1984, oil on cardboard, 12,6 x 16,1 in



DRIED FLOWERS, 1984, oil on cardboard, 8,3 x 10,8 in