

*Boris TASLITZKY*

# Gallery LANDSCAPES 1





ROOFS AND SKY, 1931, oil on cardboard, 3,5 x 7 in





THE ARTIST'S MOTHER IN LANTOSQUE, 1931, oil on cardboard, 10,6 x 13,7 in





LANTOSQUES I, 1931, oil on cardboard, 10,6 x 13,6 in





LANTOSQUES II, 1931, oil on cardboard, 10,6 x 13,6 in





THE TREE, 8 RUE CROCÉ-SPINELLI, 1932, oil on canvas, 24 x 19,7 in





DOCKS ON THE SEINE, 1934, oil on canvas, 21,7 x 15 in





LANDSCAPE, SAINTE-GENEVIÈVE-DES-BOIS, 1935, oil on cardboard, 7,5 x 9,4 in





THE HOUSE IN THE GREENERY, 1936, oil on canvas, 15,0 x 18,1 in





LANDSCAPE WITH A TREE, 1936, oil on canvas, 9,4 x 7,5 in





THE OLERON ISLAND, 1936, oil on cardboard, 13,8 x 10,6 in





VIEW FROM THE COAST, 1937, oil on cardboard, 7,5 x 9,4 in





THE MONTBOUCHER LANDSCAPE (CREUSE), 1948, oil on cardboard, 8,6 x 10,5 in





PARIS, 1948, oil on canvas, 8,9 x 10,8 in





SEASCAPE IN VENDÉE (OLÉRON), 1949, oil on canvas, 18,1 x 21,7 in





CAP FERRET, 1949, oil on cardboard, 10,6 x 13,8 in





LANDSCAPE, 1950, oil on canvas, 8,7 x 10,8 in





HAUTE-LOIRE, 1950, oil on cardboard, 6,3 x 8,7 in





SURROUNDINGS OF SAINT-RAPHAËL, 1950, oil on canvas, 19,7 x 24 in





TWO WOMEN IN THE SAUMONARDS FOREST NEAR BOYARDVILLE, 1952, oil on canvas, 44,9 x 57,9 in





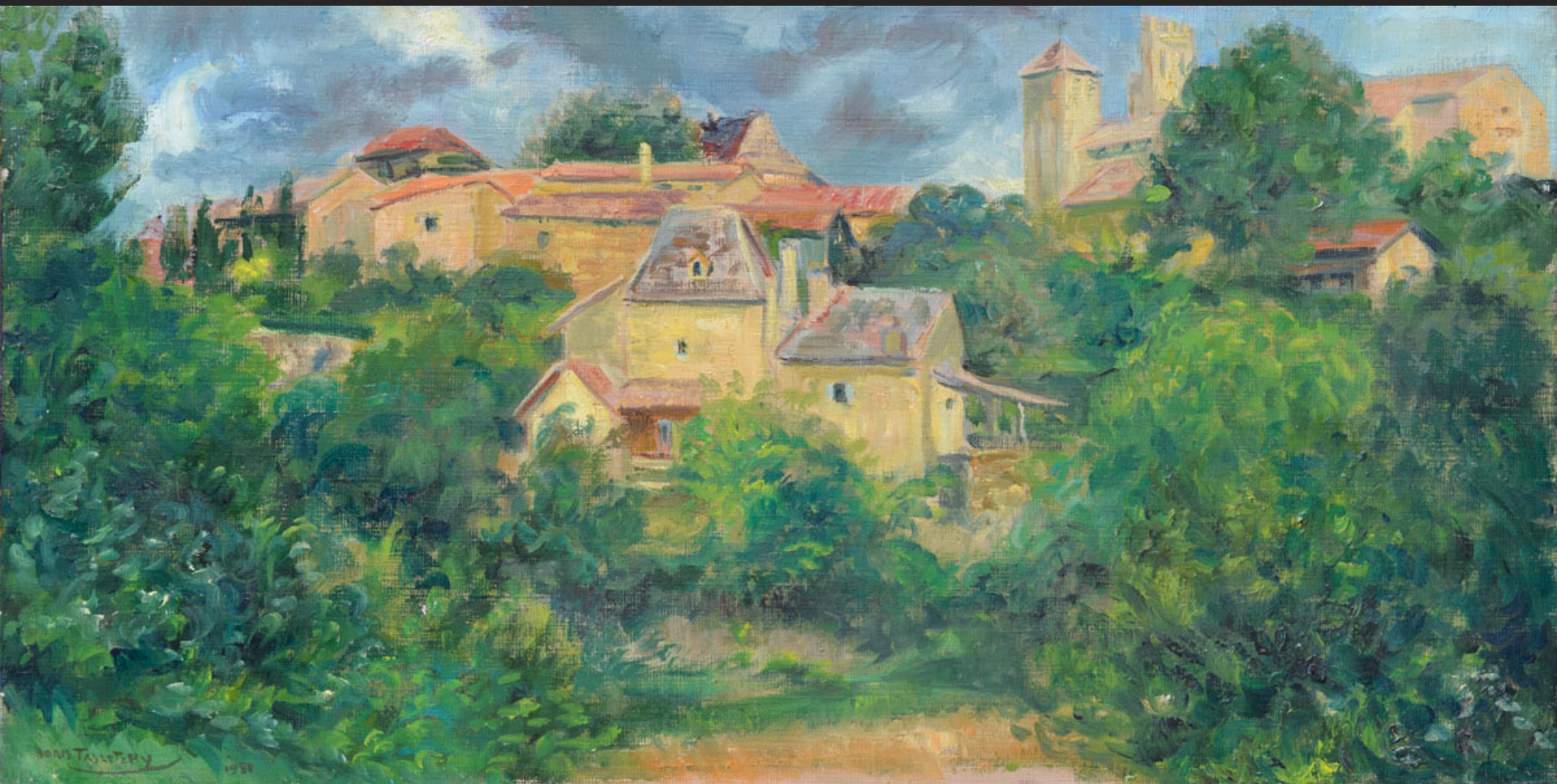
THE PORT OF ORAN, 1952, oil on canvas, 19,7 x 25,6 in





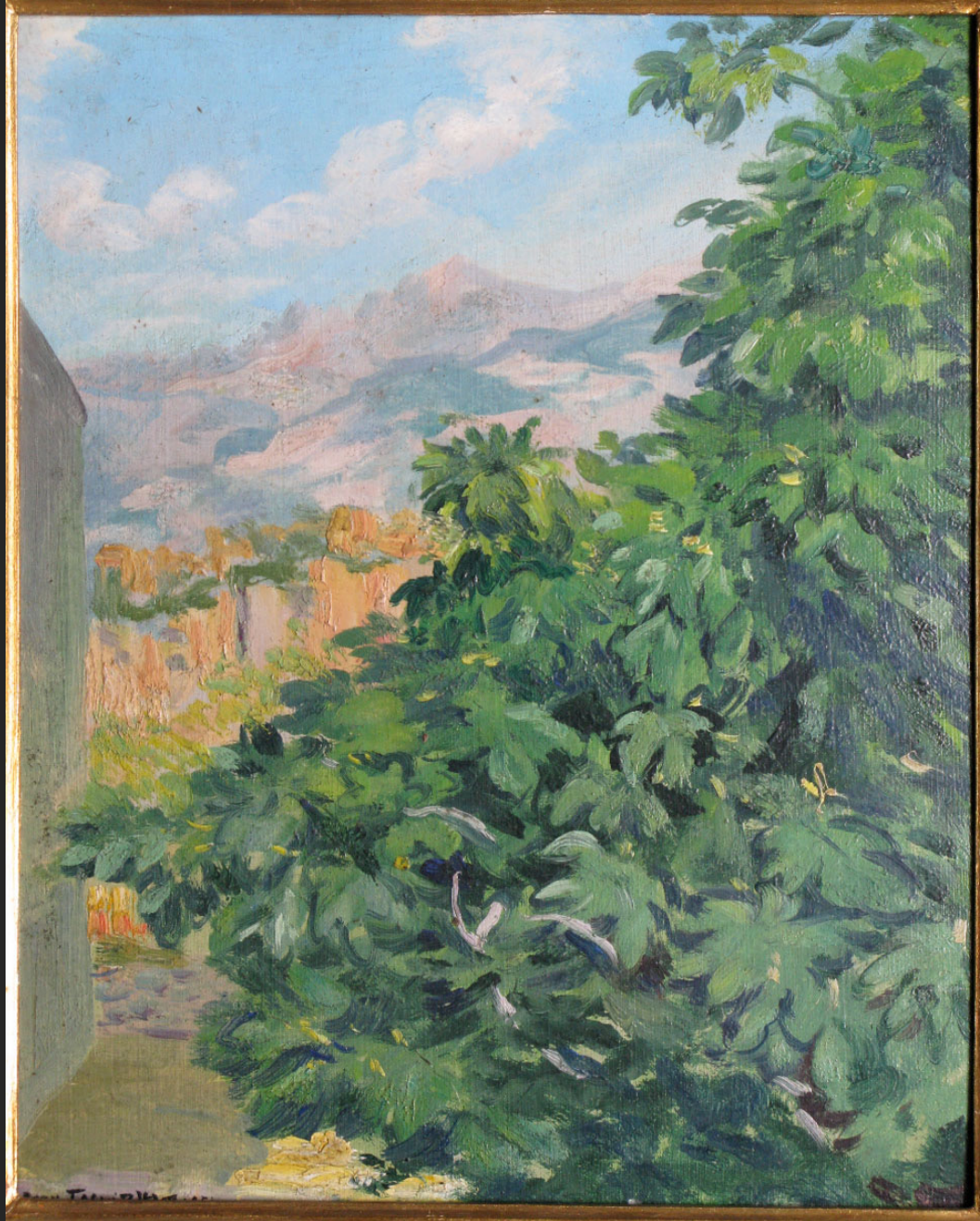
LANDSCAPE OF ORAN, 1952, oil on canvas, 15 x 21,7 in





THE LOT, 1952, oil on canvas, 9,8 x 19,7 in





CORSICAN LANDSCAPE WITH VILLAGE, 1952, oil on cardboard, 10,6 x 8,3 in





PIANA LANDSCAPE, 1953, oil on canvas, 18,1 x 21,3 in





CORSICAN LANDSCAPE, undated (1954), unsigned, oil on canvas, 13 x 18,1 in





CORSICAN LANDSCAPE WITH CHARACTERS, 1955, oil on canvas, 15 x 18,1 in





VENDEE COAST, 1956, oil on canvas, 21,7 x 18,1 in





SUZANNE IN BRITTANY, 1956, oil on canvas, 15 x 18,1 in





SEASCAPE, 1957, oil on paper pasted on cardboard , 5,9 x 14,2 in





SAINTE-MARGUERITTE DE PORNICHE, 1957, oil on cardboard, 8,7 x 10,7 in





LE CROISIC, 1957, oil on cardboard, 8,7 x 10,6 in





SAINTE-MARGUERITTE DE PORNICHE (SUZANNE), 1957, oil on canvas, 21,3 x 31,9 in





MARITIME PINE WOOD (Probably Îles de Lérins), 1957, oil on canvas, 31,9 x 21,1 in





PÉRIGORD NOIR, THIVIERS, 1957, oil on canvas, 12,6 x 18,1 in





THE BRIDGE ON THE RIVER, 1957, oil on canvas, 13 x 15,7 in





BOATS, 1957, oil on cardboard, 12,6 x 10,6 in





SAINT-RAPHAËL, 1957, oil on cardboard, 8,7 x 10,6 in





SAINT-RAPHAËL BEACH, 1957, oil on cardboard, 8,6 x 10,6 in





KROUJA (MAIN ROAD - SURROUNDINGS OF TIRANA - ALBANIA), 27th September 1957, oil on cardboard, 8,6 x 10,6 in





MOUNT DASTI TIRANA (ALBANIA), 27th September 1957, oil on cardboard, 8,6 x 10,6 in





THE PETRELA CASTLE (ALBANIA), 22nd September 1957, oil on cardboard, 8,6 x 10,6 in





YACHTS AT LOW TIDE, 1958, oil on canvas, 15 x 18,1 in





THE TREE, 1958, oil on canvas, 23,6 x 19,7 in





SURROUNDINGS OF SAINT-RAPHAËL, 1958, oil on cardboard, 8,6 x 10,6 in





THE ROOFS, 1958, oil on canvas, 8,6 x 10,6 in





SAINT-MICHEL MILL, SAINT-QUAY-PORTRIEUX (CÔTE D'ARMOR), 1959, oil on canvas, 18,1 x 21,7 in





CORSICAN LANDSCAPE, PIANA, 1959, oil on canvas, 10,6 x 16,1 in





GARDEN IN BELGIUM, 1959, oil on canvas, 24 x 19,7 in





BRITTANY, 1959, oil on canvas, 21,7 x 18,1 in





LANDSCAPE, 1959, oil on canvas, 24,0 x 19,7 in





SAINT-QUAY-PORTRIEUX BEACH, 1959, oil on canvas, 18,1 x 21,6 in





LANDSCAPE, 1959, oil on canvas, 18,1 x 21,6 in





BASQUE COUNTRY, 1960, oil on canvas, 18,1 x 21,6 in





BASQUE COUNTRY, 1960, oil on canvas, 18,1 x 21,6 in





SEASCAPE, 1960, watercolor, 10,6 x 19,7 in





RUINS OF THE MADELEINE CASTLE, CHEVREUSE (YVELINES), 1961, oil on canvas, 20 x 24,4 in





THE RIVER LAITA, 1961, oil on canvas, 15 x 18,1 in





BRITTANY LANDSCAPE (SUZANNE), 1961, oil on canvas, 18,1 x 21,6 in





BRITTANY, 1961, oil on canvas, 18,1 x 21,6 in





THE LUXEMBOURG, 1962, oil on cardboard, 8,7 x 10,4 in





GARDEN WITH IRIS, 1962, oil on canvas, 18,1 x 21,7 in





BRITTANY, 1962, oil on canvas, 18,1 x 21,6 in





SEASCAPE IN BRITTANY, 1962, oil on canvas, 15,7 x 31,5 in





BRITTANY II, 1962, oil on canvas, 18,1 x 21,6 in





BRITTANY, 1962, oil on canvas, 18,1 x 21,6 in





BRITTANY, 1962, oil on canvas, 13 x 18,1 in





LANDSCAPE, 1963, oil on cardboard, 8,7 x 10,6 in





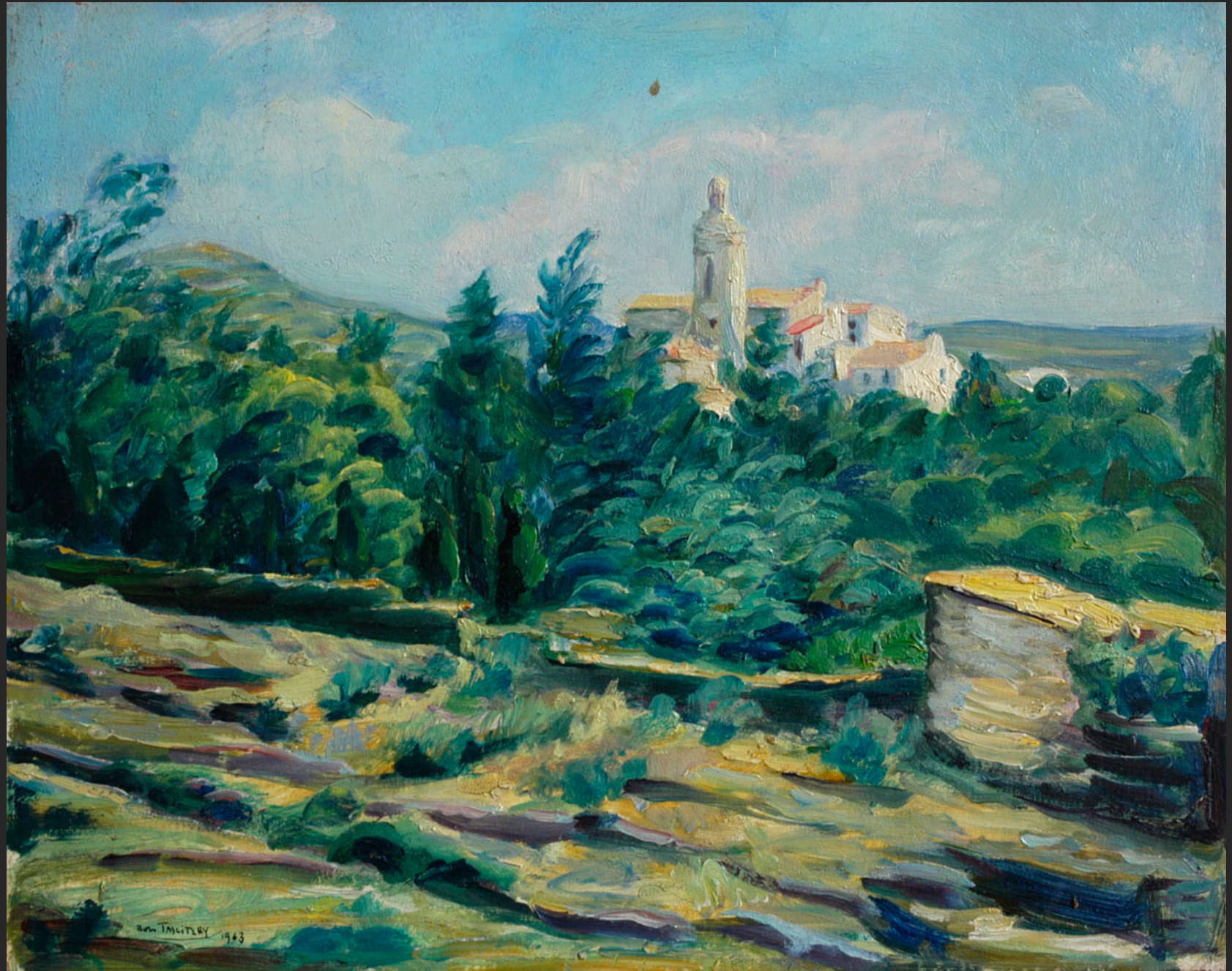
SPANISH LANDSCAPE, undated, oil on cardboard, 8,5 x 10,2 in





CADAQUÉS (SPAIN), 1963, oil on cardboard, 8,7 x 10,6 in





SPANISH LANDSCAPE, 1963, oil on cardboard, 8,7 x 10,6 in





LANDSCAPE IN BRITTANY I, 1964, oil on canvas, 18,1 x 21,6 in





LANDSCAPE IN BRITTANY II, 1964, oil on canvas, 18,1 x 21,6 in





LANDSCAPE WITH RED ROOFS, 1964, oil on canvas, 15 x 18,1 in





BELLE-ÎLE-EN-MER, 1964, oil on canvas, 21,3 x 25,6 in





LANDSCAPE, 1964, oil on canvas, 18,1 x 21,6 in





FARM IN BELLE-ÎLE, 1964, oil on canvas, 28,7 x 45,6 in