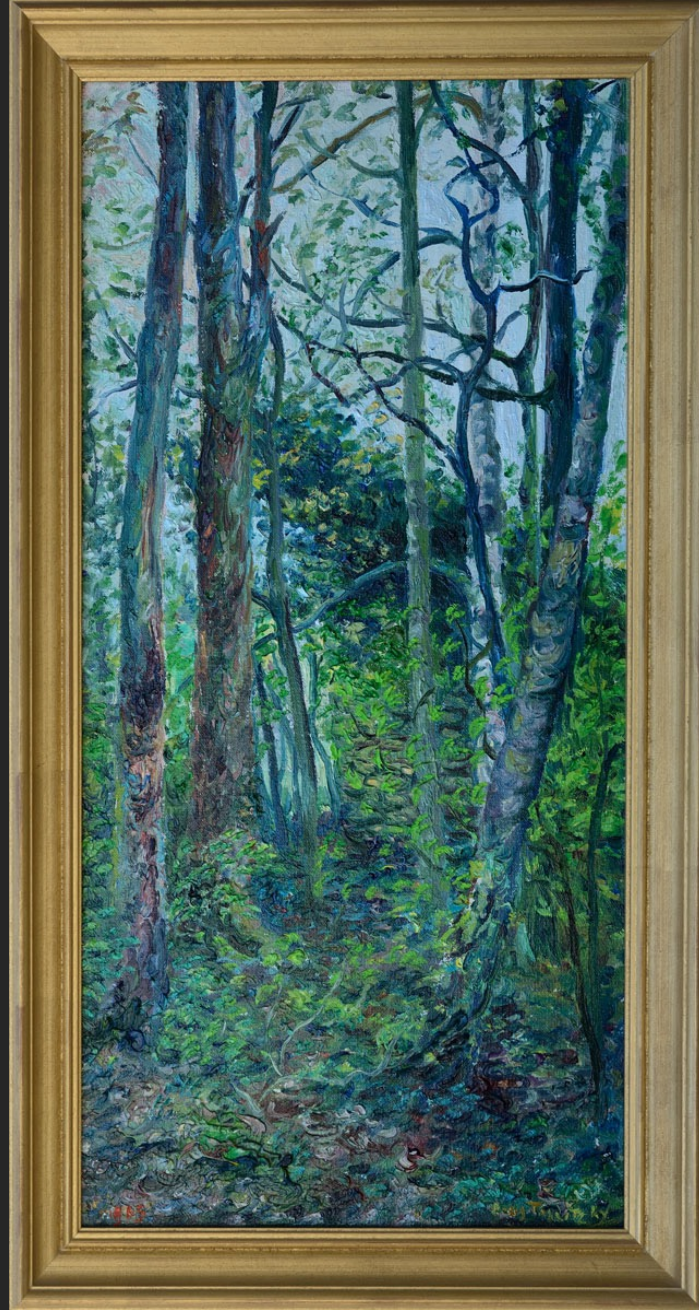


*Boris TASLITZKY*

# Gallery LANDSCAPES 2





UNDERGROWTH, 1965, oil on canvas, 23,6 x 11,8 in



UNDERGROWTH, 1965, oil on canvas, 21,7 x 18,1 in



LANDSCAPE, 1966, oil on canvas, 18,1 x 21,7 in



TREE IN SAINT-BREVIN-LES-PINS, 1966, oil on canvas, 21,7 x 18,1 in



PLACE DES VOSGES ( PAINTING APPEARING WITH BORIS IN A SCENE OF THE MOVIE «PARIS BRÛLE-T-IL ?»), 1966, oil on canvas, 18,1 x 21,7 in



BRITTANY, 1966, oil on canvas, 18,1 x 21,7 in



THE STUDIO YARD, RUE CAMPAGNE-PREMIÈRE, 1967, oil on canvas, 31,5 x 39,4 in





THE POND OF CAP COZ, 1968, oil on canvas, 19,7 x 24 in



MARINE IN CAP COZ, 1968, oil on canvas, 19,7 x 24 in



SMALL BOATS IN BRITTANY, 1968, oil on canvas, 19,7 x 24 in



CAP-COZ LANDSCAPE, 1968, oil on canvas, 18,9 x 23,6 in



THE ACACIA NEAR THE STUDIO DOOR, 1969, oil on canvas, 31,5 x 15,7 in



THE STUDIO YARD, RUE CAMPAGNE-PREMIÈRE, 1969, oil on canvas, 21,7 x 18,1 in



THE TREE, 1970, oil on canvas, 36 x 28,7 in



MARINE, July 23rd, 1972, oil on cardboard, 8,7 x 10,6 in





POPLARS, RUE RICAUT, 1972, oil on canvas, 36,2 x 23,6 in



SEASCAPE (CAMPING), 1972, oil on cardboard, 8,7 x 10,6 in



BEACH, July 24th, 1972, oil on plywood, 8,7 x 10,6 in



MARINE, 25th July 1972, oil on plywood, 8,7 x 10,6 in



MARINE, 28th July 1972, oil on plywood, 8,7 x 10,6 in



THE NURSERY, RUE RICAUT, 1973, oil on canvas, 28,7 x 36,2 in



THE POPLAR, 1974, oil on canvas, 28,7 x 19,7 in



LANDSCAPE, 1977, oil on canvas, 55 x 38 in





RICAUT SQUARE, 1977, oil on canvas, 31,9 x 25,6 in



POPLARS, RUE RICAUT, 1978, oil on canvas, 31,9 x 25,6 in



LANDSCAPE IN DORDOGNE, 1980, oil on canvas, 31,5 x 31,5 in



THE BLADE BOW, 1981, oil on canvas, 11,8 x 23,6 in



LA POINTE DU TRECH', L'ÎLE-AUX-MOINES, 1981, oil on canvas, 11,8 x 23,6 in



DORDOGNE, 1981, oil on canvas, 38,2 x 63,8 in



DORDOGNE, 1981, oil on canvas, 23,6 x 36,2 in



THE LOT, 1981, oil on canvas, 21,7 x 18,1 in





OLIVE TREES (CORFU), 1982, oil on canvas, 23,6 x 31,5 in



CORFU, 1982, oil on canvas, 23,6 x 28,7 in



THE BEACH I, 1982, oil on canvas, 13,8 x 27,6 in



THE BEACH II, 1982, oil on canvas, 13,8 x 27,6 in



OLIVE TREES, 1982, oil on canvas, 31,9 x 23,6 in



ÎLE-AUX-MOINES LANDSCAPE «TOR PERROQUET», 1983, oil on canvas, 23,6 x 28,7 in



MARINE, 1983, oil on canvas, 21,7 x 25,6 in



TREE AND LOW WALL IN CORSICA, 1985, oil on canvas, 18,1 x 15 in





UNDERGROWTH, 1988, oil on canvas, 36,6 x 28,7 in



THE WILLOW, 1994, oil on canvas, 25,6 x 31,9 in



SAINT-RAPHAËL, undated, oil on cardboard, 8,7 x 10,6 in



LANDSCAPE IN LOT (FONS), 1993, oil on canvas board, 9,8 x 13,8 in



TWO WALKERS IN UNDERGROWTH, LANDSCAPE IN LOT, 1993, oil on canvas pasted on cardboard, 9,8 x 13,8 in



YOUNG GIRL BY THE WEEPING WILLOW, 1994, oil on canvas, 25,6 x 31,9 in



THE WEEPING WILLOW, 1994, oil on canvas, 23,6 x 23,6 in



SEASIDE (SAINT-PALAIS), 1997, oil on canvas board, 19,7 x 27,6 in





BRITTANY, 1997, oil on canvas, 15,7 x 19,7 in



SEASCAPE (SAINT-PALAIS), 1997, oil on canvas board, 19,7 x 27,6 in



MARINE, 1997, oil on canvas board, 19,7 x 27,6 in



SEASCAPE, 1997, oil on canvas board, 15 x 21,7 in



COUPLE IN A LANDSCAPE, 2000, oil on canvas, 24 x 19,7 in



SILHOUETTES IN A LANDSCAPE (1), 2000, oil on canvas, 36,2 x 28,7 in



SILHOUETTES IN A LANDSCAPE (2), 2000, oil on canvas, 36,2 x 28,7 in



LANDSCAPE, undated, oil on wood, 8,7 x 10,6 in





BOATS IN NORMANDY, undated, oil on canvas, 19,7 x 24 in



LANDSCAPE IN BRITTANY, undated, oil on canvas, 19,7 x 24 in