

Boris TASLITZKY

Gallery PORTRAITS 2





ANNIE KRIEGEL, 1953, oil on canvas, 25,6 x 21,3 in



EVELYNE WITH RED BLOUSE, 1953, oil on canvas, 13,8 x 10,6 in



PORTRAIT OF MICHÈLE MARONNI, 1954, oil on canvas, 9,4 x 7,5 in



EVELYNE WITH GERANIUMS, 1954, oil on canvas, 7,5 x 18,9 in



EVELYNE, 1954, oil on canvas, 35,8 x 28,7 in



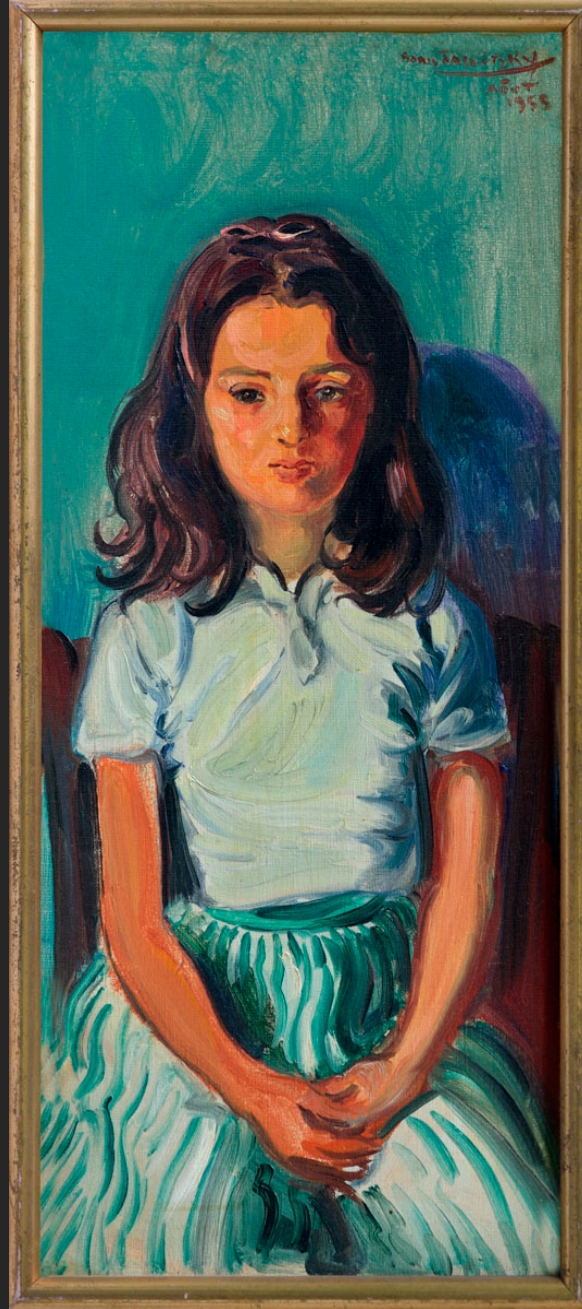
THE MAN WITH THE CHILD, 1954, oil on canvas, 51,2 x 31,7 in



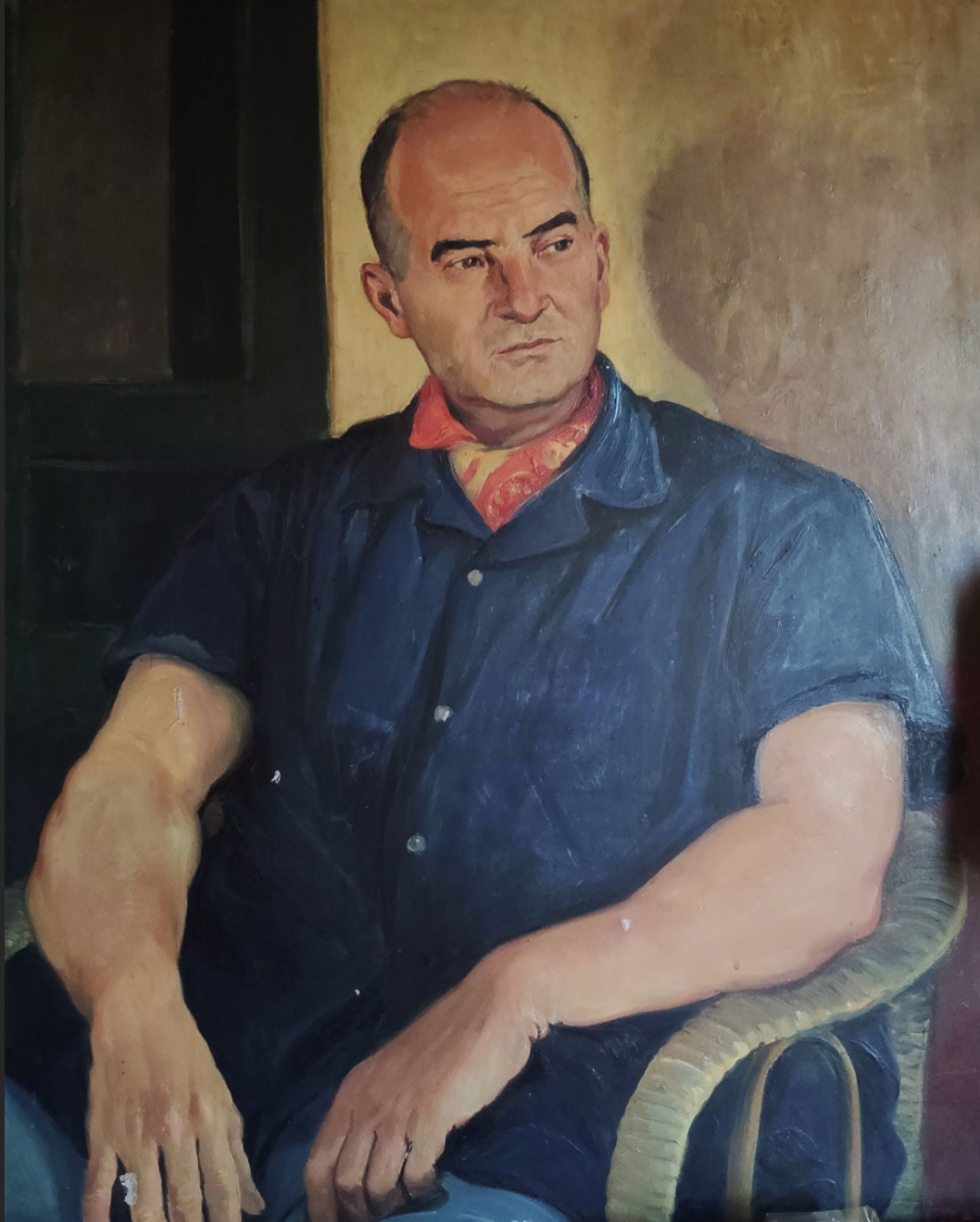
THE PAINTER ISMAEL DE LA SERNA, 1954, oil on canvas, 39,4 x 31,9 in



THE PAINTER ISMAEL DE LA SERNA, 1954, oil on canvas, 18,1 x 15 in



EVELYNE WITH THE STRIPED SKIRT, 1955, oil on canvas plywood, 13,8 x 5,9 in



PORTRAIT OF LAURENT CASANOVA, 1955, oil on canvas, 43,3 x 31,5 in



LOUIS ARAGON AND ELSA TRIOLET, 1955, oil on canvas, 13 x 9,4 in



LOUIS ARAGON AND ELSA TRIOLET, 1955, oil on canvas, 51,8 x 38,2 in



SUZANNE, 1955, oil on canvas, 21,7 x 18,1 in



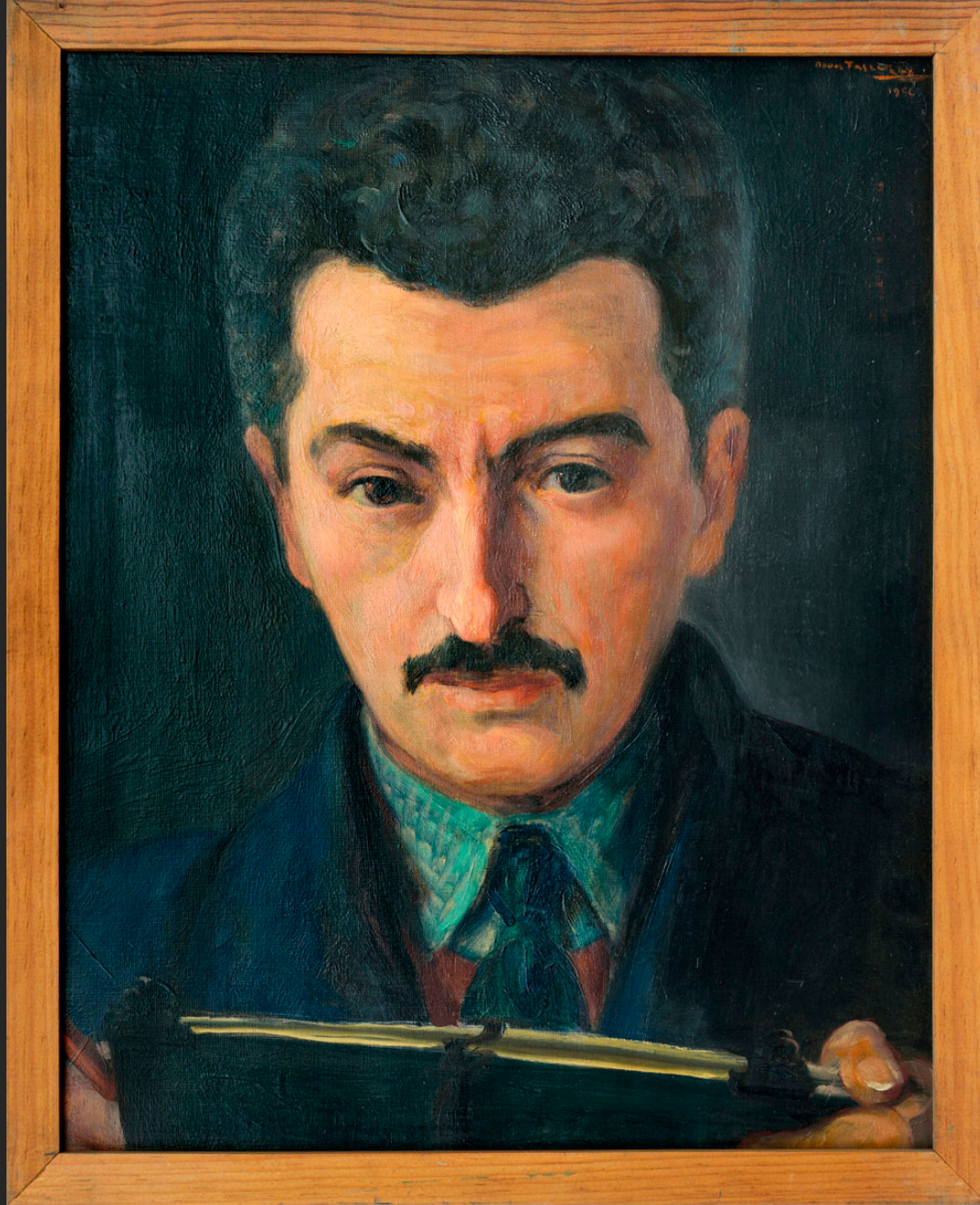
PORTRAIT OF A YOUNG PHILOSOPHER, LUCIEN SEBBAG, 1955, oil on canvas, 21,5 x 13 in



THE SCULPTOR LOUIS BANCEL, 1955, oil on canvas, 21,7 x 18,1 in



ARTHUR KRIEGEL, 1956, oil on canvas, 25,6 x 21,3 in



PORTRAIT OF THE PAINTER WORMSER, 1956, oil on canvas, 16,5 x 13 in



EVELYNE WITH BRAIDS, May 27th, 1956, oil on canvas, 16,1 x 9,5 in



EVELYNE WITH A FRIEND, 1956, oil on canvas, 13 x 8,7 in



WOMAN WITH MANTILLA, 1956, oil on canvas, 28,7 x 23,6 in



BRUNETTE WITH RED OVERCOAT, 1956, oil on canvas, 18,1 x 13,4 in



SPANISH WOMAN, 1956, oil on canvas, 28,7 x 23,6 in



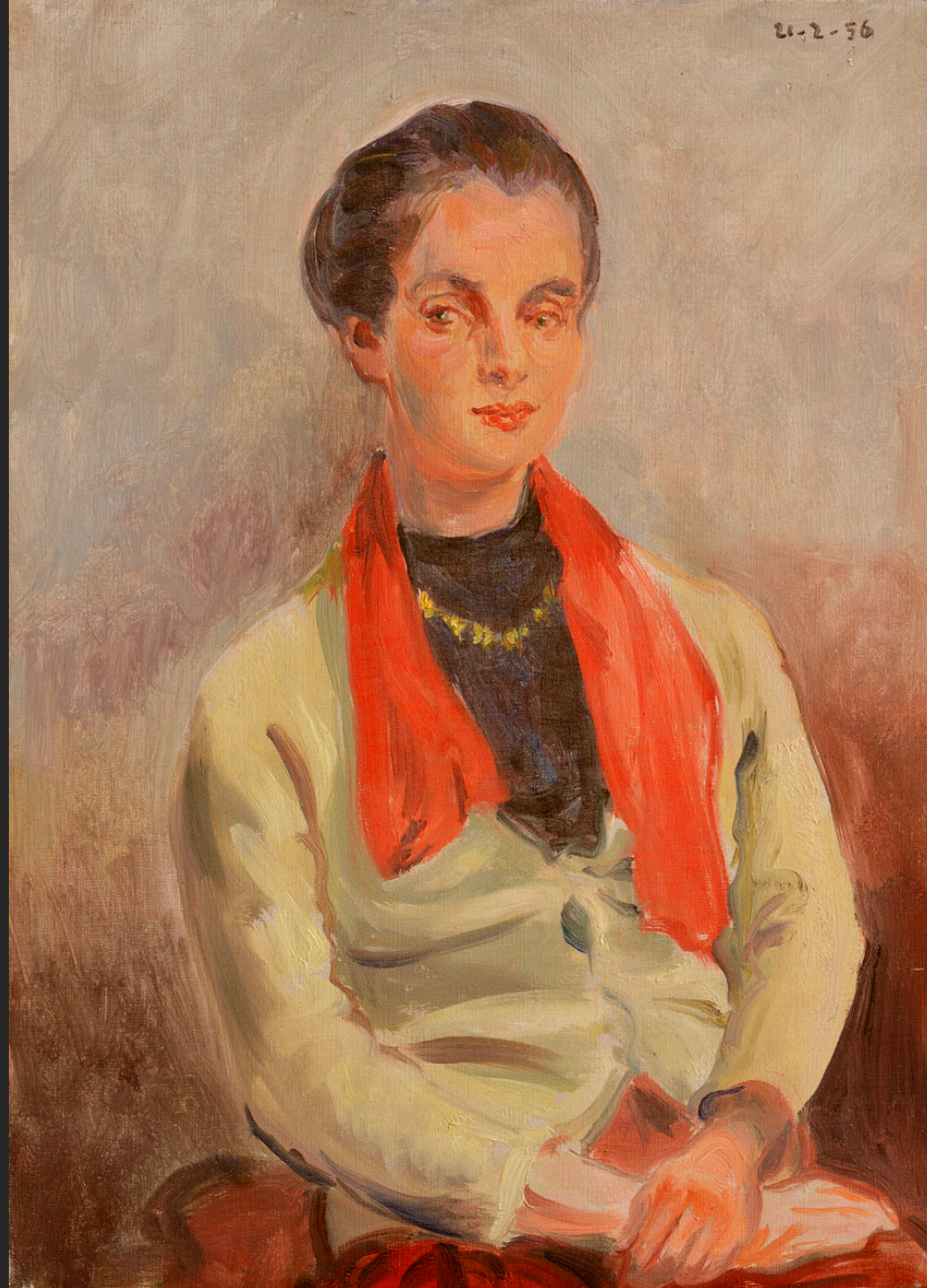
YOUNG BLONDE WOMAN WITH BLACK TURTLENECK, 1956, oil on canvas, 21,7 x 18,1 in



READING MAN (André Gisselbrecht), 1956, oil on canvas, 35,8 x 28,7 in



YOUNG GIRL IN A BROWN TUNIC, 1956, oil on canvas, 21,7 x 18,1 in



SUZANNE, February 21st, 1956, oil on canvas, 13,1 x 9,4 in



SELF-PORTRAIT, 1956, oil on canvas, 7 x 3,9 in



CARABINIER, 1957, oil on canvas, 31,9 x 39,6 in



PORTRAIT OF THERESE, 1957, oil on cardboard, 10,6 x 8,7 in



PORTRAIT OF LUCIEN SEBAG, 1957, oil on canvas, 26,4 x 26,4 in



LOUIS ROUSSELET AT THE FIRE, 22 March 1957, oil on canvas, 17,7 x 22,1 in



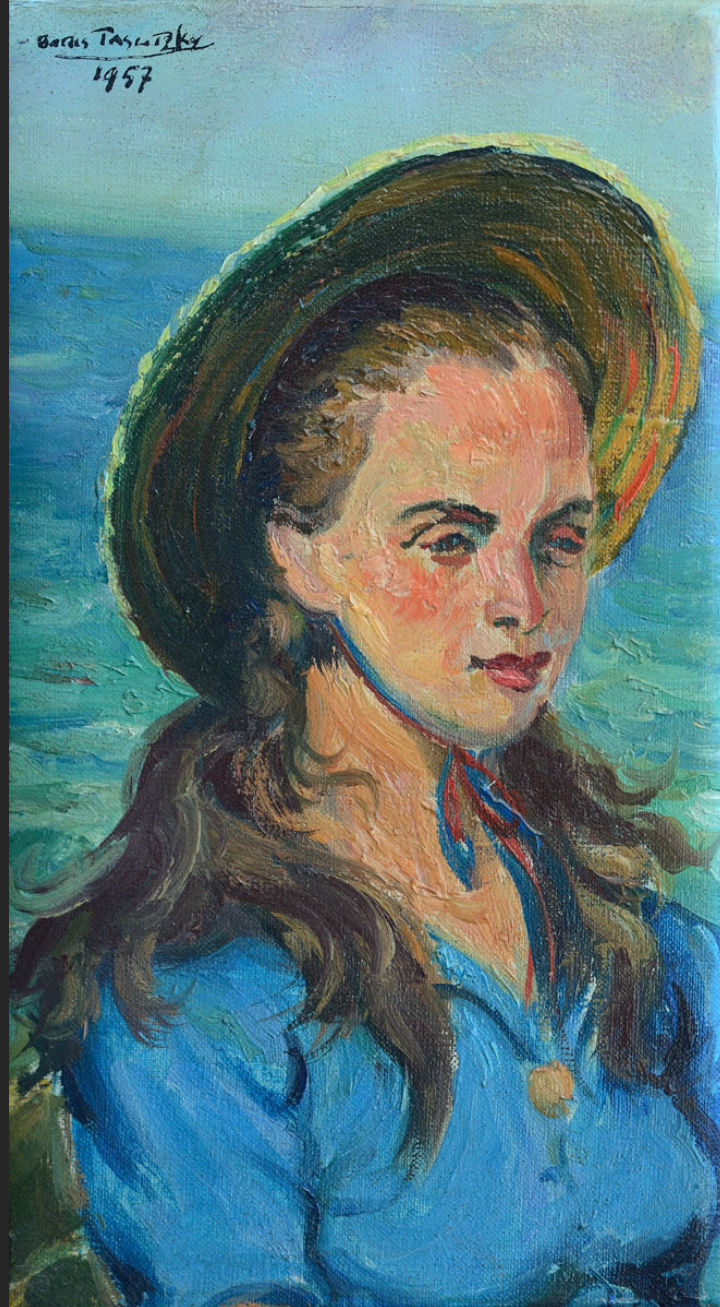
EVELYNE, 24 March 1957, oil on canvas, 18,1 x 15 in



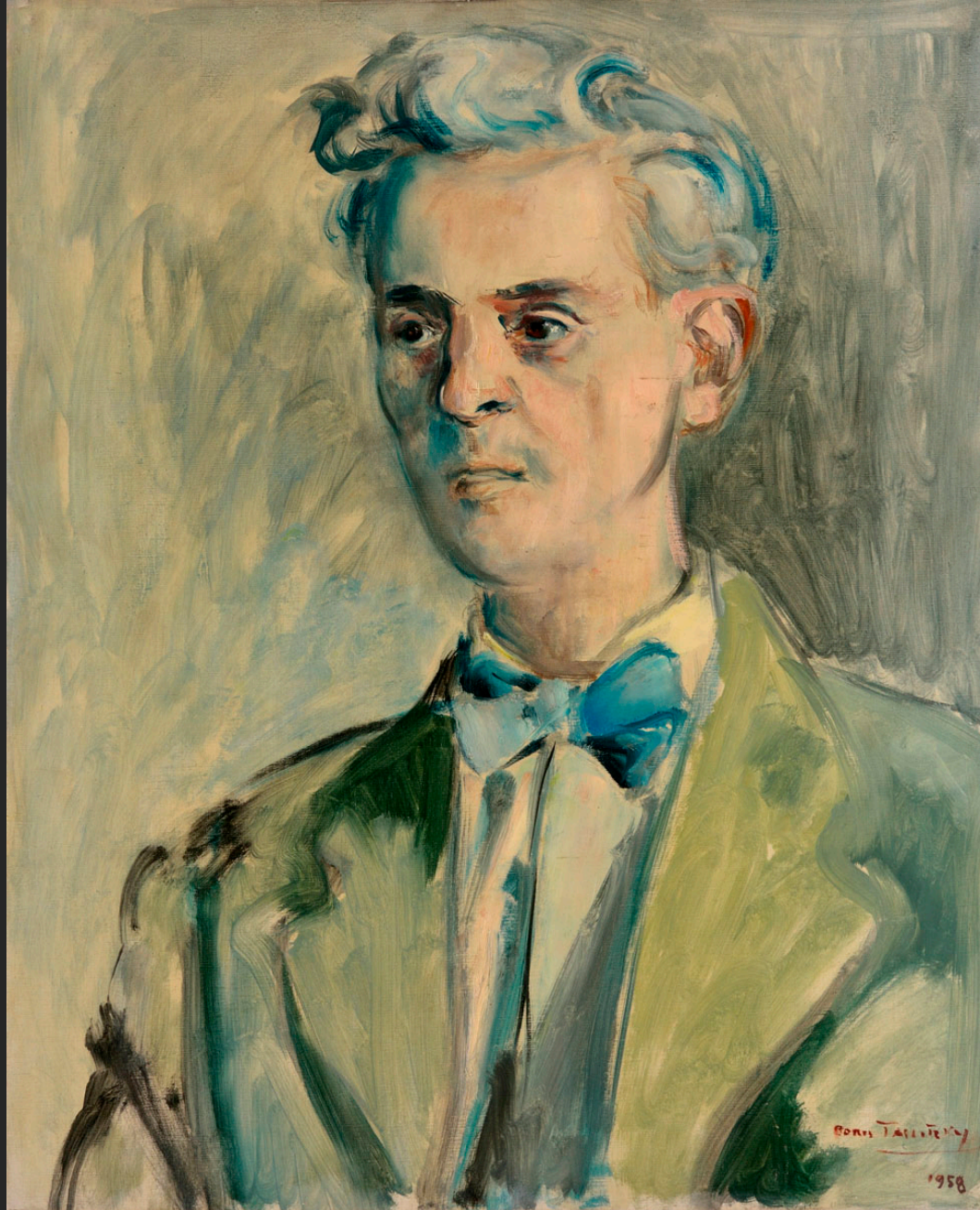
THE WOMAN WITH THE CHILD, 1526, oil on canvas, 45,7 x 35 in



EVELYNE SEWING, 1957, oil on canvas, 8,7 x 5,5 in



SUZANNE WITH A STRAW HAT, 1957, oil on canvas, 7 x 3,9 in



MAN WITH BOW TIE, THE PUPPETEER JACQUES CHESNAIS, 1958, oil on canvas, 21,7 x 18,1 in



FACE, STUDY FOR THE GOOD SAMARITAN, 1959, oil on canvas, 21,7 x 18,1 in



YOUNG BRUNETTE, 1959, oil on canvas, 24 x 19,7 in



THE ACTRESS IN A WHITE DRESS (MADELEINE OZERAY), 1959, oil on canvas, 28,7 x 20,9 in



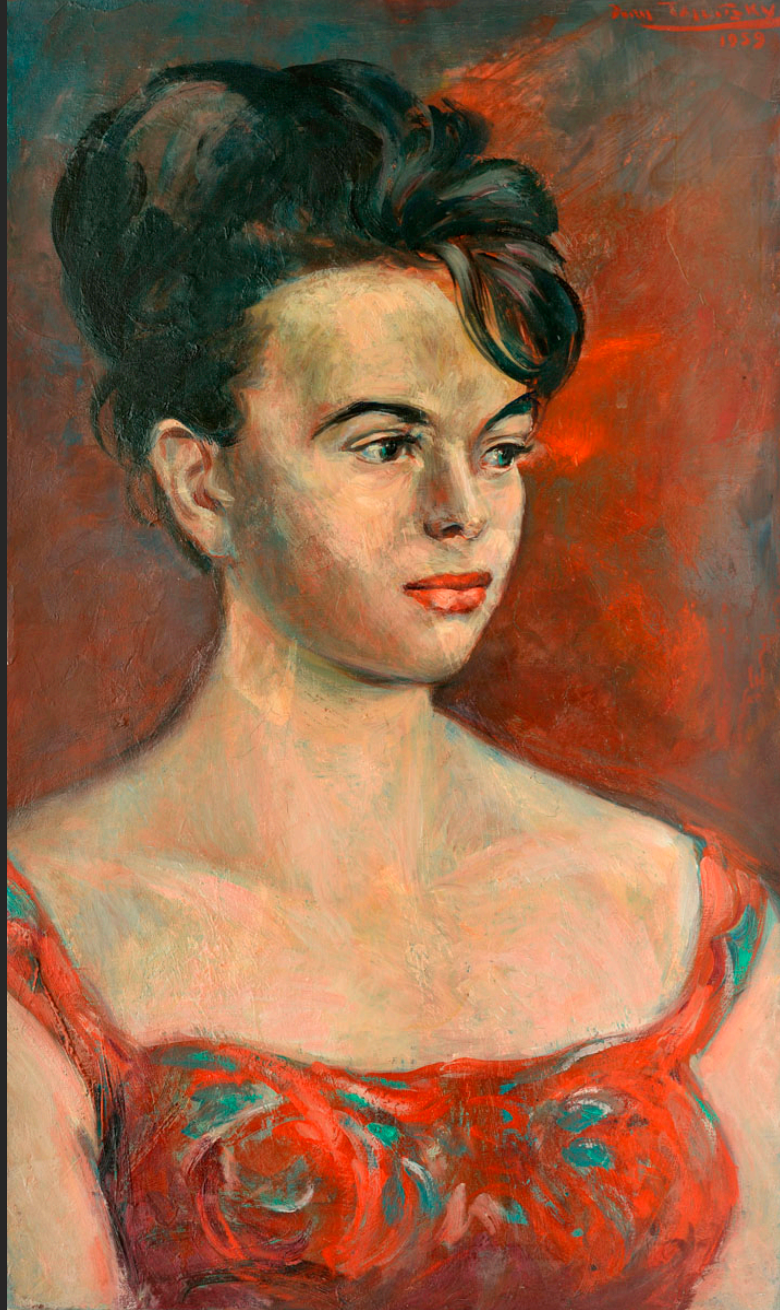
THE ACTRESS MADELEINE OZERAY, 1959, oil on canvas, 25,6 x 18,1 in



THE ACTRESS MADELEINE OZERAY, 1959, oil on canvas, 31,9 x 25,6 in



MARIE-PIERRE, 1959, oil on canvas, 31,9 x 23,6 in



WOMAN WITH BUN, 1959, oil on canvas, 18,1 x 10,6 in



TWENTY YEARS-OLD MIREILLE LAVAL, 1959, oil on canvas, 18,1 x 15 in



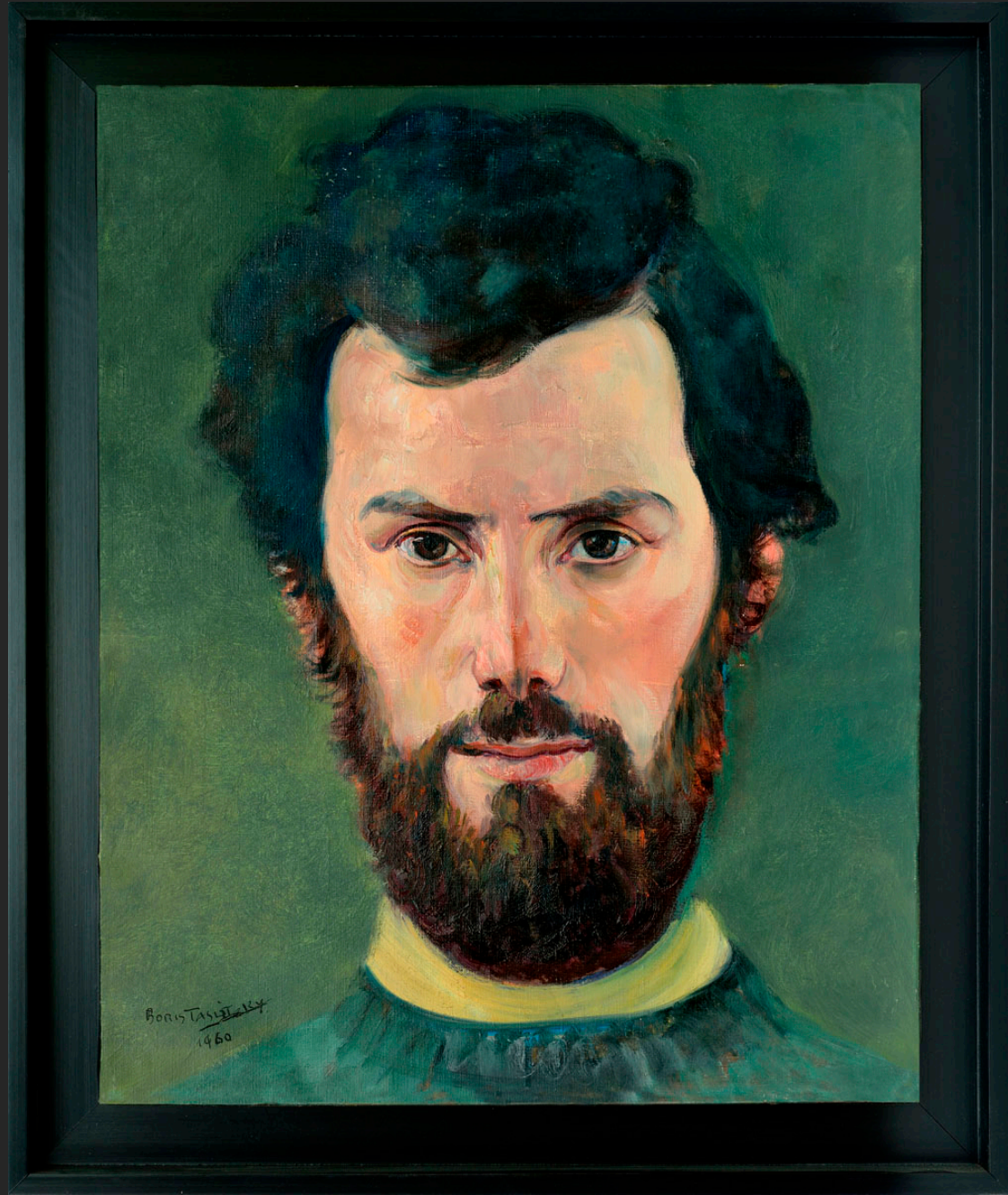
EVELYNE, 1959, oil on canvas, 25,6 x 20,5 in



SUZANNE, 1959, oil on canvas, 8,7 x 6,4 in



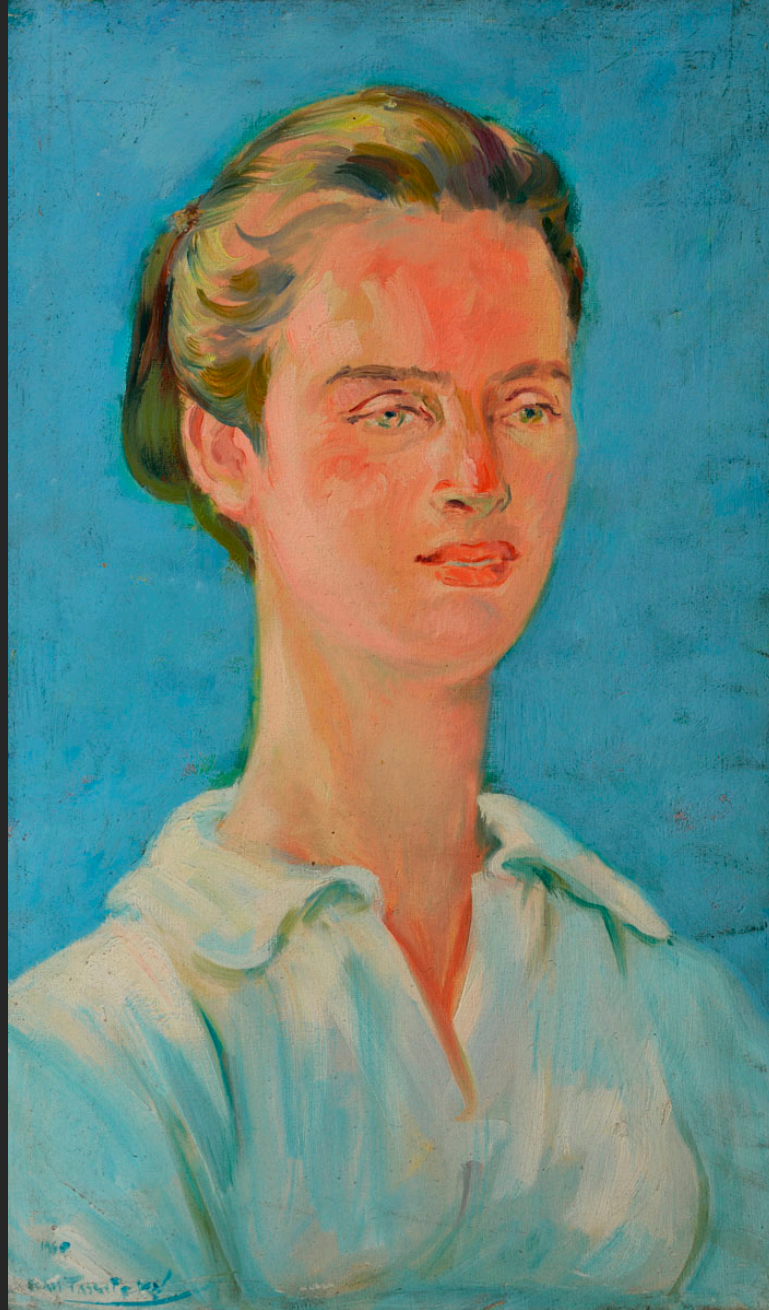
THE PUPPETEER JACQUES CHESNAIS, 1959, oil on canvas, 46,5 x 28,7 in



MAN WITH BEARD, 1960, oil on canvas, 16,1 x 13 in



YOUNG WOMAN WITH BUN ON GREEN BACKGROUND, 1960, oil on canvas, 18,1 x 10,6 in



SUZANNE, 1960, oil on canvas, 18,1 x 10,6 in



EVELYNE, 1960, oil on canvas, 18,1 x 15 in



SELF-PORTRAIT WITH SCARF, 1960, oil on canvas, 31,5 x 15,7 in



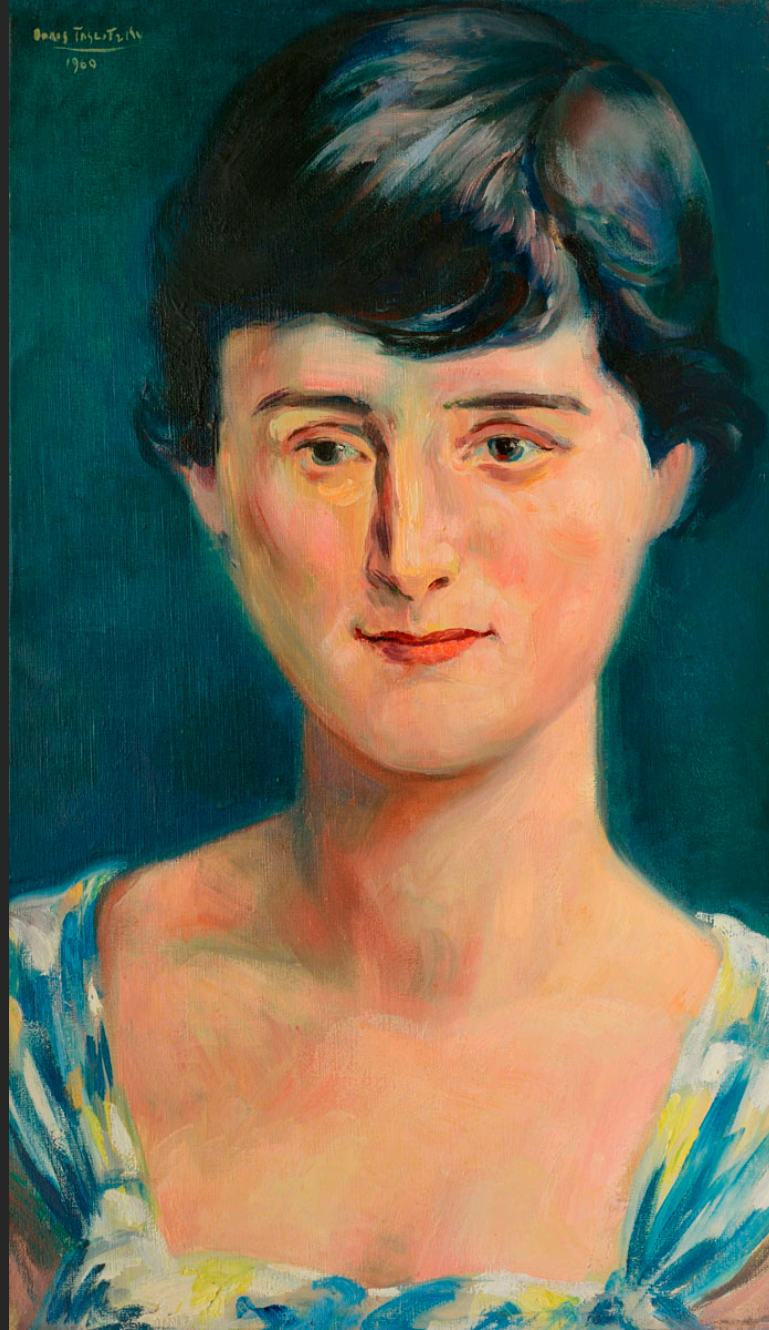
MARION MICHELLE, 1960, oil on canvas, 32,3 x 25,6 in



MAN WITH CAP (STUDY), 1960, oil on canvas, 8 x 7 in



SUZANNE SEWING, 1960, oil on canvas, 7 x 5,5 in



YOUNG BRUNETTE WITH SHORT HAIR, 1960, oil on canvas, 18,1 x 10,6 in



YOUNG BLOND GIRL WITH GREEN NECKLACE, 1960, oil on canvas, 8,7 x 6,3 in



PORTRAIT OF A READING MAN, 1960, oil on canvas, 18,1 x 10,6 in



SUZANNE SEWING, 1960, oil on canvas, 7 x 3,9 in



ROLAND BARTHES, 1961, oil on restored canvas, 24,2 x 18,1 in



SELF-PORTRAIT, 1961, oil on canvas, 7 x 3,9 in



PORTRAIT OF EVELYNE, 5th September 1961, oil on canvas, 23,6 x 18,5 in



YOUNG GIRL WITH RED COLLAR, 1961, oil on canvas, 24 x 15 in



SUZANNE IN A PINK DRESS, 1961, oil on canvas, 25,6 x 19,7 in



EVELYNE WITH TURBAN, 21st July 1961, oil on canvas, 21,7 x 18,1 in



SELF-PORTRAIT, 1962, oil on canvas, 21,7 x 15 in



EVELYNE WITH A CHECKED SHIRT, 20th August 1962, oil on canvas, 21,7 x 18,1 in



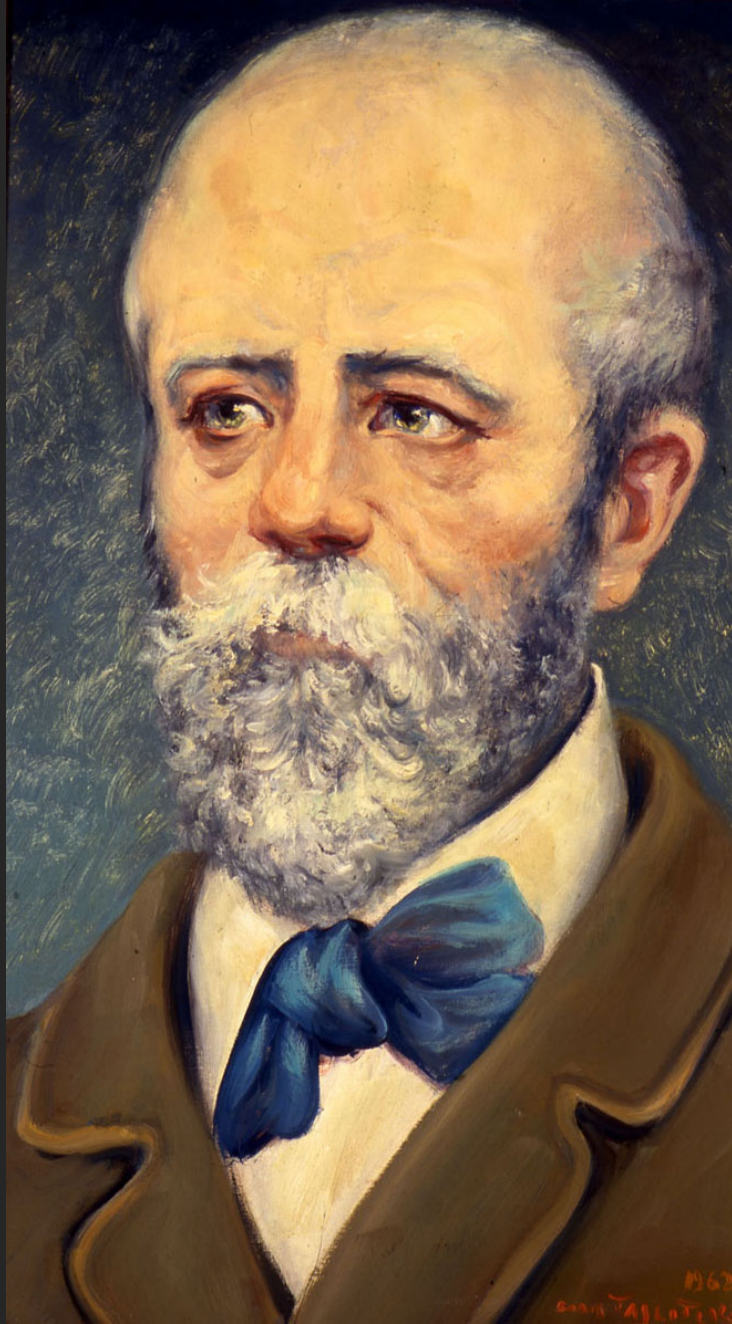
YOUNG WOMAN WITH RED SWEATER, 1962, oil on canvas, 24 x 15 in



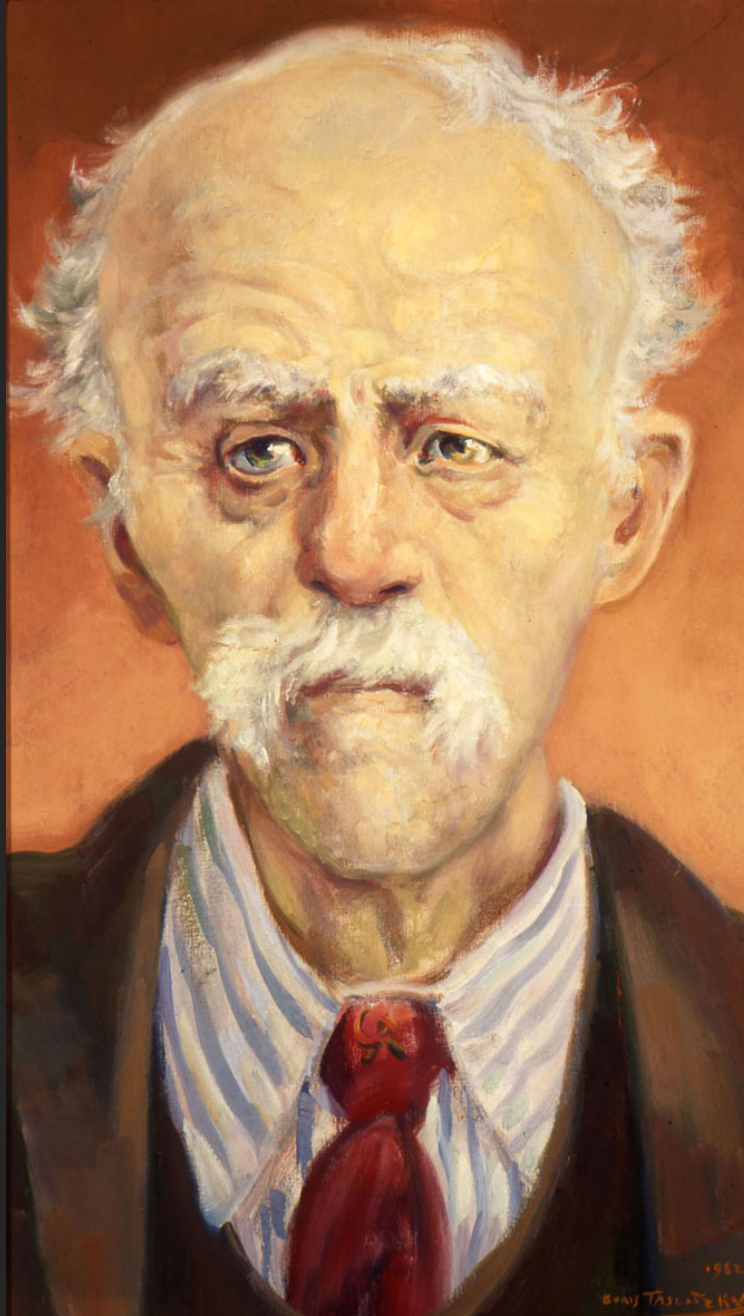
YOUNG GIRL IN YELLOW BY THE SEA, 1962, 21,7 x 18,1 in



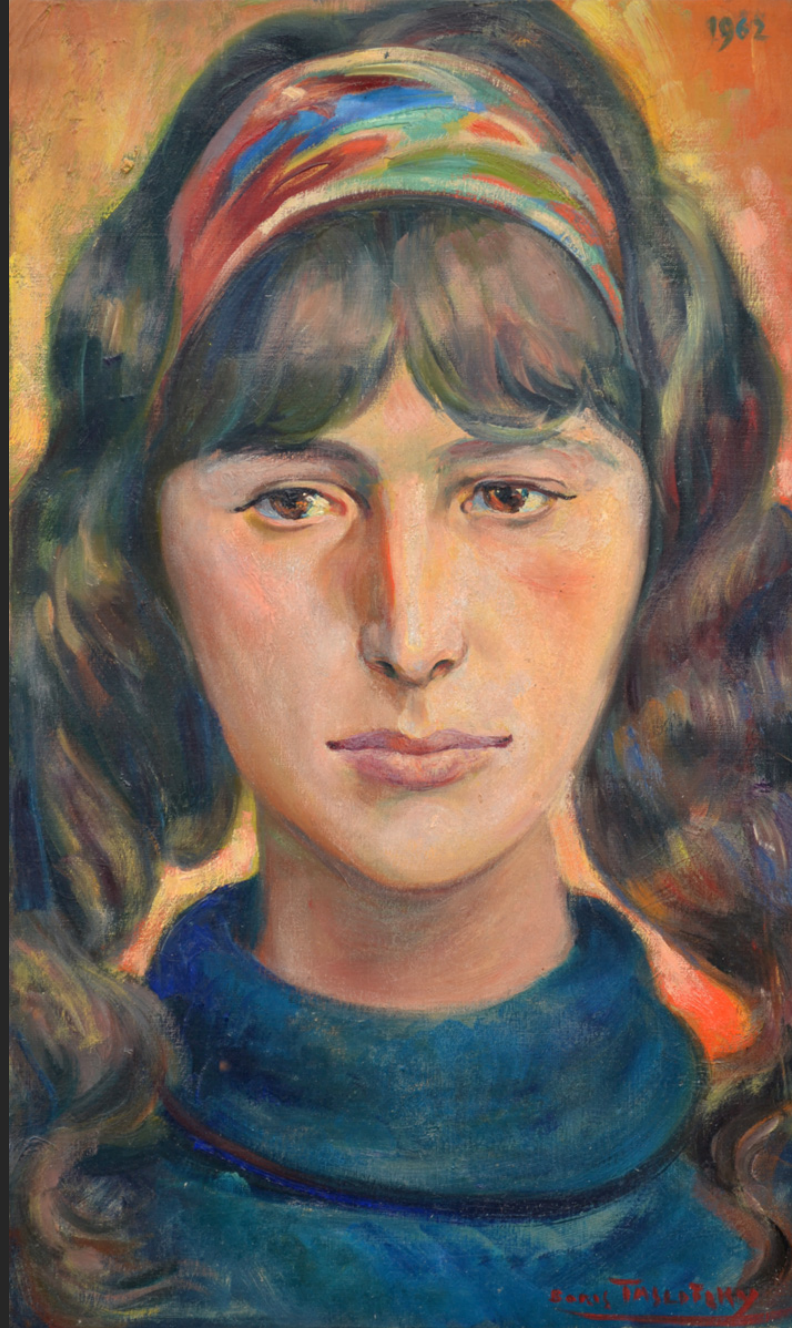
YOUNG MAN, 1962, oil on canvas, 28,7 x 23,6 in



PORTRAIT OF EUGENE POTTIER, 1962, oil on canvas, 18,1 x 10,6 in



PORTRAIT OF PIERRE DEGEYTER, 1962, oil on canvas, 18,1 x 10,6 in



PORTRAIT OF FRANCE CREMIEUX, 1962, oil on canvas, 18,1 x 10,6 in



MIREILLE BORIS, 1963, oil on canvas, 47,2 x 23,6 in