

Boris TASLITZKY

Gallery GENRE SCENES 2





NURSERY SCHOOL, 1971, oil on canvas, 13 x 16,5 in



PLAYGROUND, 1971, oil on canvas, 15 x 18,1 in



STUDY FOR THE PLAYGROUND II, 1971, oil on canvas, 21,3 x 31,5 in



CHILDREN, 1971, oil on canvas, 10,6 x 18,1 in



PLAYGROUND, 1971, oil on canvas, 19,7 x 24 in



PLAYGROUND, 1971, oil on canvas, 31,9 x 39,4 in



BALLGAME, 1971, oil on canvas, 15,7 x 31,5 in



PLAYGROUND, 1971, oil on canvas, 32,3 x 57,5 in



STUDY FOR A PLAYGROUND, 1971, oil on canvas, 18,1 x 21,7 in



YOUTH, (MODEL OF THE TAPESTRY), HONECOURT, MEURTHE ET MOSELLE, 1974, oil on cardboard, 11,6 x 25,6 in



FORWARD, 1980, oil on canvas board, 8 x 10 in



MAN STRIKING DOWN A GOAT, 1984, oil on cardboard, 6,7 x 9,3 in



MEN THROWING STONES, 1985, oil on canvas, 7,5 x 18,5 in



COUPLES IN LUXEMBOURG, 1986, oil on canvas, 11,8 x 35,4 in



COUPLE IN LUXEMBOURG I, 1986, oil on canvas, 5,5 x 7 in



COUPLE IN LUXEMBOURG II, 1986, oil on canvas, 5,5 x 7 in



ON THE BEACH, 1987, oil on cardboard



BEACH SCENE, 1987, oil on cardboard, 7,5 x 6,7 in



FIRECAMP, 1987, oil on cardboard, 8,3 x 10,6 in



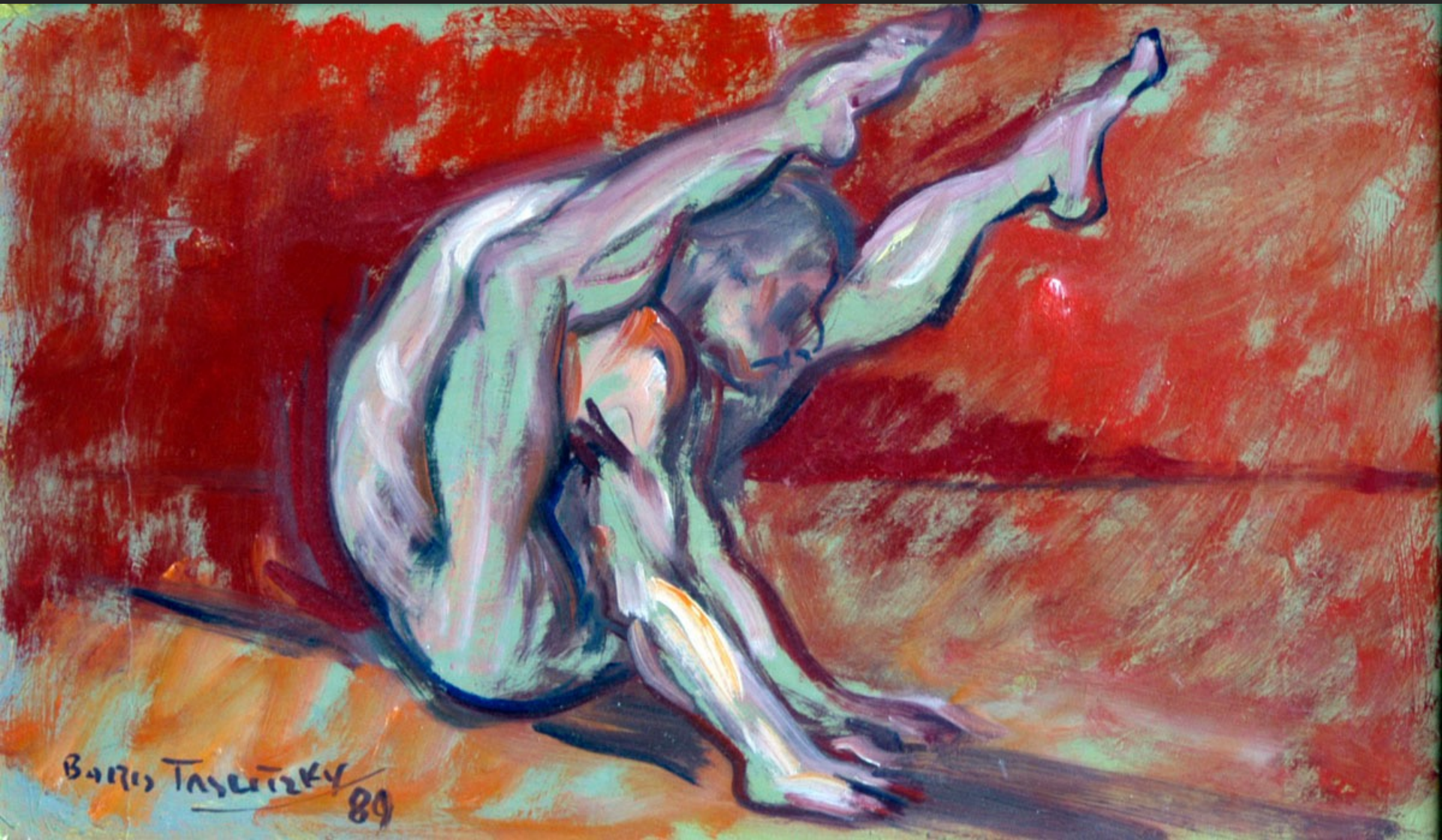
STUDY OF CHARACTERS ON THE BEACH, 1988, oil on canvas, 19,7 x 24 in



THE BEACH I, 1989, oil on canvas, 21,3 x 25,6 in



THE BEACH II, 1989, oil on canvas, 21,3 x 25,6 in



THE CONTORTIONIST, 1989, oil on cardboard, 6 x 10 in



THE DANCE, 1990, oil on canvas, 23,6 x 31,9 in



EVERYTHING IS GOING TO THE DOGS, 1991, oil on canvas, 13,8 x 27,6 in



FISHERMAN, 1993, oil on cardboard, 7,3 x 5,5 in



BRAWL, 1995, oil on canvas, 35 x 45,7 in



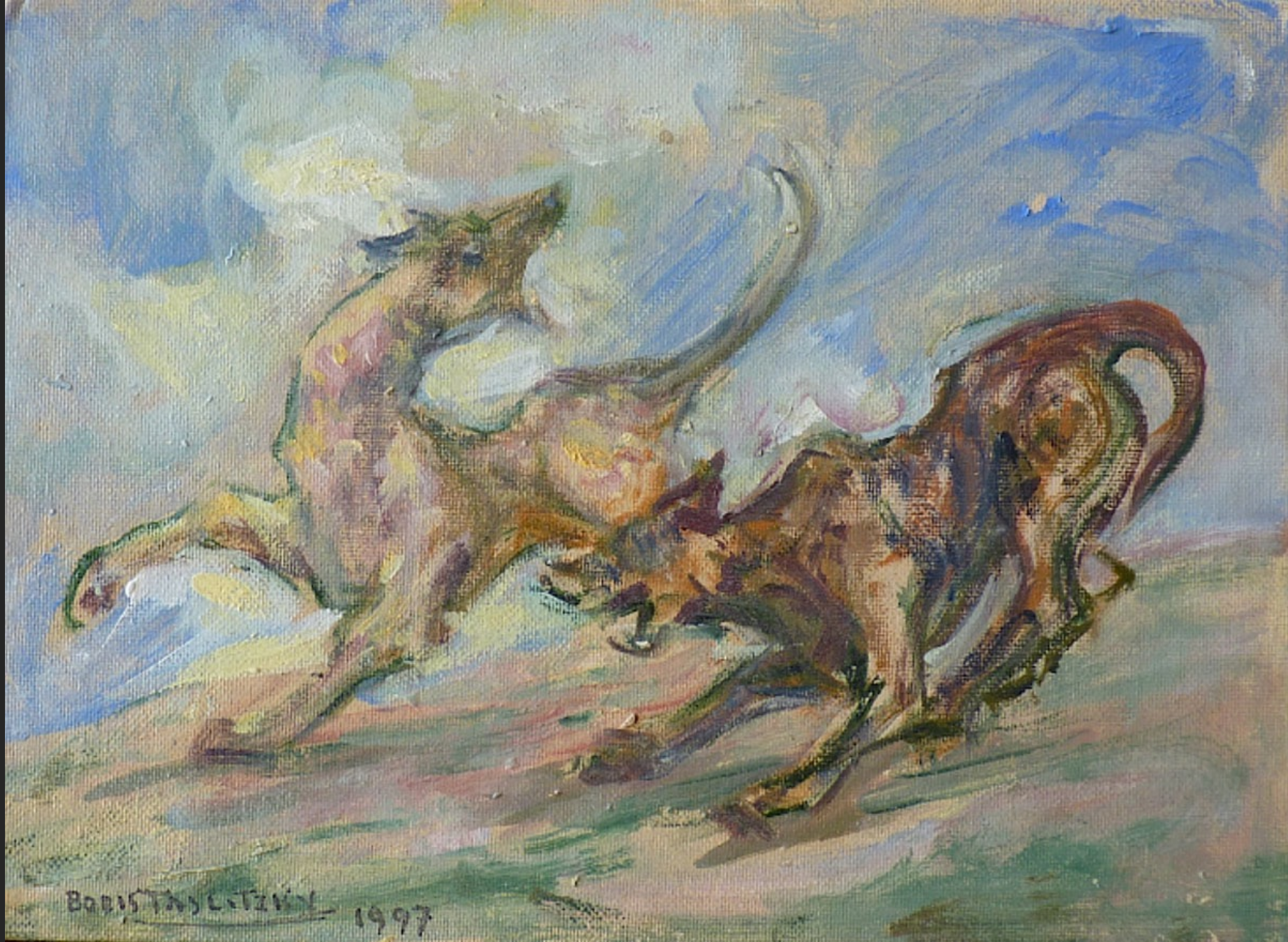
FIGHT I, 1995, oil on canvas, 31,9 x 25,6 in



FIGHT II, 1995, oil on canvas, 31,9 x 25,6 in



FIGHTERS, 1996, oil on canvas, 16,1 x 13 in



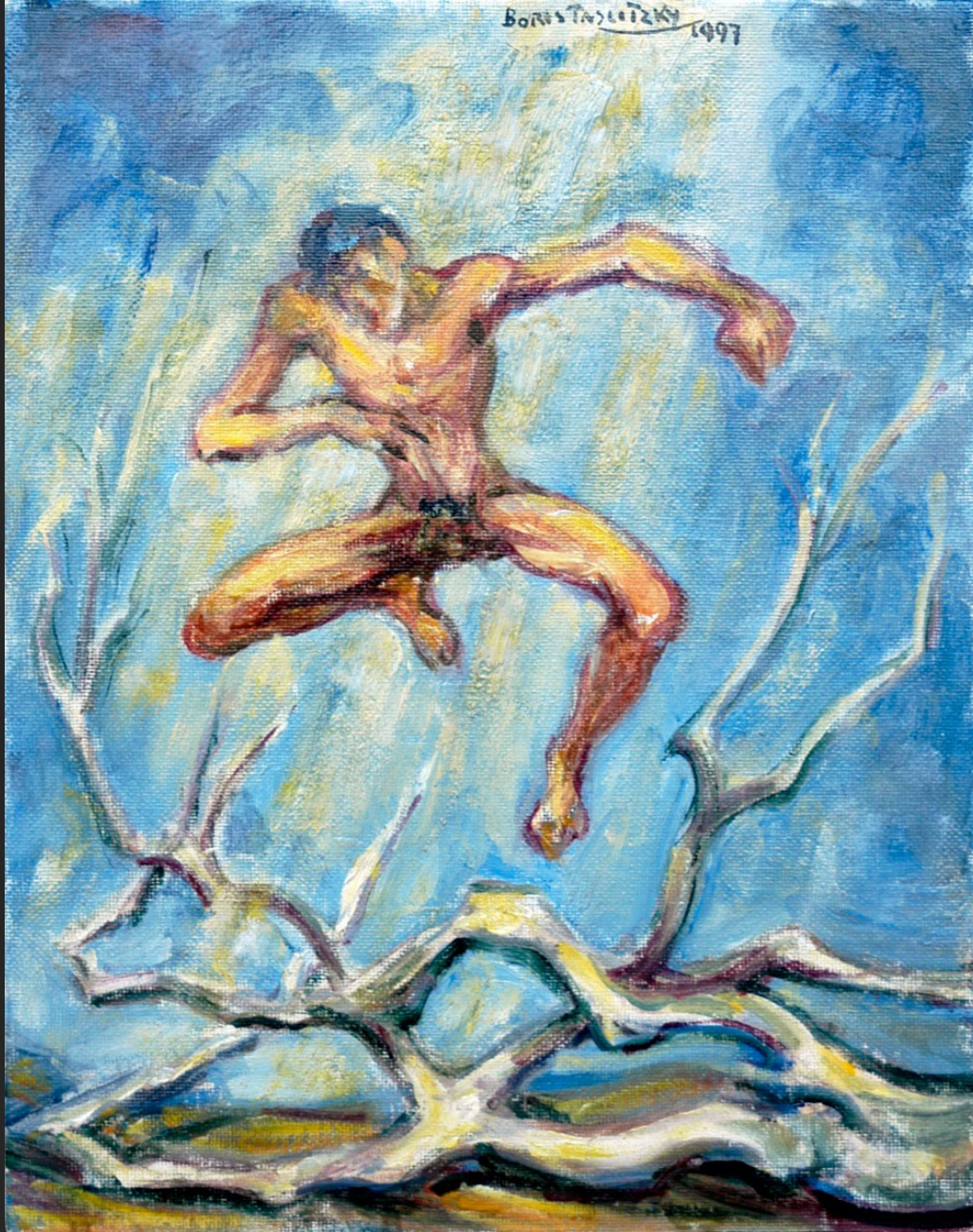
TWO DOGS, 1997, oil on canvas, 6,3 x 8,7 in



TWO FIGHTERS, 1997, oil on canvas board, 10,6 x 8,7 in



THE BRAWL, 1997, oil on canvas board, 18,1 x 21,7 in



JUMP, 1997, oil on canvas board, 9,4 x 7,5 in



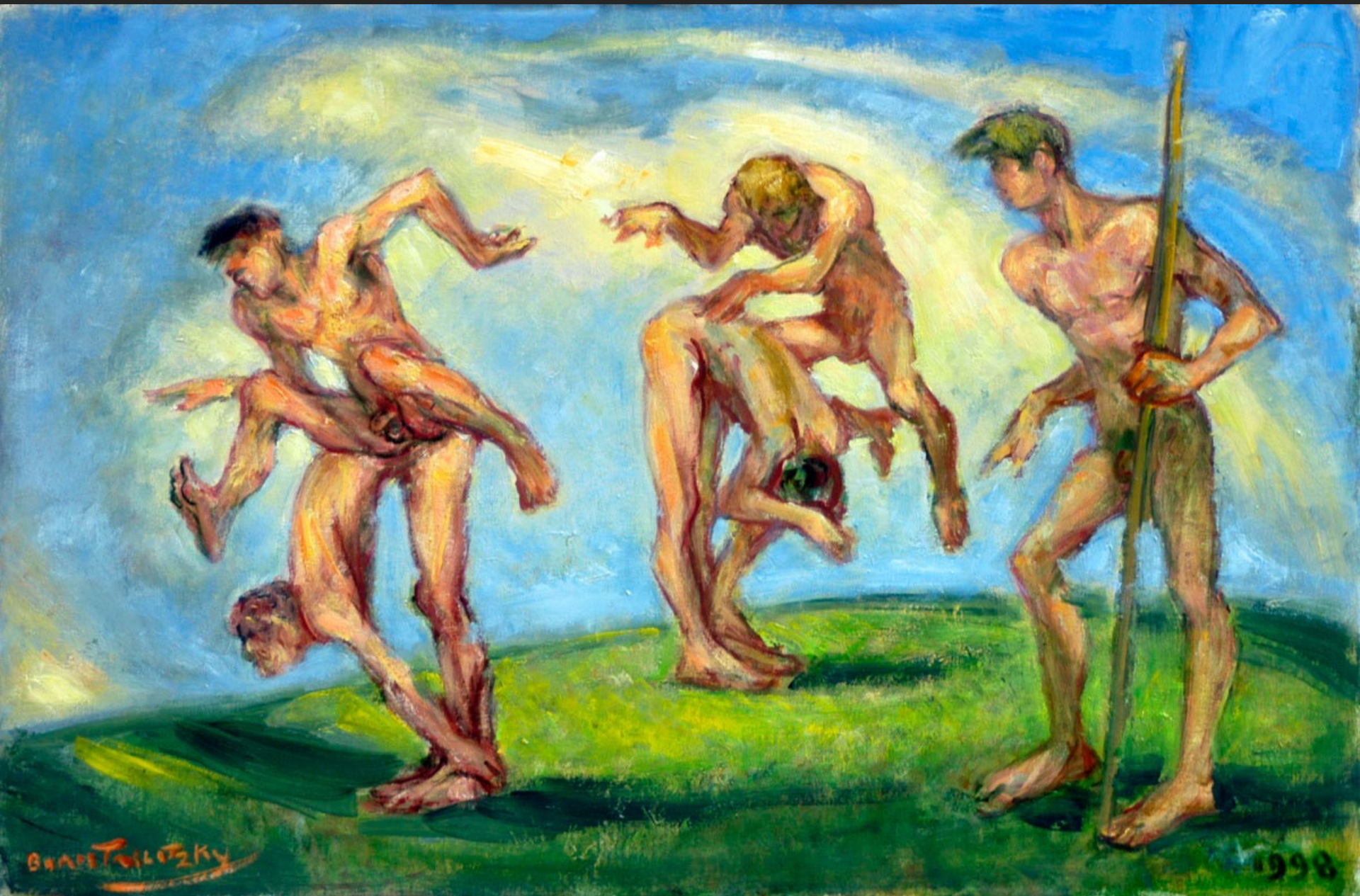
LEAPFROG, 1997, oil on canvas board, 9,4 x 7,5 in



THREE FIGHTERS, 1997, oil on canvas board, 10,6 x 8,7 in



THE FALL, 1998, oil on canvas board, 8,7 x 6,3 in



LEAPFROG, 1998, oil on canvas board, 15 x 21,7 in



DOGS RACE I, 2001, oil on canvas, 13,8 x 27,6 in



DOGS RACE II, 2001, oil on canvas, 10,6 x 13,8 in



TWO DOGS, 2001, oil on canvas, 7 x 6,3 in



FOUR DOGS AND TWO TREES, 2001, oil on canvas, 7 x 5,5 in



THE FALL, 2002, oil on canvas, 39,4 x 39,4 in



BRAWL, 2002, oil on canvas, 28,7 x 36,2 in



LUXEMBOURG, 2003, oil on canvas, 28 x 55,5 in