

Boris TASLITZKY

Gallery
TESTIMONIALS 2





STUDY FOR THE JUNE 1936 STRIKES (COMPOSITION), 1958, oil on canvas, 10,6 x 18,1 in



THE MEDICINE (WELCOMING TO JEANNE LÉVI TO THE MEDICINE FACULTY), 1959, oil on canvas, 20 x 44,9 in



MANIFESTATION OF YOUTH FOR PEACE, 1960, oil on canvas, 35,4 x 51,2 in



MANIFESTATION OF YOUTH FOR PEACE, 1960, oil on canvas, 51,2 x 63,8 in



THE GOOD SAMARITAN II, 1953-1961, oil on canvas, 51,2 x 63,8 in



THE GOOD SAMARITAN, 1960, oil on canvas, 90,6 x 100,4 in



THE SAMARITANS, 1961, oil on canvas, 15 x 18,1 in



DESPAIR, 1961, oil on canvas, 38,2 x 51,2 in



THE PIT-HEAD OF THE MINES, 1961-63, oil on canvas, 20,3 x 78,7 in



THE PIT-HEAD OF THE MINES, 1961-63, oil on canvas, 20,3 x 78,7 in detail 1



THE PIT-HEAD OF THE MINES, 1961-63, oil on canvas, 20,3 x 78,7 in detail 2



STUDY FOR BUCHENWALD INSURRECTION, 1963, oil on canvas, 10,6 x 18,1 in



FIGHTERS, 1963, oil on canvas, 19,7 x 24 in



THE BUCHENWALD INSURRECTION, 11th APRIL 1945, 1964, oil on canvas, 11,8 x 23,6 in



BUCHENWALD INSURRECTION, 11th APRIL 1945, 1964, oil on canvas, 14,6 x 10,6 in



BUCHENWALD INSURRECTION, 11th APRIL 1945, 1964, oil on canvas, 23,6 x 47,6 in



BUCHENWALD INSURRECTION, 11th APRIL 1945, 1964, oil on canvas, 31,9 x 63,4 in



BUCHENWALD INSURRECTION, 11th APRIL 1945, 1964, oil on canvas, 63,8 x 102,4 in



BUCHENWALD INSURRECTION, 11th APRIL 1945, 1964, oil on canvas, 20,9 x 25,2 in



BUCHENWALD INSURRECTION, 11th APRIL 1945, 1964, oil on canvas, 9,4 x 15,7 in



BUCHENWALD INSURRECTION, 11th APRIL 1945, 1963(64), oil on canvas, 24 x 14,9 in



TRANSPORT OF WOUNDED PERSONS IN THE MOUNTAIN, 1966, oil on canvas, 31,9 x 39,4 in



TRANSPORT OF A WOUNDED PERSON IN THE MOUNTAIN, 1966, oil on canvas, 51,2 x 38,2 in



TRANSPORT OF A WOUNDED PERSON IN THE MOUNTAIN, 1966, oil on canvas, 25,6 x 31,9 in



NAPALM, 1967, oil on canvas, 31,7 x 51,2 in



NAPALM, 1967, oil on canvas, 15 x 18,1 in



NAPALM, 1967, oil on canvas, 18,1 x 13 in



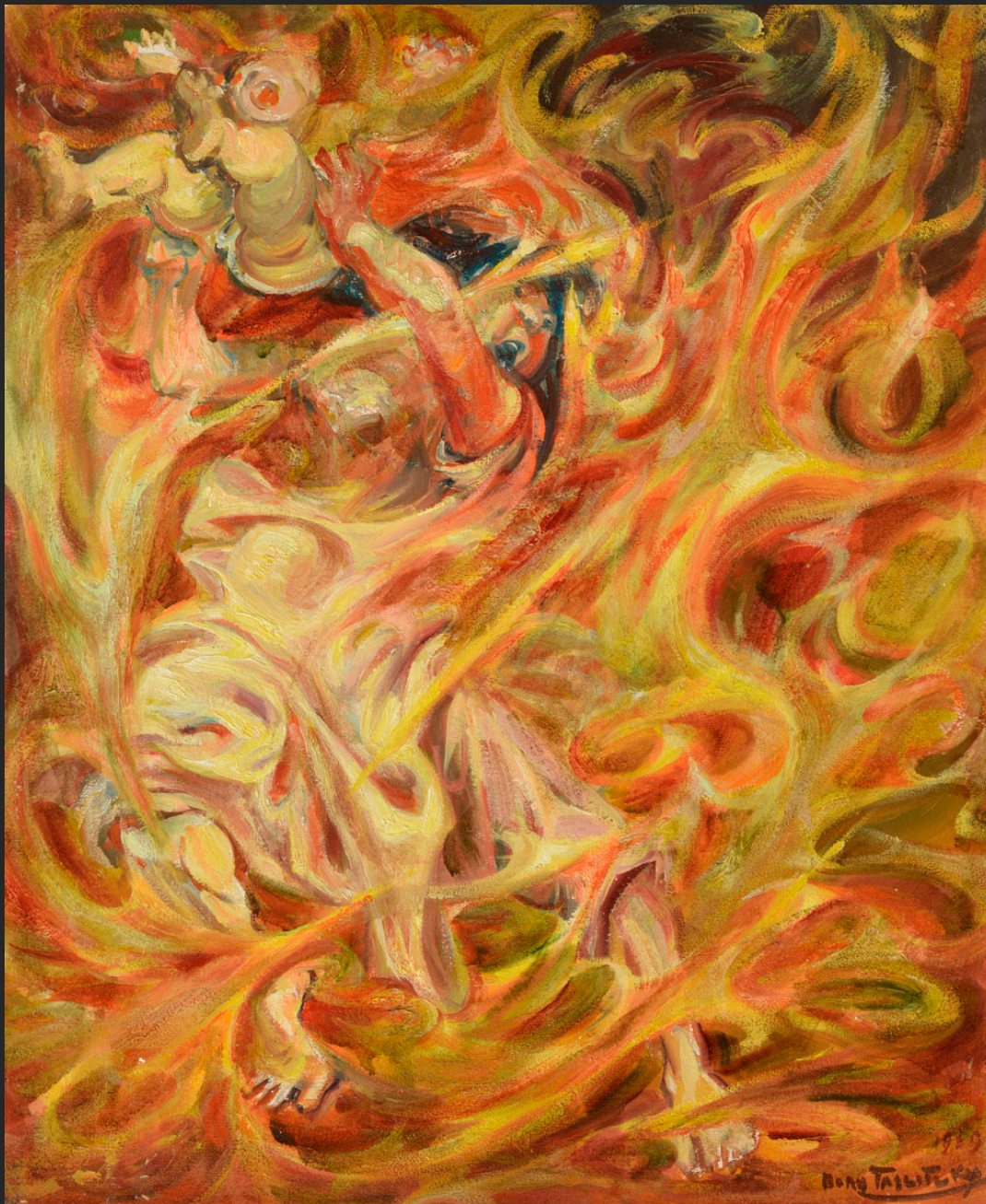
NAPALM, 1967, oil on canvas, 51,2 x 63,8 in



FIRING SQUAD VICTIM, 1968, oil on canvas, 18,1 x 21,7 in



STUDY FOR NAPALM, 1969, oil on cardboard, 13 x 16,1 in



NAPALM, 1969, oil on cardboard, 18,1 x 15 in



CHAOS, 1969, oil on canvas, 18,1 x 21,7 in



FIGHTS, 1969, oil on canvas, 23,6 x 28,7 in



NAPALM, 1969, oil on cardboard, 15 x 18,1 in



FOR ANGELA, 1971, oil on canvas, 63,8 x 51,2 in



CHILE, May 17th, 1975, oil on canvas, 15,4 x 18,1 in



CHILE, SEPTEMBER 1973, 1973, oil on canvas, 15,2 x 18,1 in



CHILE, 10th June 1974, oil on canvas, 15 x 18,3 in



CHILE, 1974, oil on canvas, 19,7 x 39,4 in



CHILE, 12th May 1975, oil on canvas, 15,4 x 18,1 in



CHILE, May 17th, 1975, oil on canvas, 15,4 x 18,1 in



STUDY FOR THE SAMARITANS, 1975, oil on canvas, 28,7 x 23,6 in



CHILE, 1976, oil on canvas, 38,2 x 63,8 in



CHILE, 1976, oil on canvas, 38,6 x 57 in



THE PRISONER, HENRI MARTIN, 1980, oil on canvas, 21,7 x 18,1 in



NAPALM, 1980, oil on cardboard, 8,7 x 10,6 in



STUDY FOR EARTHQUAKE, 1981, oil on cardboard, 25,6 x 31,9 in



STUDY 1 FOR FIRE, 1981, oil on canvas, 13,8 x 10,6 in



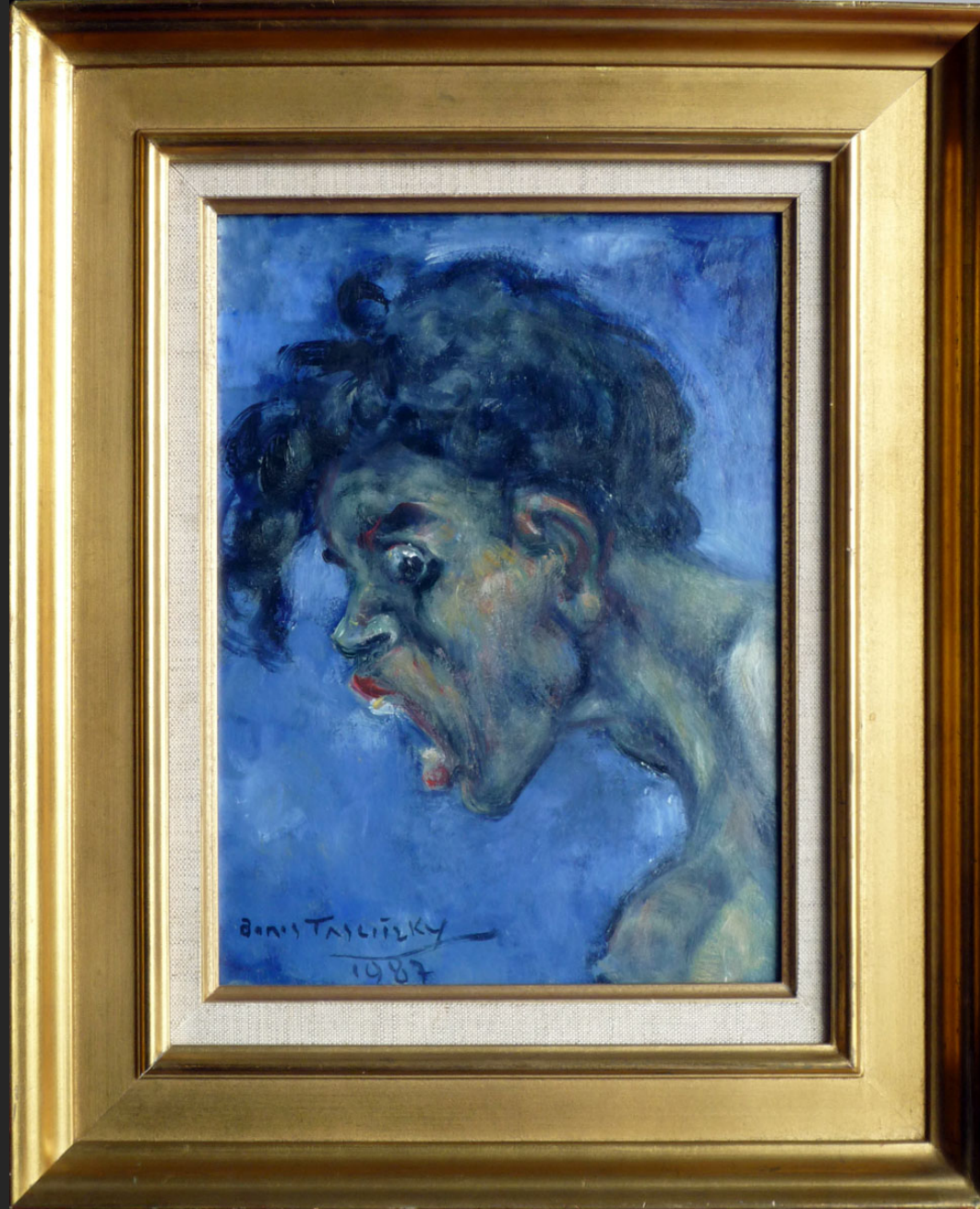
STUDY 2 FOR FIRE, 1981, oil on canvas, 13,8 x 10,6 in



FIRE, 1981, oil on canvas, 38,2 x 76,8 in



PILE OF CORPSES (MASS GRAVE), 1982, oil on canvas, 76,8 x 51,2 in



SCREAMING WOMAN ON A BLUE BACKGROUND, 1982, oil on cardboard, 10,2 x 7,5 in



FIRE, 1985, oil on canvas, 51,2 x 76,8 in



EARTHQUAKE, 10th July 1985, oil on cardboard, 10,6 x 18,1 in



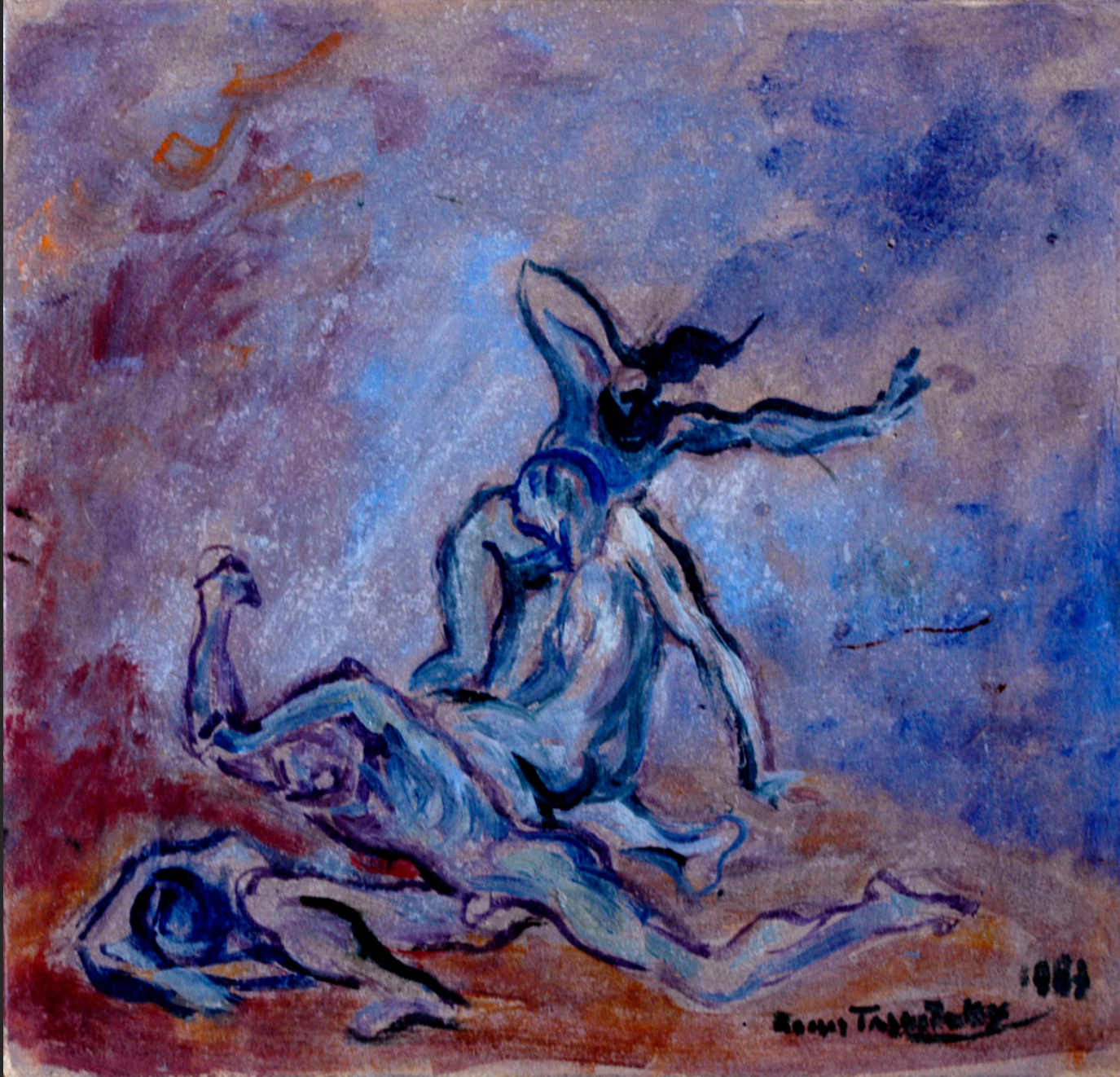
THE EXODUS, 1986, oil on canvas, 23,6 x 36,2 in



THE EXODUS, 30th June 1986, oil on canvas, 34,3 x 76,8 in



THE EXODUS (STUDY), 1986, oil on canvas, 31,9 x 51,2 in



CORPS, 1987, oil on cardboard, 7 x 7 in



APARTHEID, 1987, oil on canvas, 19,7 x 25,6 in



APARTHEID III, 1987, oil on canvas, 31,9 x 39,4 in



APARTHEID II, 1988, oil on canvas, 57,5 x 44,9 in



STUDY FOR REPRESSION, 1987, oil on canvas, 21,3 x 25,6 in



THE WHIP, 1987, oil on cardboard, 7,5 x 10,6 in



THE WHIP, 1987, oil on canvas, 11,8 x 49,2 in



APARTHEID, 1989, oil on cardboard, 8,3 x 28,5 in



SKETCH FOR THE BUCHENWALD INSURRECTION OF THE 11th APRIL 1945, 1989, oil on canvas, 15,4 x 31,2 in



THE BUCHENWALD INSURRECTION OF THE 11th APRIL 1945, 1990, oil on canvas, 31,9 x 51,2 in



EVERYTHING IS GOING TO THE DOGS (STUDY), 1990, oil on canvas, 28,7 x 36,2 in



EVERYTHING IS GOING TO THE DOGS (STUDY), 1990, oil on canvas, 31,9 x 39,8 in



EVERYTHING IS GOING TO THE DOGS, 1990, oil on canvas, 16,1 x 10,6 in



EVERYTHING IS GOING TO THE DOGS, 1991, oil on canvas, 18,1 x 15 in



EVERYTHING IS GOING TO THE DOGS I, 1991, oil on canvas, 18,1 x 15 in



EVERYTHING IS GOING TO THE DOGS II, 1991, oil on canvas, 18 x 15 in



EVERYTHING IS GOING TO THE DOGS III, 1991, oil on canvas, 18 x 15 in



EVERYTHING IS GOING TO THE DOGS, 1991, oil on canvas, 9,8 x 19,7 in



EVERYTHING IS GOING TO THE DOGS, 1991, oil on canvas, 13,8 x 27,6 in



Boris Tshitsky
1991

EVERYTHING IS GOING TO THE DOGS, 1991, oil on canvas, 35 x 45,7 in



THE RUN, 1995, oil on cardboard, 19,7 x 27,6 in



ATTACK, 1994, oil on canvas board, 27,6 x 19,7 in



SARAJEVO, 1994, oil on canvas, 57,5 x 35 in



EVERYTHING IS GOING TO THE DOGS, 1995, oil on canvas board, 10,7 x 13,8 in



ZAÏRE, 1997, oil on canvas board, 7,5 x 9,4 in



ZAÏRE, 1997, oil on canvas board, 8,7 x 10,7 in



ZAÏRE, 1997, oil on canvas board, 8,7 x 10,7 in



ZAIRE, 1997, oil on canvas, 35,4 x 45,7 in



THE FALL, 1999, oil on canvas, 18,1 x 15 in



THE FALL, 1999, oil on canvas, diptyque 2 x (21,3 x 25,6 in)



THE FALL, 1999, oil on canvas, diamètre 47,2 in